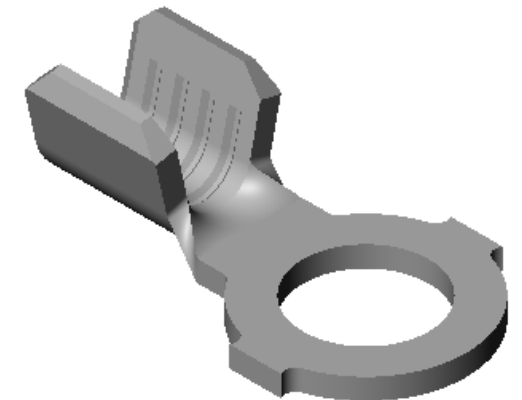
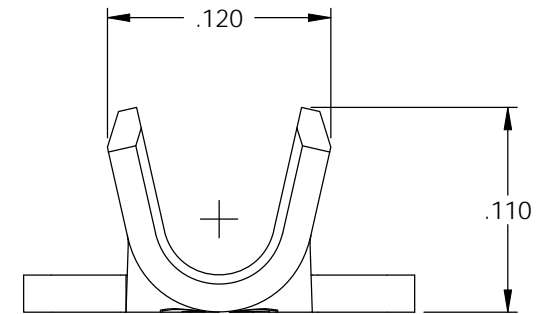
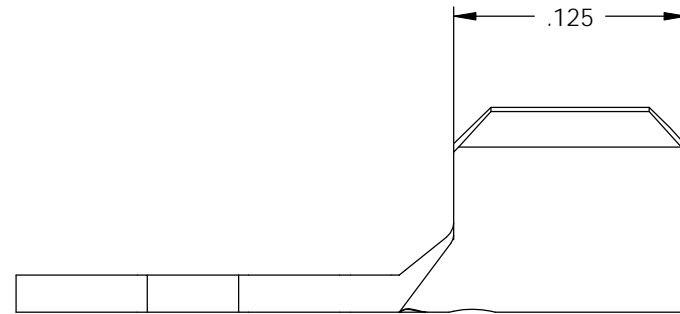
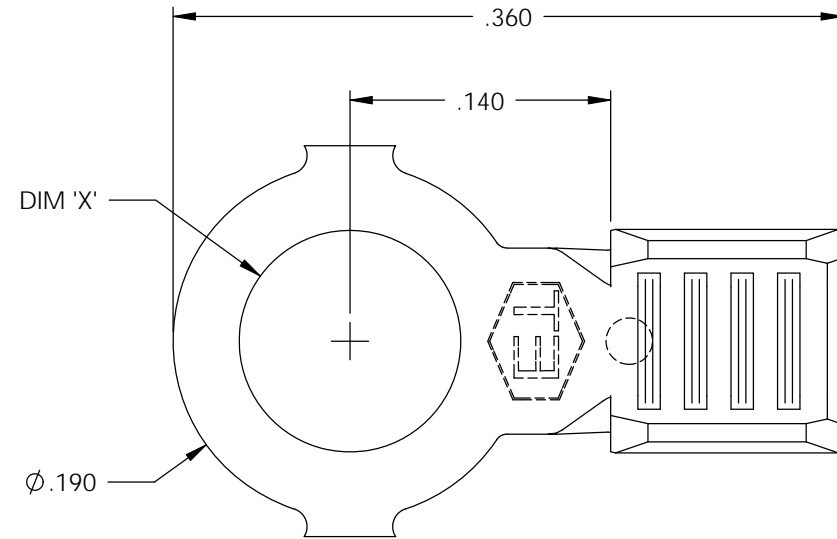


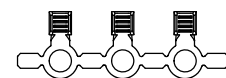
NOTE:

- 1.) MAT'L: .020 THK., BRASS, #2 TEMPER (HALF HARD), PER ETCO METAL CODE NO. 00245.
- 2.) MAT'L: .020 THK., PRE-TINNED BRASS, #2 TEMPER (HALF HARD), PER ETCO METAL CODE NO. 01310.
- 3.) MAT'L: .020 THK., PRE-NICKEL PLATED STEEL, #3 TEMPER (QUARTER HARD), PER ETCO METAL CODE NO. 03180.
- 4.) PARTS MAY BE COATED WITH A LIGHT FILM OF LUBRICATION USED IN THE MANUFACTURING PROCESS.
- 5.) WIRE RANGE: 22-18 AWG.

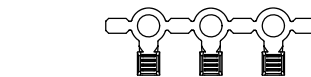
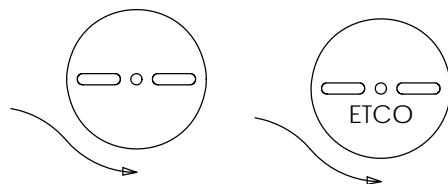


Rev.	Description of Change/ SCN#	Date
1	REDRAWN ON SOLIDWORKS NO CHANGES SCJ ORG.ENG.DWG.DATE: 10-17-91	11-22-02
2	ADDED P/Cs SCN#140162 SCJ	7-31-07

P/C	DESCRIPTION	DIM 'X'	MAT'L	UL	SP
00265	R19-066-HB	Ø.066	NOTE 1		
00267	R19-066-THB	Ø.066	NOTE 2		
00270	R19-2-HB	Ø.093	NOTE 1	X	X
00280	R19-2-THB	Ø.093	NOTE 2	X	X
00285	R19-2-NPS	Ø.093	NOTE 3		
00290	R19-4-HB	Ø.119	NOTE 1	X	X
00300	R19-4-THB	Ø.119	NOTE 2	X	X
00302	R19-132-HB	Ø.132	NOTE 1	X	X
00305	R19-4-NPS	Ø.119	NOTE 3		



DIRECTION EXITING TOOL,
EARS UP, TO THE BACK



DIRECTION TOWARD APPLICATOR,
EARS UP, TO THE FRONT

UNCONTROLLED COPY

<p>THIRD ANGLE PROJECTION TOLERANCES UNLESS OTHERWISE SPECIFIED INCHES: .XX - ±.030 .XXX - ±.015 ANGLES: ±5°</p>	<p>TOOL NO.</p> <p>0008</p>	<p>Title: RING TERMINAL</p>		
		<p>DO NOT SCALE DWG.</p> <p>Drawn By: S.JOHNSON</p> <p>Chk'd/App'd By:</p> <p>Dwg. No.: R19 cust</p>	<p>Date: 11-22-02</p> <p>Scale: 10X</p> <p>Size: B</p>	<p>ETCO Incorporated Engineered Products 25 Bellows Street Warwick, RI 02888 Phone: (401) 467-2400 Fax: (401) 467-9230 www.ETCO.com</p>