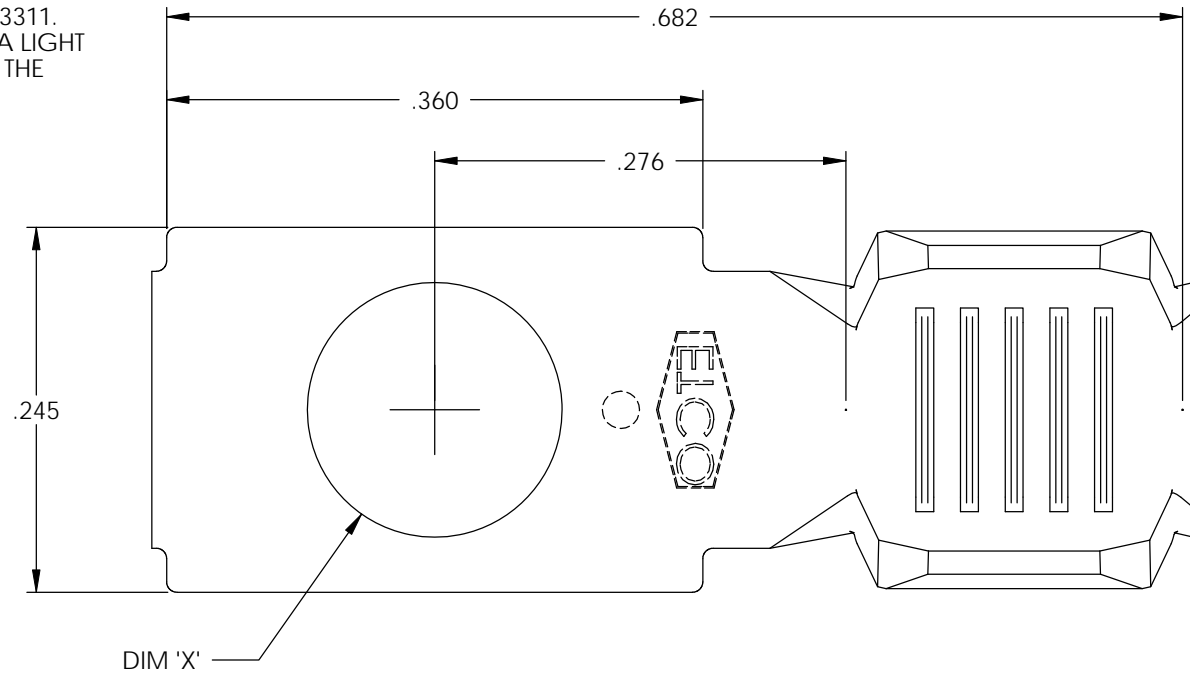
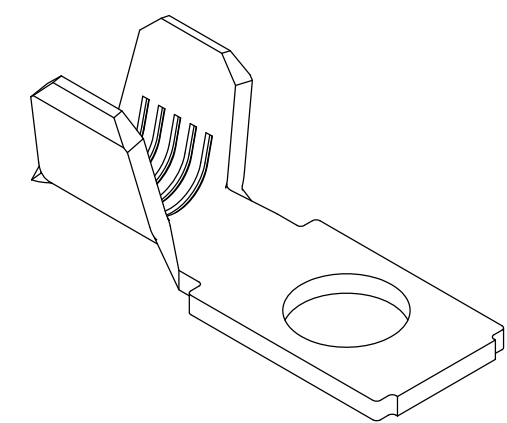
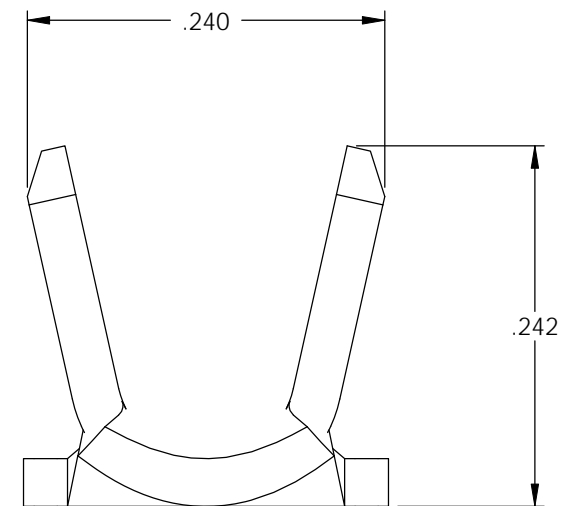
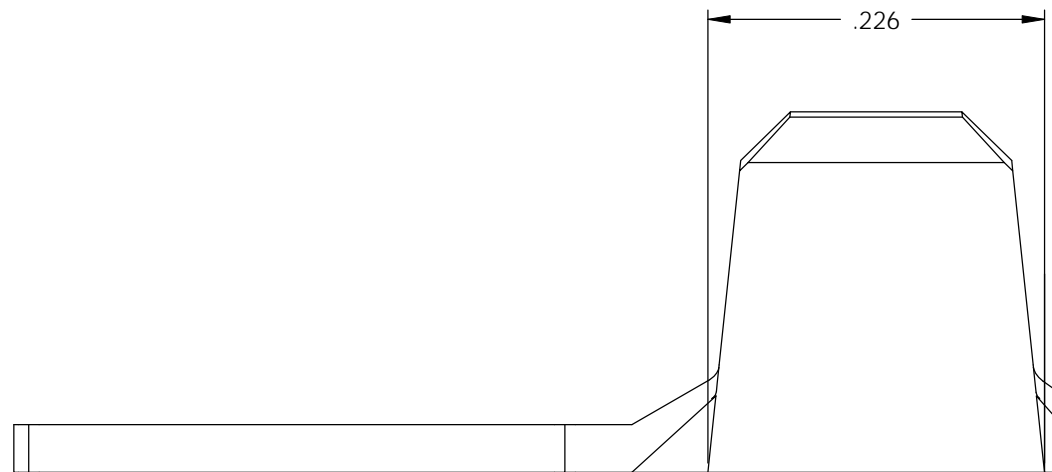


NOTE:

- 1.) MAT'L: .032 THK., BRASS, #2 TEMPER (HALF HARD), PER ETCO METAL CODE NO. 00762.
- 2.) MAT'L: .032 THK., PRE-TINNED BRASS, #2 TEMPER (HALF HARD), PER ETCO METAL CODE NO. 01722.
- 3.) MAT'L: .032 THK., NICKEL PLATED STEEL, #2 TEMPER (HALF HARD), PER ETCO METAL CODE NO. 03311.
- 4.) PARTS MAY BE COATED WITH A LIGHT FILM OF LUBRICATION USED IN THE MANUFACTURING PROCESS.
- 5.) WIRE RANGE: 12-10 AWG.

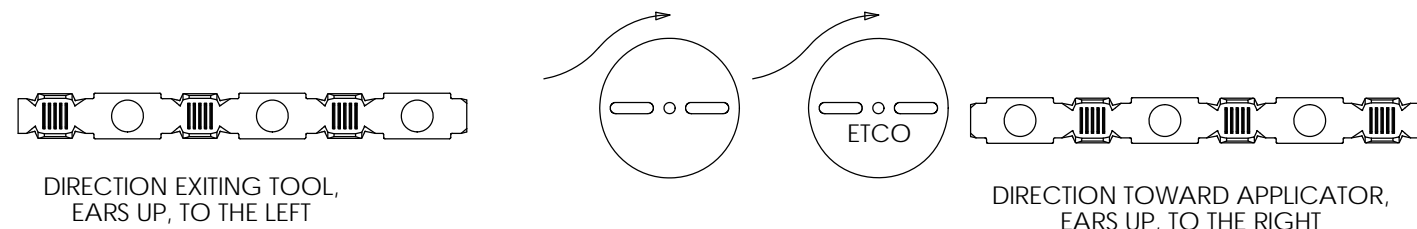


DIM 'X'



P/C	DESCRIPTION	DIM 'X'	MAT'L	UL	CSA
01839	R195E-2-THB	Ø.093	NOTE 2		
01851	R195E-4-HB	Ø.119	NOTE 1	X	X
01852	R195E-6-HB	Ø.145	NOTE 1	X	X
01853	R195E-8-HB	Ø.171	NOTE 1	X	X
01854	R195E-8-THB	Ø.171	NOTE 2	X	X
01874	R195E-4-THB	Ø.119	NOTE 2	X	X
01875	R195E-6-THB	Ø.145	NOTE 2	X	X
01891	R195E-6-NPS	Ø.145	NOTE 3		

Rev.	Description of Change/ SCN#	Date
1	REDRAWN ON SOLIDWORKS NO CHANGES SCJ ORG.ENG.DWG.DATE: 1-20-81	3-18-03
2	ADDED P/Cs SCN# 140162 SCJ	9-20-07



DIRECTION EXITING TOOL,  
EARS UP, TO THE LEFT

DIRECTION TOWARD APPLICATOR,  
EARS UP, TO THE RIGHT

THIS PRINT IS THE PROPERTY OF ETCO INCORPORATED. NO PART OF THIS DESIGN MAY BE USED IN ANY WAY WITHOUT WRITTEN CONSENT FROM ETCO INCORPORATED.

# UNCONTROLLED COPY

<p>THIRD ANGLE PROJECTION TOLERANCES UNLESS OTHERWISE SPECIFIED INCHES: .XX - ±.030 .XXX - ±.015 ANGLES: ±5°</p>	<p>TOOL NO. <b>0735</b></p>	<p>Title: <b>RING TERMINAL</b></p>		
		<p>DO NOT SCALE DWG.</p>	<p>Drawn By: S.JOHNSON</p>	<p>Date: 3-18-03</p>
<p>ETCO Incorporated Engineered Products 25 Bellows Street Warwick, RI 02888 Phone: (401) 467-2400 Fax: (401) 467-9230 www.ETCO.com</p>		<p>Chk'd/App'd By:</p>	<p>Scale: 8X</p>	<p>Size B</p>
		<p>Dwg. No.: <b>R195E cust</b></p>		