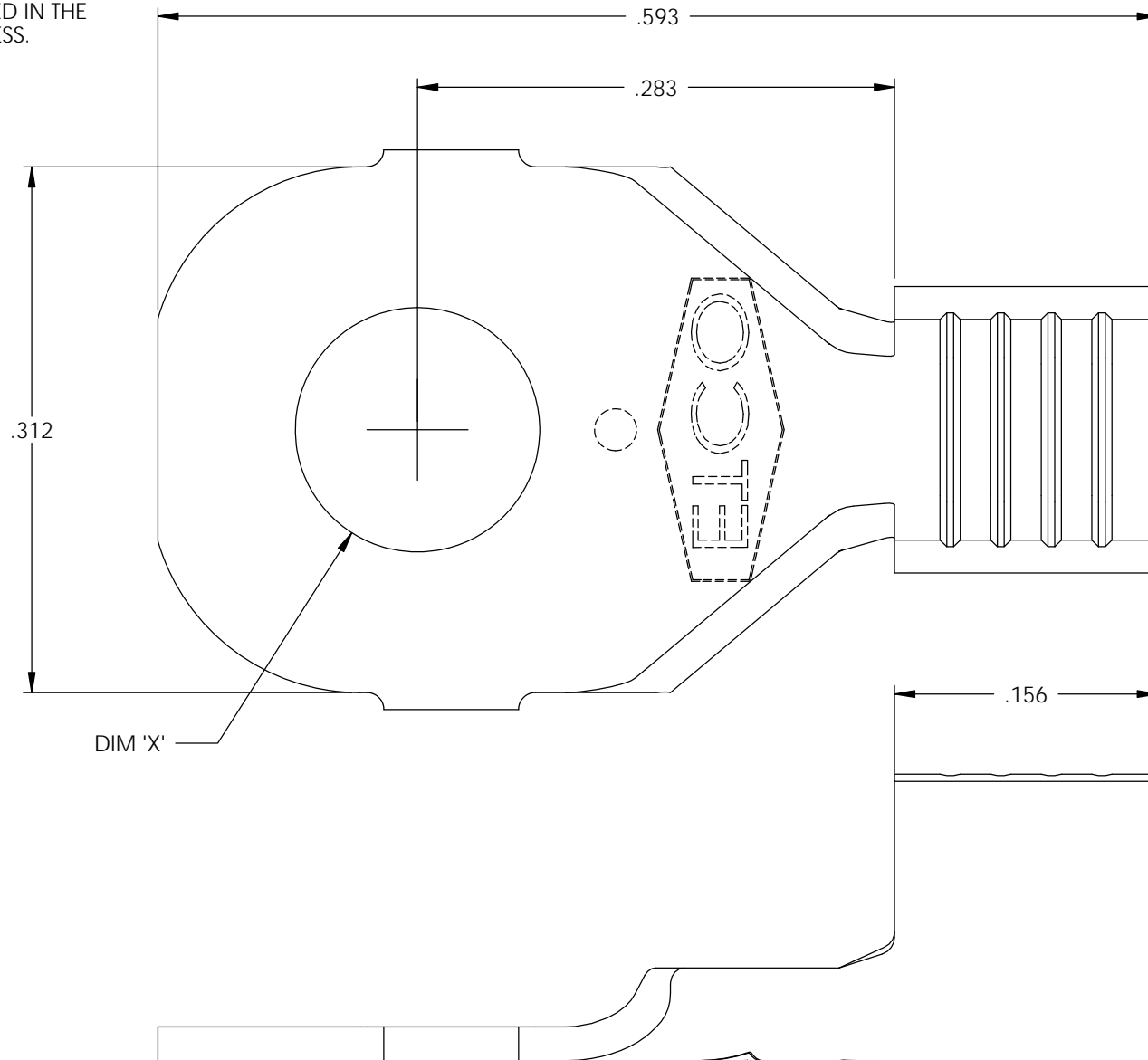


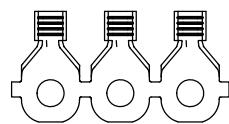
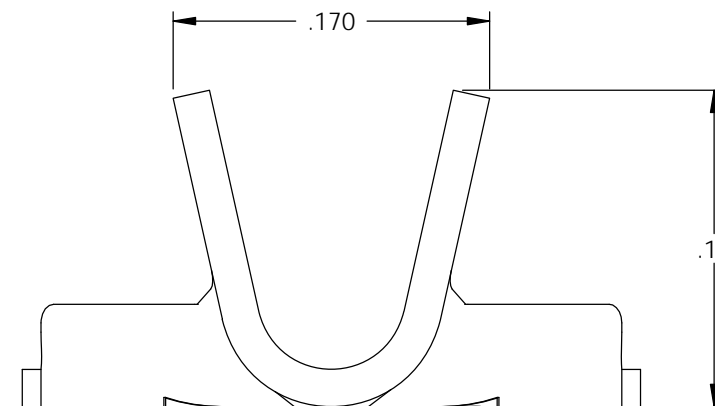
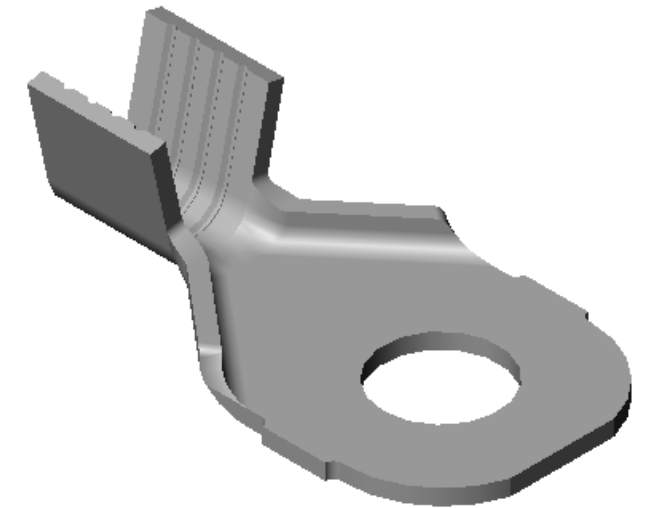
NOTE :

- 1.) MAT'L: .020 THK., BRASS, #2 TEMPER (HALF HARD), PER ETCO METAL CODE NO. 00310.
- 2.) MAT'L: .020 THK., PRE-TINNED BRASS, #2 TEMPER (HALF HARD), PER ETCO METAL CODE NO. 01390.
- 3.) PARTS MAY BE COATED WITH A LIGHT FILM OF LUBRICATION USED IN THE MANUFACTURING PROCESS.
- 4.) WIRE RANGE: 18-14 AWG.

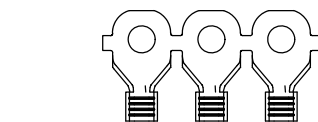
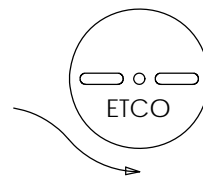
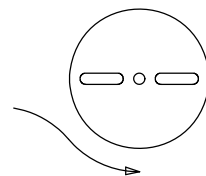


P/C	DESCRIPTION	DIM 'X'	MAT'L	UL	SP
01837	R210-4-HB	Ø.119	NOTE 1	X	X
01838	R210-6-HB	Ø.145	NOTE 1	X	X
01880	R210-4-THB	Ø.119	NOTE 2	X	X
01900	R210-6-THB	Ø.145	NOTE 2	X	X
01910	R210-8-HB	Ø.171	NOTE 1	X	X
01920	R210-8-THB	Ø.171	NOTE 2	X	X
01930	R210-10-HB	Ø.197	NOTE 1	X	X
01940	R210-10-THB	Ø.197	NOTE 2	X	X

Rev.	Description of Change/ SCN#	Date
1	SCN# 102104 SCJ ORG.ENG.DWG.DATE: 3-5-93	1-13-03
2	ADDED P/Cs SCN#140162 SCJ	8-29-07



DIRECTION EXITING TOOL,  
EARS UP, TO THE BACK



DIRECTION TOWARD APPLICATOR,  
EARS UP, TO THE FRONT

THIS PRINT IS THE PROPERTY OF ETCO INCORPORATED. NO PART OF THIS DESIGN MAY BE USED IN ANY WAY WITHOUT WRITTEN CONSENT FROM ETCO INCORPORATED.

# UNCONTROLLED COPY

<p>THIRD ANGLE PROJECTION TOLERANCES UNLESS OTHERWISE SPECIFIED INCHES: .XX - ±.030 .XXX - ±.015 ANGLES: ±5°</p>	<p>TOOL NO. <b>0634</b></p>	<p>Title: <b>RING TERMINAL</b></p>		
		<p>DO NOT SCALE DWG.</p>	<p>Drawn By: S.JOHNSON</p>	<p>Date: 1-13-03</p>
<p>ETCO Incorporated Engineered Products 25 Bellows Street Warwick, RI 02888 Phone: (401) 467-2400 Fax: (401) 467-9230 www.ETCO.com</p>		<p>Chk'd/App'd By:</p>	<p>Scale: 10X</p>	<p>Size <b>B</b></p>
		<p>Dwg. No.: <b>R210 cust</b></p>		