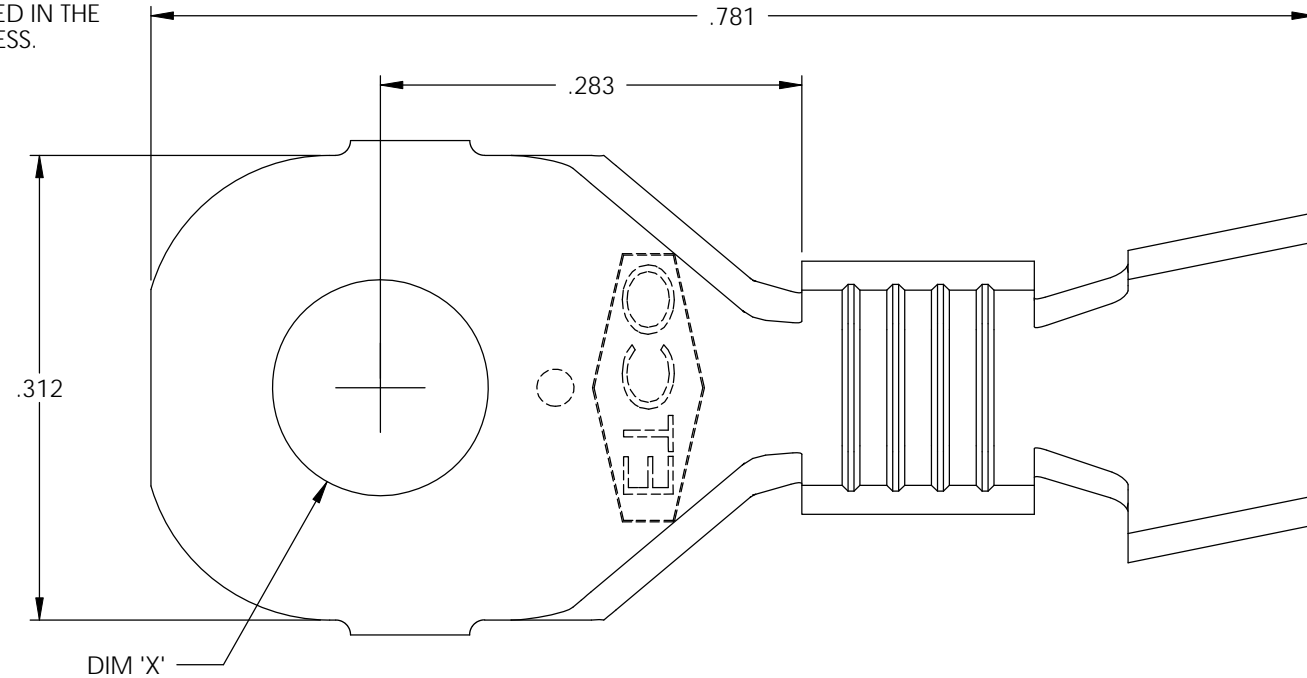
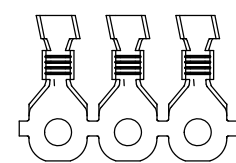
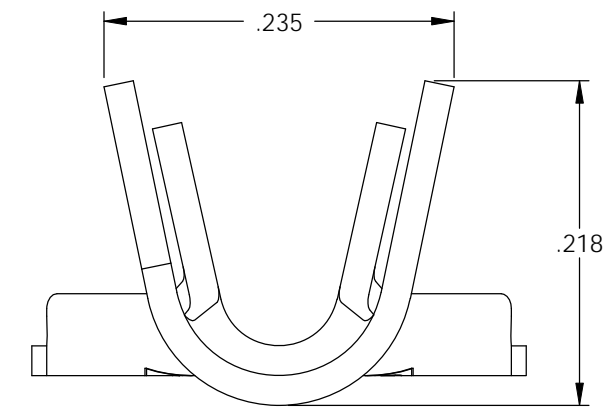
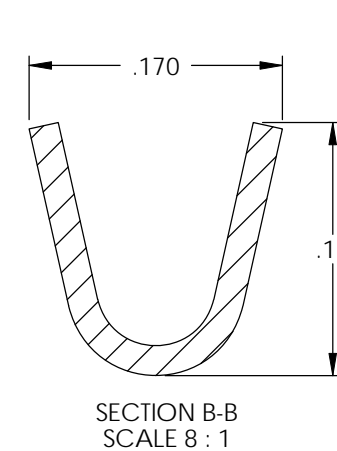
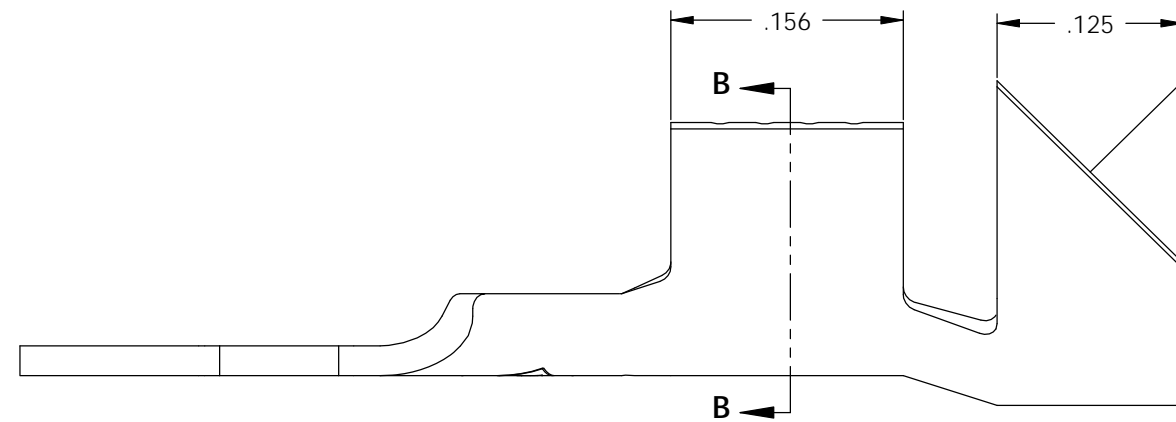
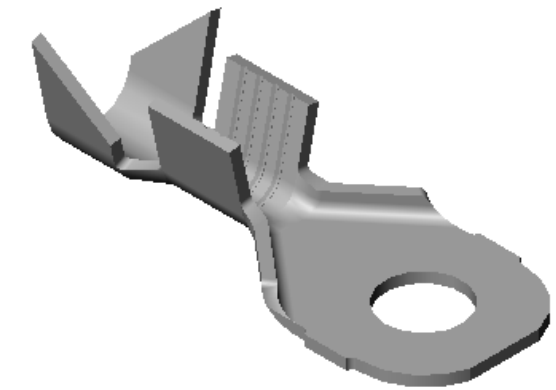


- NOTE :
- 1.) MAT'L: .020 THK., BRASS, #2 TEMPER (HALF HARD), PER ETCO METAL CODE NO. 00400.
 - 2.) MAT'L: .020 THK., PRE-TINNED BRASS, #2 TEMPER (HALF HARD), PER ETCO METAL CODE NO. 01460.
 - 3.) MAT'L: .020 THK., PRE-NICKEL PLATED STEEL, #3 TEMPER (QUARTER HARD), PER ETCO METAL CODE NO. 03260.
 - 4.) PARTS MAY BE COATED WITH A LIGHT FILM OF LUBRICATION USED IN THE MANUFACTURING PROCESS.
 - 5.) WIRE RANGE: 18-14 AWG.
 - 6.) INSUL RANGE: ϕ .090-.130

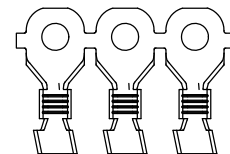
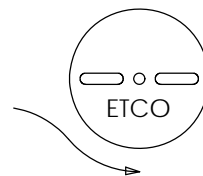
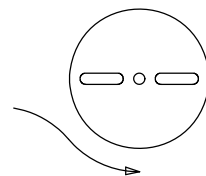


P/C	DESCRIPTION	DIM 'X'	MAT'L	UL	SP
01970	R220-6-HB	ϕ .145	NOTE 1	X	X
01980	R220-6-THB	ϕ .145	NOTE 2	X	X
01985	R220-6-NPS	ϕ .145	NOTE 3		
01991	R220-8-HB	ϕ .171	NOTE 1	X	X
02001	R220-8-THB	ϕ .171	NOTE 2	X	X
02005	R220-10-NPS	ϕ .197	NOTE 3		
02010	R220-10-HB	ϕ .197	NOTE 1	X	X
02020	R220-10-THB	ϕ .197	NOTE 2	X	X

Rev.	Description of Change/ SCN#	Date
1	SCN# 102104 SCJ ORG.ENG.DWG.DATE: 3-5-93	1-13-03
2	ADDED P/Cs SCN#140162 SCJ	8-29-07



DIRECTION EXITING TOOL,
EARS UP, TO THE BACK



DIRECTION TOWARD APPLICATOR,
EARS UP, TO THE FRONT

THIS PRINT IS THE PROPERTY OF ETCO INCORPORATED. NO PART OF THIS DESIGN MAY BE USED IN ANY WAY WITHOUT WRITTEN CONSENT FROM ETCO INCORPORATED.

UNCONTROLLED COPY

<p>THIRD ANGLE PROJECTION TOLERANCES UNLESS OTHERWISE SPECIFIED INCHES: .XX - \pm.030 .XXX - \pm.015 ANGLES: \pm5°</p>	<p>TOOL NO. 0634</p>	<p>Title: RING TERMINAL</p>		
		<p>DO NOT SCALE DWG.</p>	<p>Drawn By: S.JOHNSON</p>	<p>Date: 1-13-03</p>
<p>ETCO Incorporated Engineered Products 25 Bellows Street Warwick, RI 02888 Phone: (401) 467-2400 Fax: (401) 467-9230 www.ETCO.com</p>		<p>Chk'd/App'd By:</p>	<p>Scale: 8X</p>	<p>Size B</p>
		<p>Dwg. No.: R220 cust</p>		