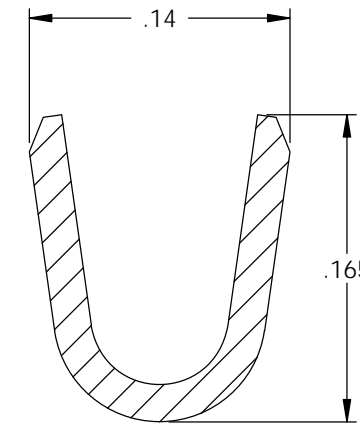
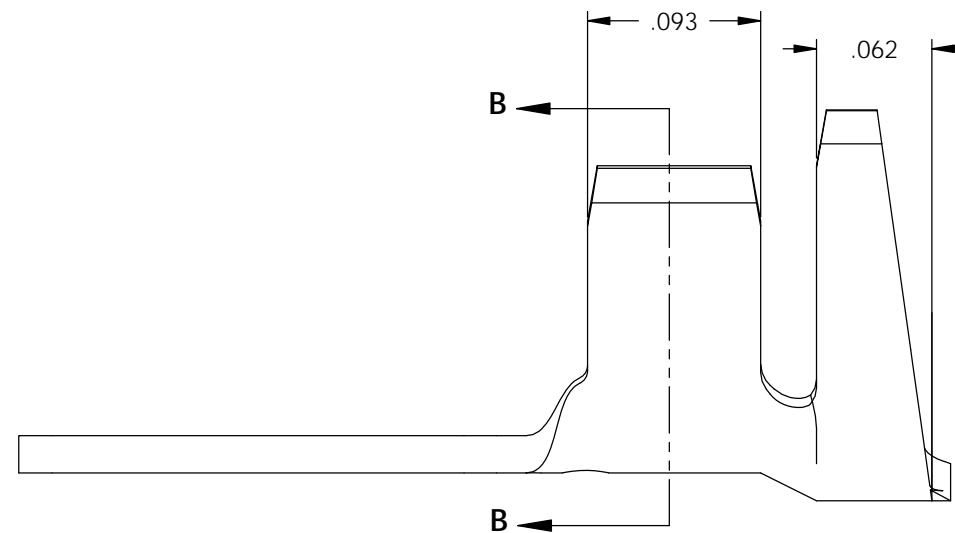
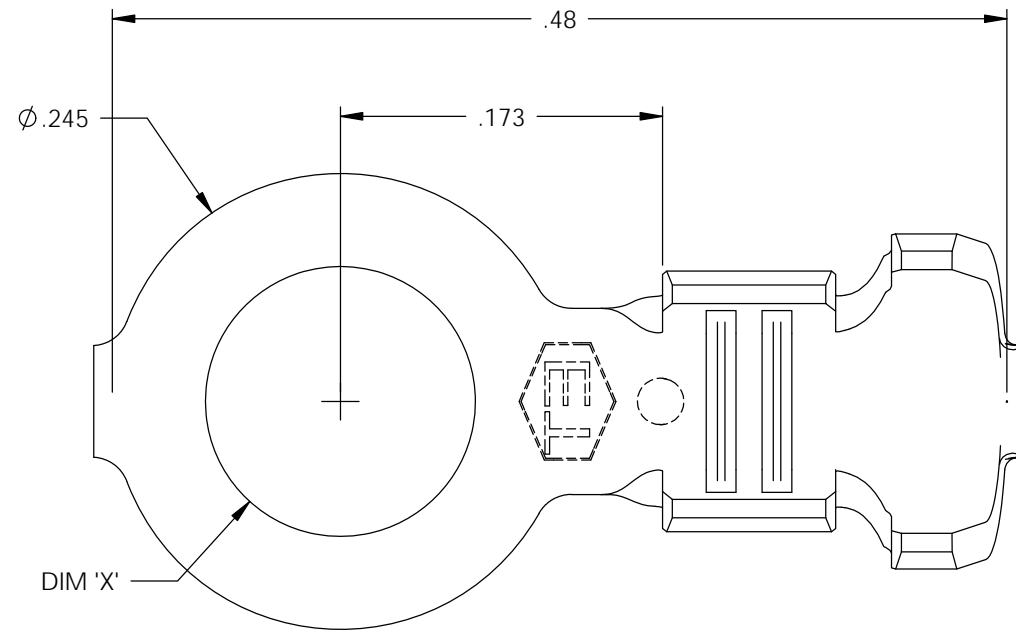
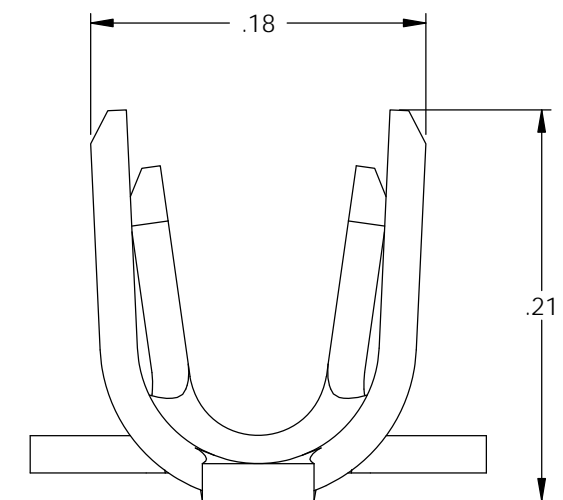


NOTE:

- 1.) MAT'L: .020 THK., BRASS, #2 TEMPER (HALF HARD), PER ETCO METAL CODE NO. 00276.
- 2.) MAT'L: .020 THK., PRE-TINNED BRASS, #2 TEMPER (HALF HARD), PER ETCO METAL CODE NO. 01337.
- 3.) PARTS MAY BE COATED WITH A LIGHT FILM OF LUBRICATION USED IN THE MANUFACTURING PROCESS.
- 4.) WIRE RANGE: 16-14 AWG.
- 5.) INSUL RANGE: ϕ .100-.153

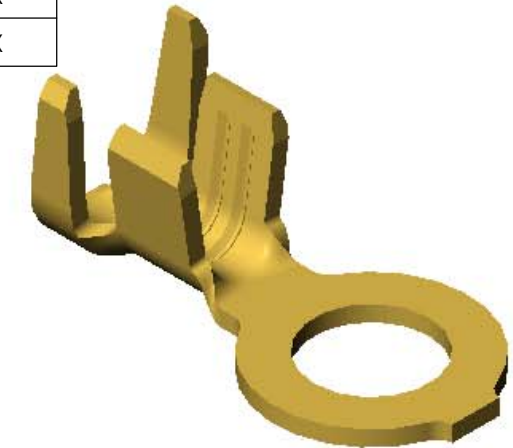


SECTION B-B
SCALE 10 : 1

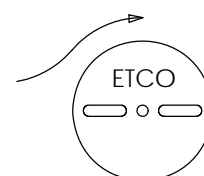
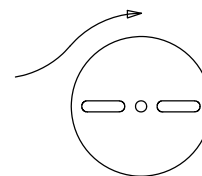


P/C	DESCRIPTION	DIM 'X'	MAT'L	
00334	R24E-2-HB	ϕ .093	NOTE 1	
00335	R24E-2-THB	ϕ .093	NOTE 2	
00358	R24E-4-HB	ϕ .119	NOTE 1	X
00359	R24E-4-THB	ϕ .119	NOTE 2	X
00361	R24E-6-HB	ϕ .145	NOTE 1	X
00362	R24E-6-THB	ϕ .145	NOTE 2	X
00364	R24E-8-HB	ϕ .171	NOTE 1	X
00365	R24E-8-THB	ϕ .171	NOTE 2	X

Rev.	Description of Change/ SCN#	Date
1	REDRAWN ON SOLIDWORKS NO CHANGE SCJ ORG.ENG.DWG.DATE: 6-5-80	1-16-03
2	ADDED P/Cs SCN#140162 SCJ	9-20-07
3	PCA-000026, ADDED 00359 TO PRINT JMR	1-23-08
4	ADDED P/Cs ECR# 1175 SCJ	3/1/12



DIRECTION EXITING TOOL,
EARS UP, TO THE LEFT



DIRECTION TOWARD APPLICATOR,
EARS UP, TO THE RIGHT

UNCONTROLLED COPY

 THIRD ANGLE PROJECTION TOLERANCES UNLESS OTHERWISE SPECIFIED INCHES: .XX - \pm .030 .XXX - \pm .015 ANGLES: \pm 5°	TOOL NO. 0738	Title: RING TERMINAL		
	 ETCO	DO NOT SCALE DWG.	Drawn By: S.JOHNSON	Date: 1-16-03
		Chk'd/App'd By:	Scale: 10X	Size B
		Dwg. No.: R24E cust		