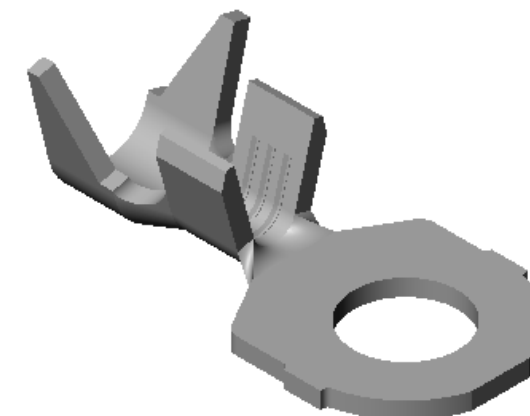
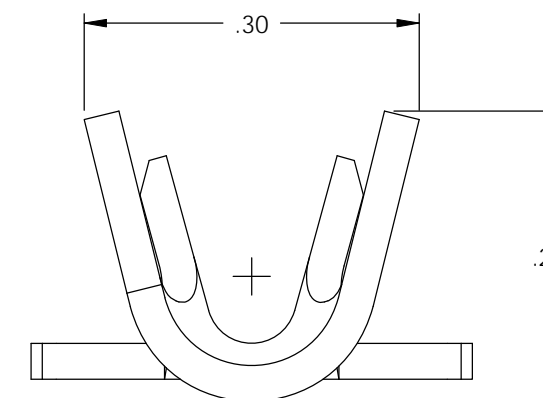
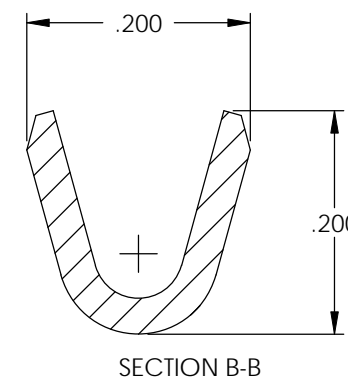
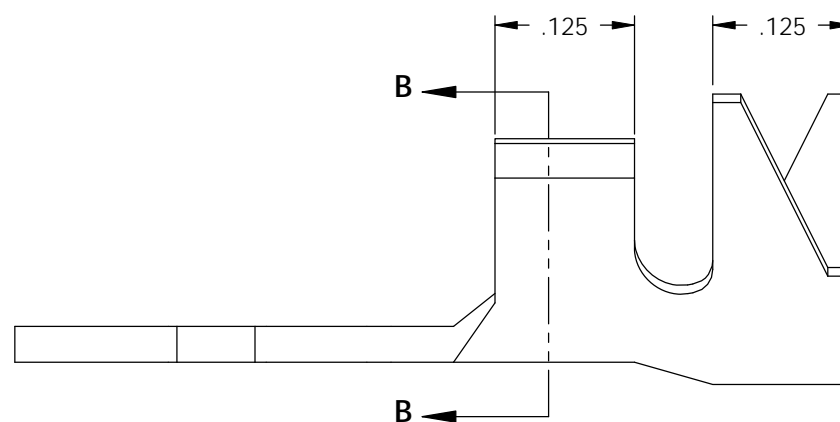
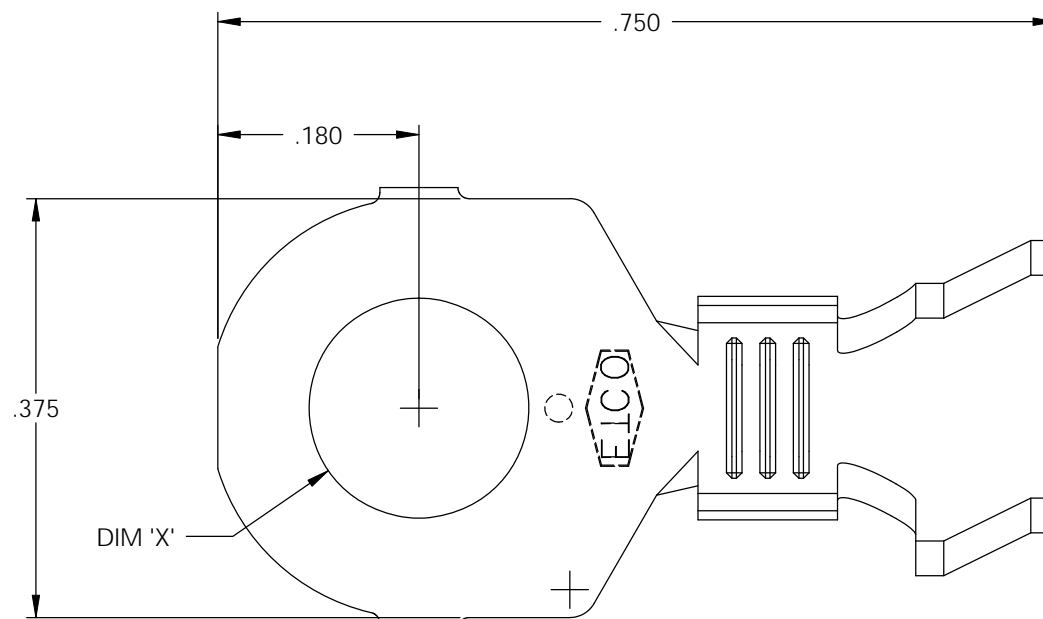
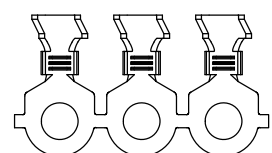


- NOTE:
- 1.) MAT'L: .032 THK., BRASS, #2 TEMPER (HALF HARD), PER ETCO METAL CODE NO. 00840.
 - 2.) MAT'L: .032 THK., PRE-TINNED BRASS, #2 TEMPER (HALF HARD), PER ETCO METAL CODE NO. 01840.
 - 3.) PARTS MAY BE COATED WITH A LIGHT FILM OF LUBRICATION USED IN THE MANUFACTURING PROCESS.
 - 4.) WIRE RANGE: 16-12 AWG
 - 5.) INSUL RANGE: ϕ .090-.140

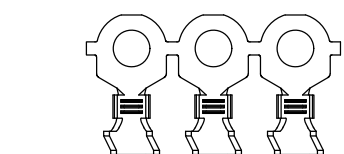
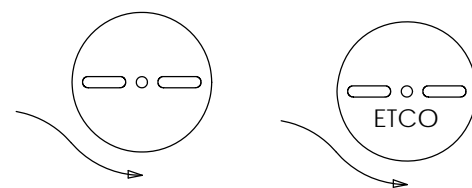


P/C	DESCRIPTION	DIM 'X'	MAT'L	UL	CSA
02025	R280-10-HB	ϕ .197	NOTE 1	X	X
02026	R280-10-THB	ϕ .197	NOTE 2	X	X
02027	R280-8-HB	ϕ .171	NOTE 1	X	X

Rev.	Description of Change/ SCN#	Date
1	SCN# 102054 SCJ ORG.ENG.DWG.DATE: 11-17-92	10-29-02
2	SCN# 103153 SCJ	3-14-06
3	SCN# 140241 SCJ	10-9-07



DIRECTION EXITING TOOL,
EARS UP, TO THE BACK



DIRECTION TOWARD APPLICATOR,
EARS UP, TO THE FRONT

UNCONTROLLED COPY

<p>THIRD ANGLE PROJECTION TOLERANCES UNLESS OTHERWISE SPECIFIED INCHES: .XX - \pm.030 .XXX - \pm.015 ANGLES: $\pm 5^\circ$</p>	<p>TOOL NO. 0036</p>	<p>Title: RING TERMINAL</p>		
		<p>DO NOT SCALE DWG.</p>	<p>Drawn By: S.JOHNSON</p>	<p>Date: 10-24-02</p>
<p>ETCO Incorporated Engineered Products 25 Bellows Street Warwick, RI 02888 Phone: (401) 467-2400 Fax: (401) 467-9230 www.ETCO.com</p>		<p>Chk'd/App'd By:</p>	<p>Scale: 6X</p>	<p>Size B</p>
		<p>Dwg. No.: R280 cust</p>		