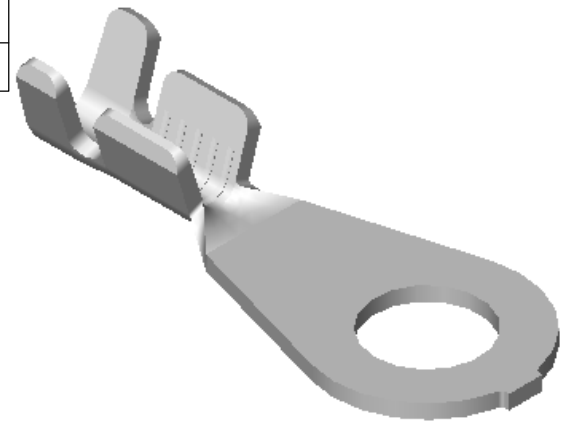
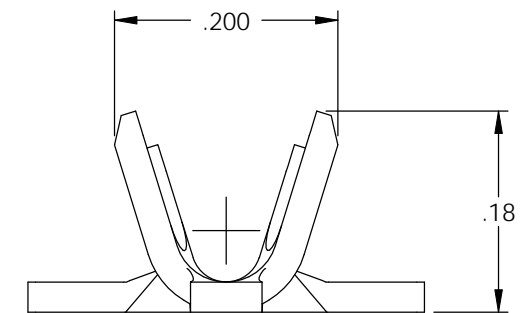
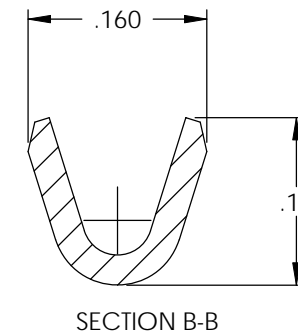
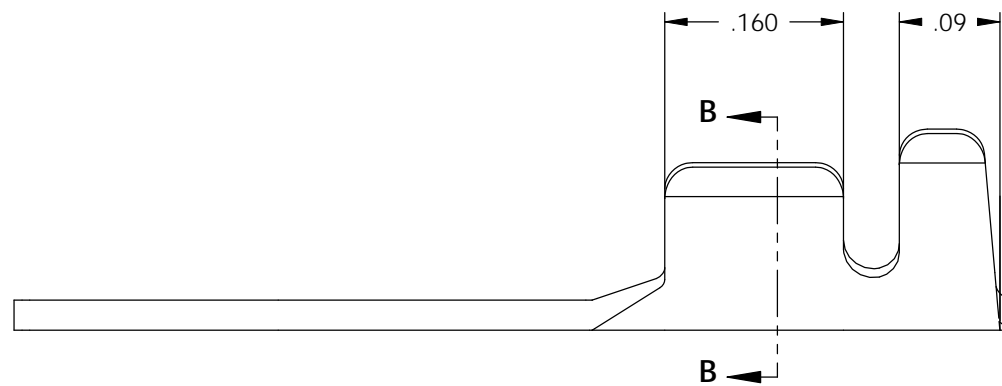
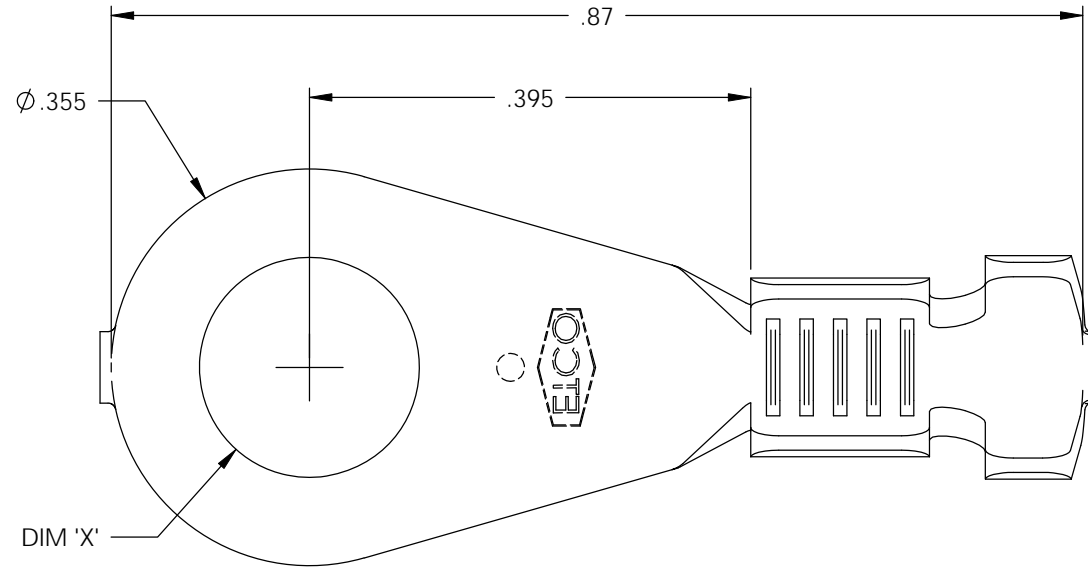
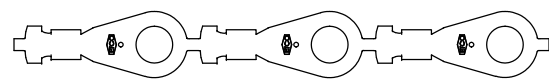


- NOTE:
 1.) MAT'L: .027 THK., BRASS,
 #2 TEMPER (HALF HARD),
 PER ETCO METAL CODE NO. 00693.
 2.) MAT'L: .027 THK., PRE-TINNED BRASS,
 #2 TEMPER (HALF HARD),
 PER ETCO METAL CODE NO. 01669.
 3.) PARTS MAY BE COATED WITH A
 LIGHT FILM OF LUBRICATION
 USED IN THE MANUFACTURING
 PROCESS.
 4.) WIRE RANGE: 20-16 AWG.
 5.) INSUL RANGE: ϕ .075-.125

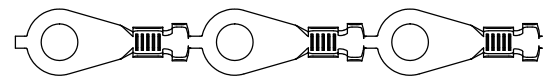
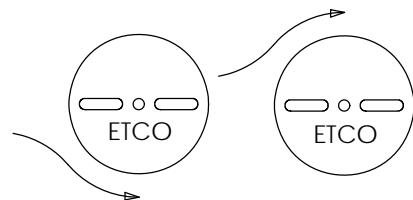


P/C	DESCRIPTION	DIM 'X'	MAT'L	UL	SP
02136	R360E-6-THB	ϕ .145	NOTE 2	X	X
02137	R360E-8-HB	ϕ .171	NOTE 1	X	X
02138	R360E-8-THB	ϕ .171	NOTE 2	X	X
02172	R360E-6-HB	ϕ .145	NOTE 1	X	X
02188	R360E-10-HB	ϕ .197	NOTE 1	X	X
02189	R360E-10-THB	ϕ .197	NOTE 2	X	X
02193	R360E-1/4-HB	ϕ .265	NOTE 1	X	X
02194	R360E-1/4-THB	ϕ .265	NOTE 2	X	X
02204	R360E-212-HB	ϕ .212	NOTE 1	X	X
02208	R360E-12-HB	ϕ .223	NOTE 1	X	X
02221	R360E-12-THB	ϕ .223	NOTE 2	X	X

Rev.	Description of Change/ SCN#	Date
1	REDRAWN ON SOLIDWORKS NO CHANGES SCJ ORG.ENG.DWG.DATE: 9-16-91	1-3-03
2	COMPLETED P/C LIST SCJ	7-23-08



DIRECTION EXITING TOOL,
EARS DOWN, TO THE LEFT



DIRECTION TOWARD APPLICATOR,
EARS UP, TO THE RIGHT

THIS PRINT IS THE PROPERTY OF ETCO INCORPORATED. NO PART OF THIS DESIGN MAY BE USED IN ANY WAY WITHOUT WRITTEN CONSENT FROM ETCO INCORPORATED.

UNCONTROLLED COPY

 THIRD ANGLE PROJECTION TOLERANCES UNLESS OTHERWISE SPECIFIED INCHES: .XX - \pm .030 .XXX - \pm .015 ANGLES: \pm 5°	TOOL NO. 0040	Title: RING TERMINAL		
	 ETCO	DO NOT SCALE DWG.	Drawn By: S.JOHNSON	Date: 1-3-03
		ETCO Incorporated Engineered Products 25 Bellows Street Warwick, RI 02888 Phone: (401) 467-2400 Fax: (401) 467-9230 www.ETCO.com	Chk'd/App'd By:	Scale: 6X Size: B
		Dwg. No.: R360E cust		