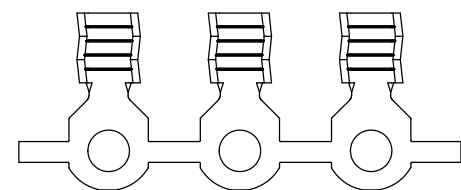
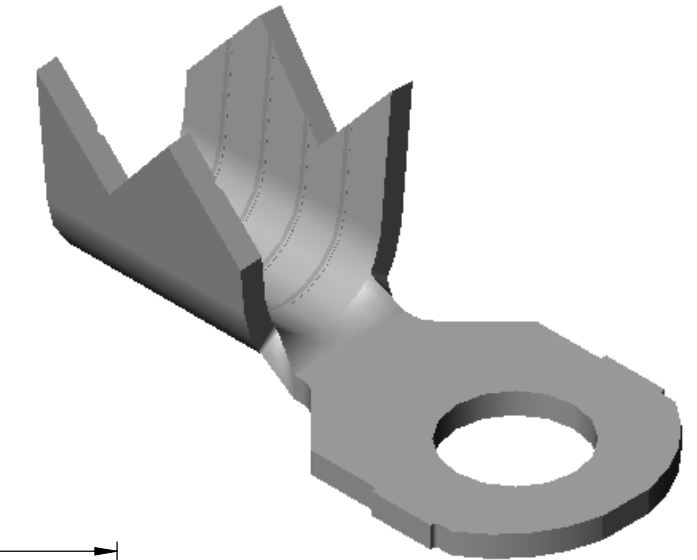
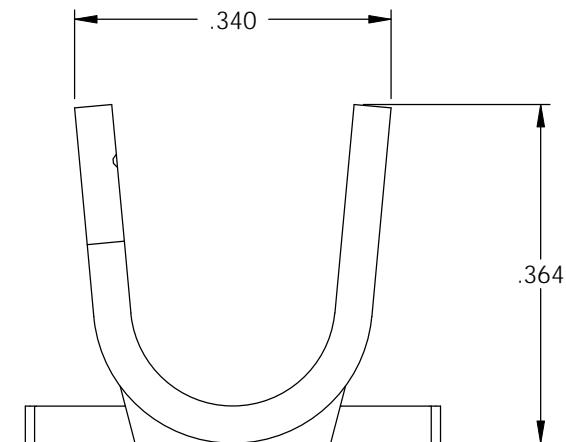
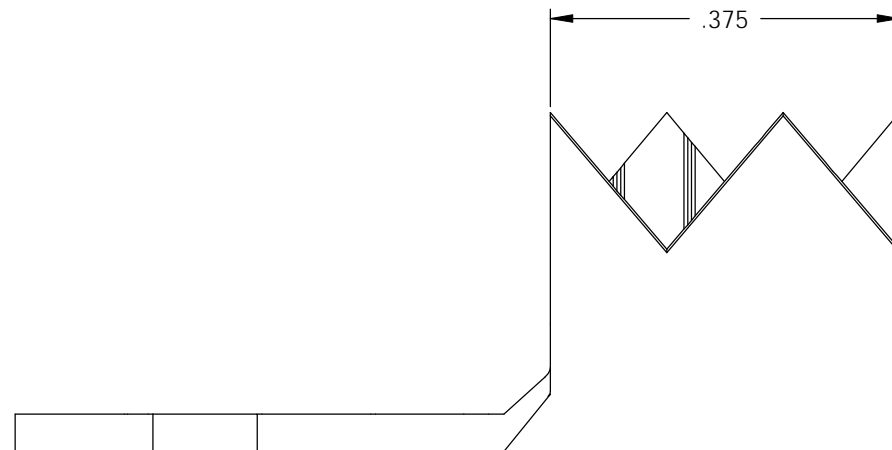
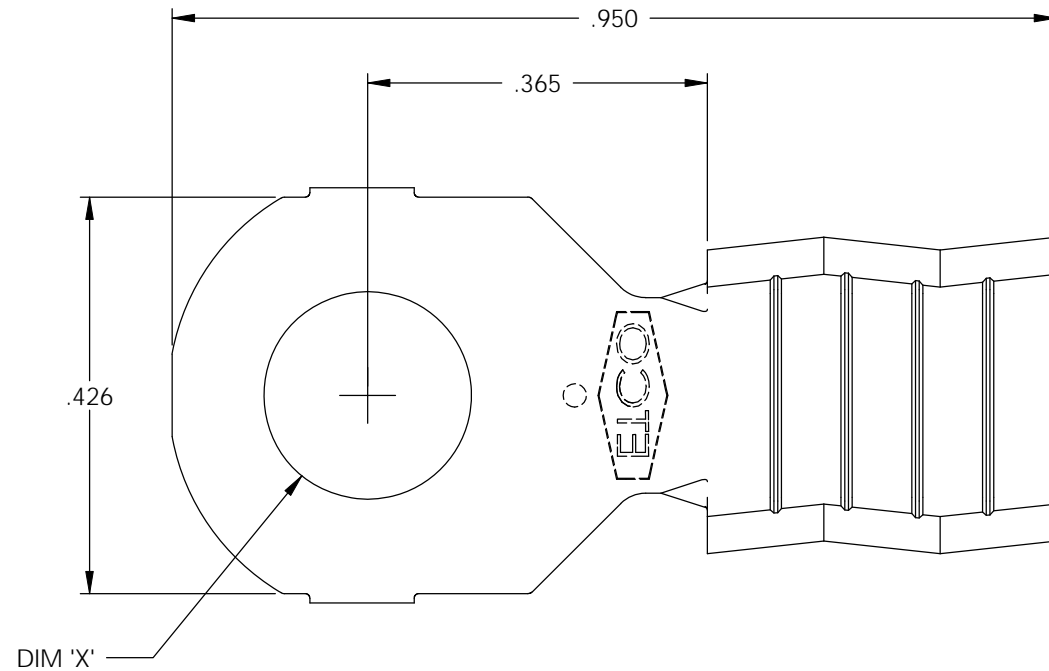
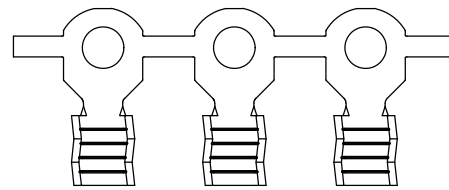
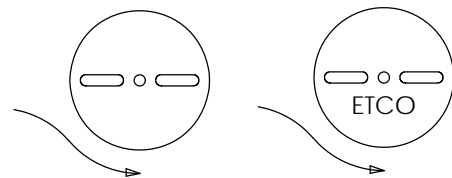


NOTE:

- 1.) MAT'L: .040 THK., BRASS, #2 TEMPER (HALF HARD), PER ETCO METAL CODE NO. 00990.
- 2.) MAT'L: .040 THK., PRE-TINNED BRASS, #2 TEMPER (HALF HARD), PER ETCO METAL CODE NO. 01822.
- 3.) PARTS MAY BE COATED WITH A LIGHT FILM OF LUBRICATION USED IN THE MANUFACTURING PROCESS.
- 4.) WIRE RANGE: 8-6 AWG.



DIRECTION EXITING TOOL, EARS UP, TO THE BACK



DIRECTION TOWARD APPLICATOR, EARS UP, TO THE FRONT

THIS PRINT IS THE PROPERTY OF ETCO INCORPORATED. NO PART OF THIS DESIGN MAY BE USED IN ANY WAY WITHOUT WRITTEN CONSENT FROM ETCO INCORPORATED.

P/C	DESCRIPTION	DIM 'X'	MAT'L	UL	SA
02410	R379-1/4-HB	Ø .265	NOTE 1	X	X
02415	R379-10-HB	Ø .197	NOTE 1		
02417	R379-5/16-THB	Ø .328	NOTE 2		
02418	R379-5/16-HB	Ø .328	NOTE 1		
02420	R379-1/4-THB	Ø .265	NOTE 2	X	X
02421	R379-12-HB	Ø .223	NOTE 1	X	X
02422	R379-12-THB	Ø .223	NOTE 2	X	X

Rev.	Description of Change/ SCN#	Date
1	REDRAWN ON SOLIDWORKS NO CHANGES SCJ ORG.ENG.DWG.DATE: 12-9-91	1-7-03
2	ADDED P/Cs SCN#140162 SCJ	8-21-07

UNCONTROLLED COPY

<p>THIRD ANGLE PROJECTION TOLERANCES UNLESS OTHERWISE SPECIFIED INCHES: .XX - ±.030 .XXX - ±.015 ANGLES: ±5°</p>	<p>TOOL NO. 0047</p>	<p>Title: RING TERMINAL</p>		
		<p>DO NOT SCALE DWG.</p>	<p>Drawn By: S.JOHNSON</p>	<p>Date: 1-7-03</p>
<p>ETCO Incorporated Engineered Products 25 Bellows Street Warwick, RI 02888 Phone: (401) 467-2400 Fax: (401) 467-9230 www.ETCO.com</p>		<p>Chk'd/App'd By:</p>	<p>Scale: 5X</p>	<p>Size B</p>
		<p>Dwg. No.: R379 cust</p>		