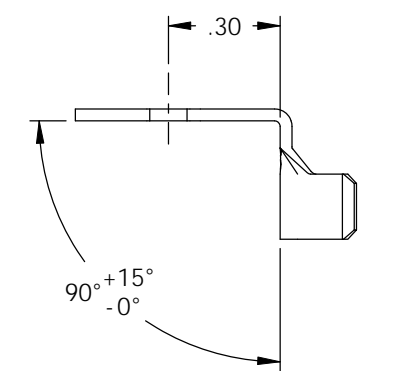
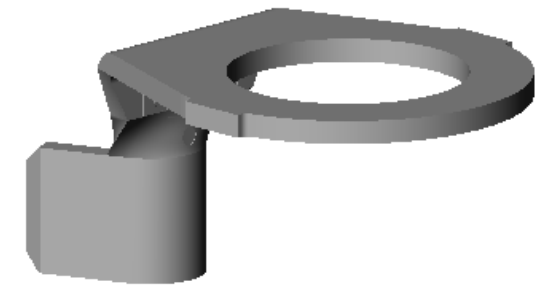
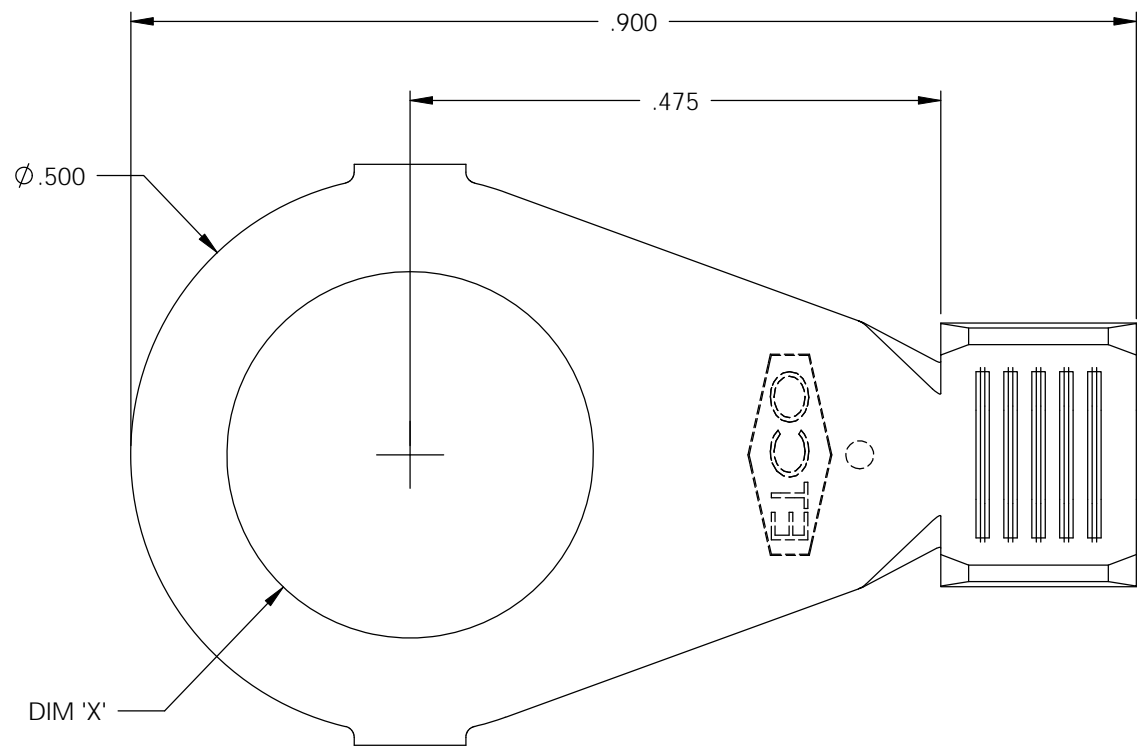


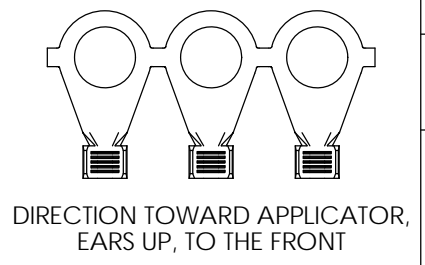
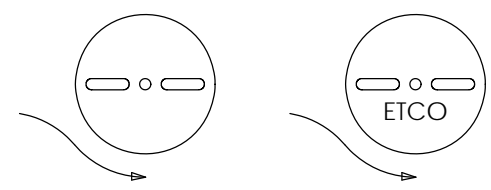
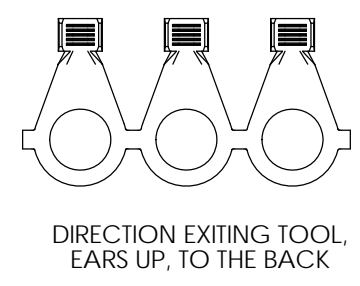
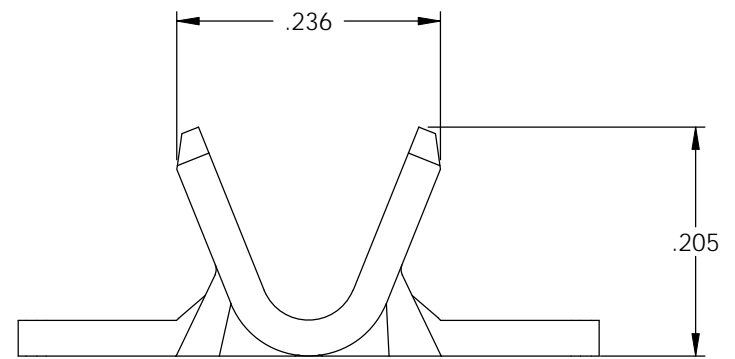
- NOTE:
- 1.) MAT'L: .032 THK., BRASS, #2 TEMPER (HALF HARD), PER ETCO METAL CODE NO. 00870.
 - 2.) MAT'L: .032 THK., PRE-TINNED BRASS, #2 TEMPER (HALF HARD), PER ETCO METAL CODE NO. 01785.
 - 3.) PARTS MAY BE COATED WITH A LIGHT FILM OF LUBRICATION USED IN THE MANUFACTURING PROCESS.
 - 4.) WIRE RANGE: 14-12 AWG.

P/C	DESCRIPTION	DIM 'X'	MAT'L
02937	R395-190-HB	Ø .190	NOTE 1
02953	R395-8-HB	Ø .171	NOTE 1

Rev.	Description of Change/ SCN#	Date
1	REDRAWN ON SOLIDWORKS NO CHANGES SCJ ORG.ENG.DWG.DATE: 11-14-94	1-8-03
2	ISSUED P/C 02953 SCJ	10-15-04



VIEW OF PART BENT IN APPLICATOR SCALE 2:1



THIS PRINT IS THE PROPERTY OF ETCO INCORPORATED. NO PART OF THIS DESIGN MAY BE USED IN ANY WAY WITHOUT WRITTEN CONSENT FROM ETCO INCORPORATED.

UNCONTROLLED COPY

<p>THIRD ANGLE PROJECTION TOLERANCES UNLESS OTHERWISE SPECIFIED INCHES: .XX - ±.030 .XXX - ±.015 ANGLES: ±5°</p>	<p>TOOL NO. 0050</p>	<p>Title: RING TERMINAL</p>		
		<p>DO NOT SCALE DWG.</p>	<p>Drawn By: S.JOHNSON</p>	<p>Date: 1-8-03</p>
<p>ETCO Incorporated Engineered Products 25 Bellows Street Warwick, RI 02888 Phone: (401) 467-2400 Fax: (401) 467-9230 www.ETCO.com</p>		<p>Chk'd/App'd By:</p>	<p>Scale: 6X</p>	<p>Size B</p>
		<p>Dwg. No.:</p>	<p>R395 cust</p>	