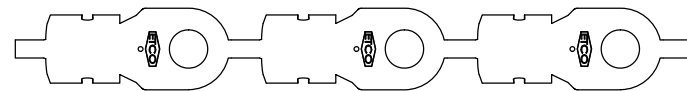
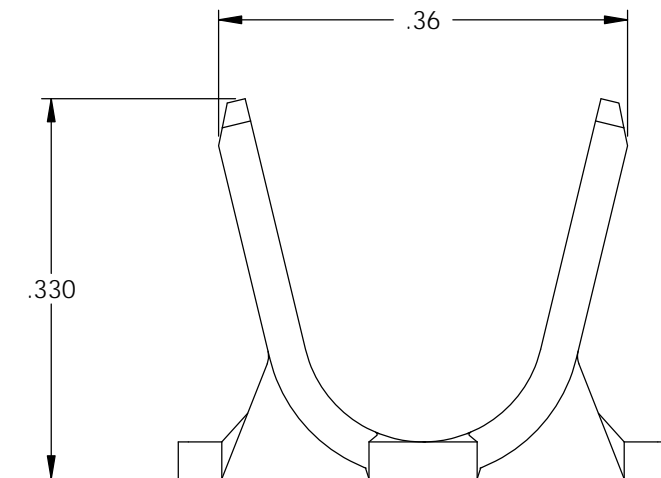
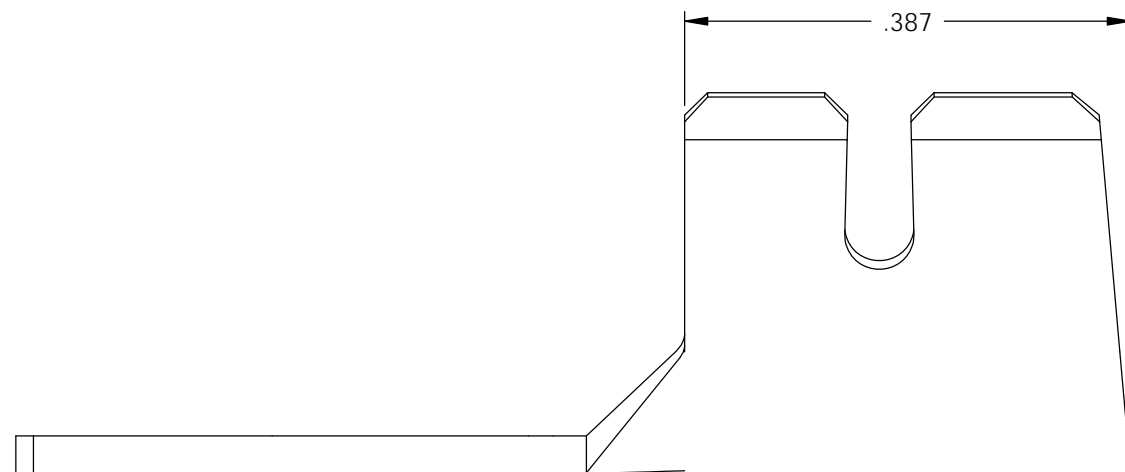
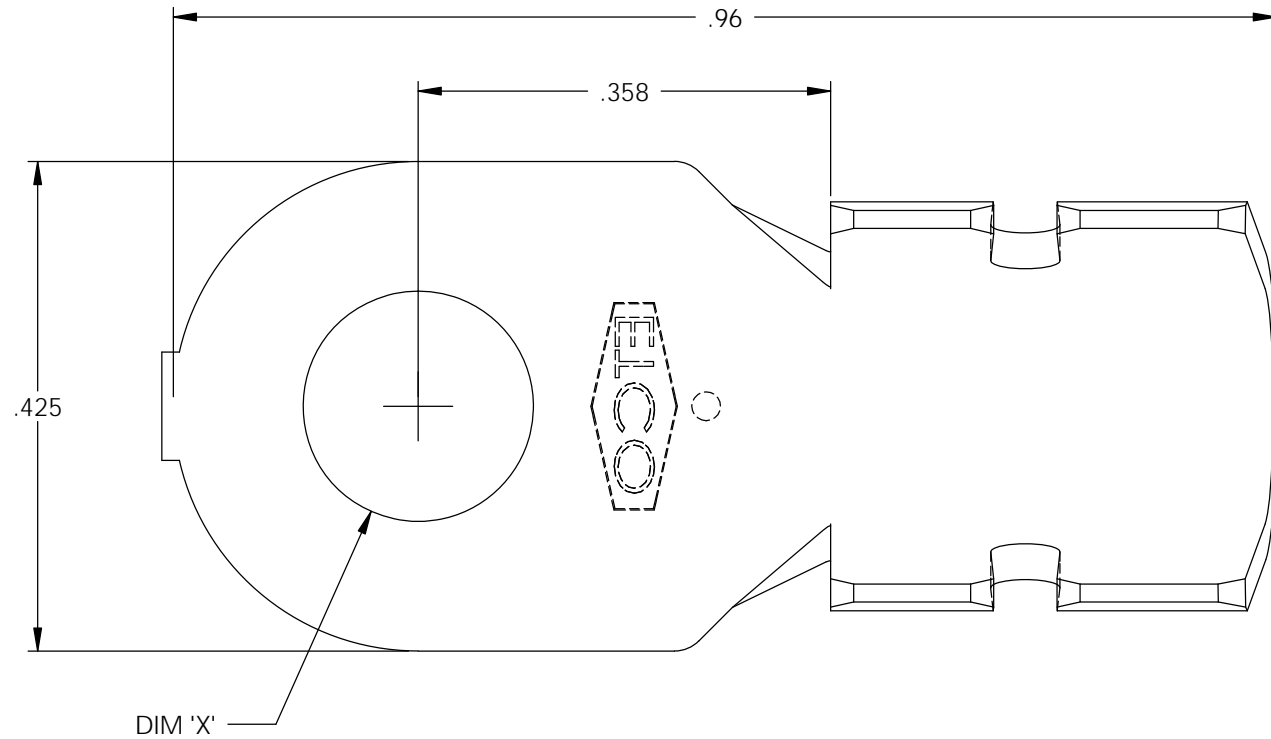


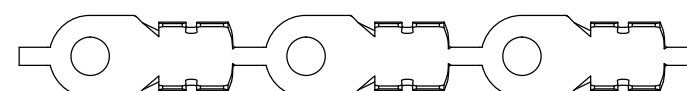
- NOTE:
 1.) MAT'L: .032 THK., BRASS,
 #2 TEMPER (HALF HARD),
 PER ETCO METAL CODE NO. 00825.
 2.) MAT'L: .035 THK., BRASS,
 #2 TEMPER (HALF HARD),
 PER ETCO METAL CODE NO. 05085.
 3.) PARTS MAY BE COATED WITH A LIGHT
 FILM OF LUBRICATION USED IN THE
 MANUFACTURING PROCESS.
 4.) WIRE RANGE: 8-6 AWG.

P/C	DESCRIPTION	DIM 'X'	MAT'L
02945	R415E-262-HB	Ø .262	NOTE 1
02946	R415E-200-HB	Ø .200	NOTE 1
02947	R415E-262-035-HB	Ø .262	NOTE 2

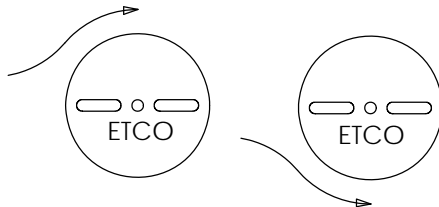
Rev.	Description of Change/ SCN#	Date
1	REDRAWN ON SOLIDWORKS NO CHANGES SCJ ORG.ENG.DWG.DATE: 8-23-89	3-10-03
2	COMPLETED P/C LIST SCJ	9-18-08
3	ADDED 02945 SCJ	2/09/15



DIRECTION EXITING TOOL,
EARS DOWN, TO THE LEFT



DIRECTION TOWARD APPLICATOR,
EARS UP, TO THE RIGHT



THIS PRINT IS THE PROPERTY OF ETCO INCORPORATED. NO PART OF THIS DESIGN MAY BE USED IN ANY WAY WITHOUT WRITTEN CONSENT FROM ETCO INCORPORATED.

UNCONTROLLED COPY

<p>THIRD ANGLE PROJECTION TOLERANCES UNLESS OTHERWISE SPECIFIED INCHES: .XX - ±.030 .XXX - ±.015 ANGLES: ±5°</p>	<p>TOOL NO. 0619</p>	<p>Title: RING TERMINAL</p>		
		<p>DO NOT SCALE DWG.</p>	<p>Drawn By: S.JOHNSON</p>	<p>Date: 3-10-03</p>
<p>ETCO Incorporated Engineered Products 25 Bellows Street Warwick, RI 02888 Phone: (401) 467-2400 Fax: (401) 467-9230 www.ETCO.com</p>		<p>Chk'd/App'd By:</p>	<p>Scale: 6X</p>	<p>Size B</p>
		<p>Dwg. No.: R415E cust</p>		