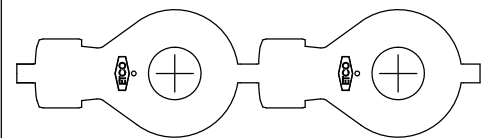
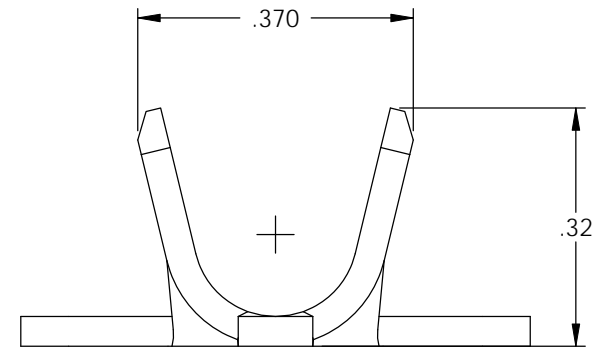
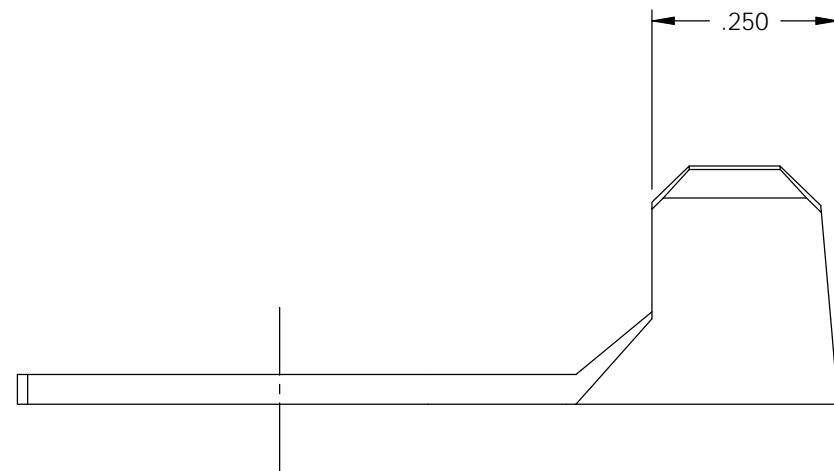
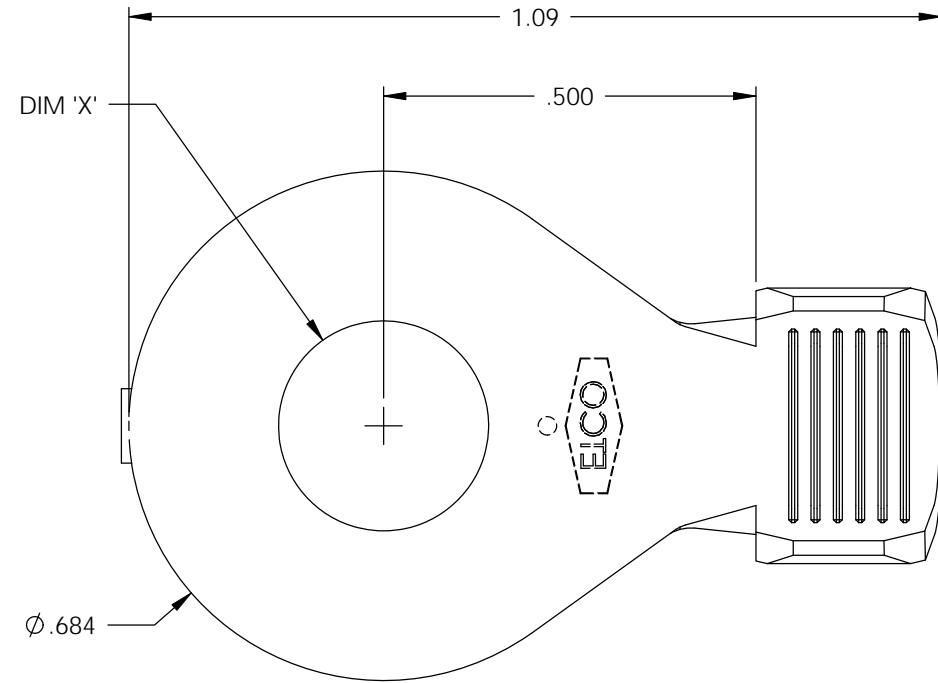
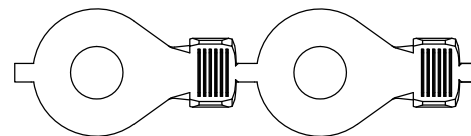
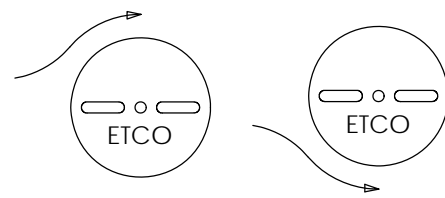


NOTE:


- 1.) MAT'L: .040 THK., BRASS, #2 TEMPER (HALF HARD), PER ETCO METAL CODE NO. 00966.
- 2.) MAT'L: .040 THK., PRE-TINNED BRASS, #2 TEMPER (HALF HARD), PER ETCO METAL CODE NO. 01878.
- 3.) MAT'L: .040 THK., C11000 PRE-TINNED COPPER, #2 TEMPER (HALF HARD), PER ETCO METAL CODE NO. 00221.
- 4.) PARTS MAY BE COATED WITH A LIGHT FILM OF LUBRICATION USED IN THE MANUFACTURING PROCESS.
- 5.) WIRE RANGE: 10-8 AWG.



DIRECTION EXITING TOOL,  
EARS DOWN, TO THE LEFT





DIRECTION TOWARD APPLICATOR,  
EARS UP, TO THE RIGHT

P/C	DESCRIPTION	DIM 'X'	MAT'L	
02966	R450E-1/4-TCU	Ø .265	NOTE 3	
02967	R450E-10-TCU	Ø .197	NOTE 3	
02968	R450E-282-TCU	Ø .282	NOTE 3	
02969	R450E-5/16-TCU	Ø .328	NOTE 3	
02978	R450E-5/16-HB	Ø .328	NOTE 1	
02988	R450E-1/4-HB	Ø .265	NOTE 1	
02991	R450E-1/4-THB	Ø .265	NOTE 2	
02992	R450E-10-HB	Ø .197	NOTE 1	
02993	R450E-10-THB	Ø .197	NOTE 2	
02994	R450E-282-THB	Ø .282	NOTE 2	X
02995	R450E-282-HB	Ø .282	NOTE 1	X
02997	R450E-5/16-THB	Ø .328	NOTE 2	

Rev.	Description of Change/ SCN#	Date
1	SCN# 102057 SCJ ORG.ENG.DWG.DATE: 5-20-92	11-5-02
2	ISSUED TCU P/Cs SCJ	9-14-04
3	SCN# 103041 SCJ	9-7-05
4	COMPLETED P/C LIST SCJ	7-23-08



# UNCONTROLLED COPY

 THIRD ANGLE PROJECTION TOLERANCES UNLESS OTHERWISE SPECIFIED INCHES: .XX - ±.030 .XXX - ±.015 ANGLES: ±5°	TOOL NO. <b>0054</b>	Title: <b>RING TERMINAL</b>		
		DO NOT SCALE DWG.	Drawn By: S.JOHNSON	Date: 11-5-02
ETCO Incorporated Engineered Products 25 Bellows Street Warwick, RI 02888 Phone: (401) 467-2400 Fax: (401) 467-9230 www.ETCO.com		Chk'd/App'd By:	Scale: <b>4X</b>	Size <b>B</b>
		Dwg. No.: <b>R450E cust</b>		