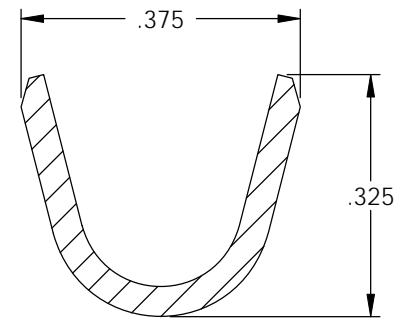
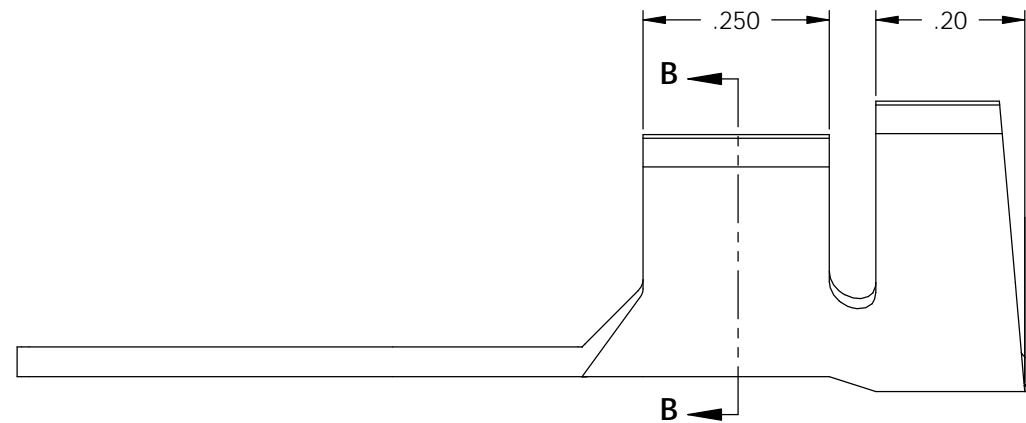
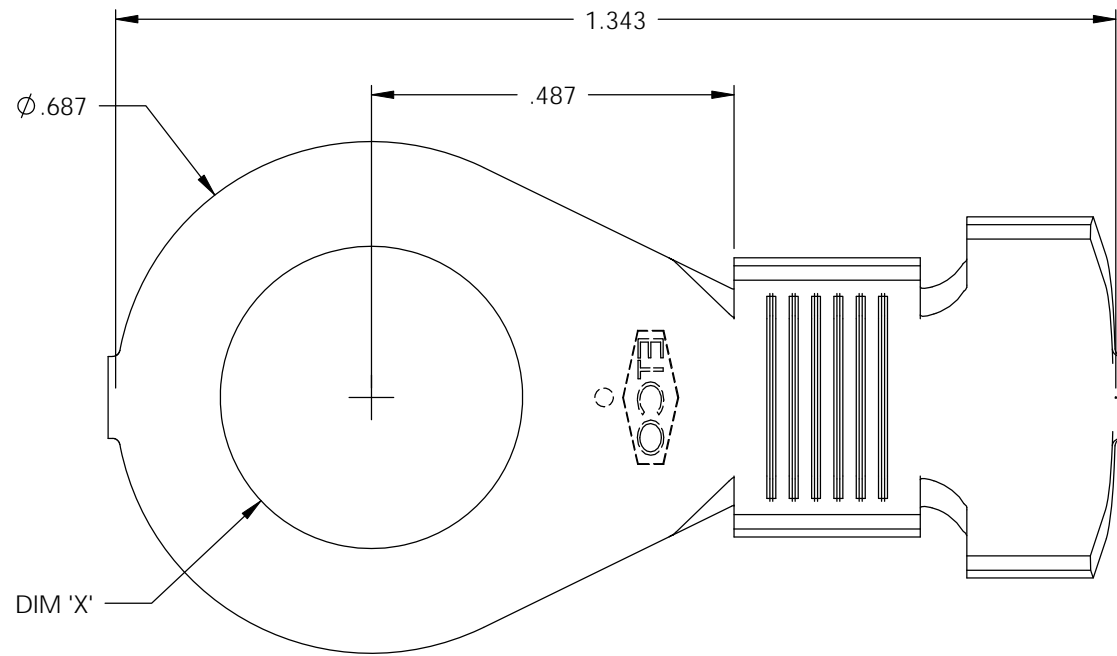
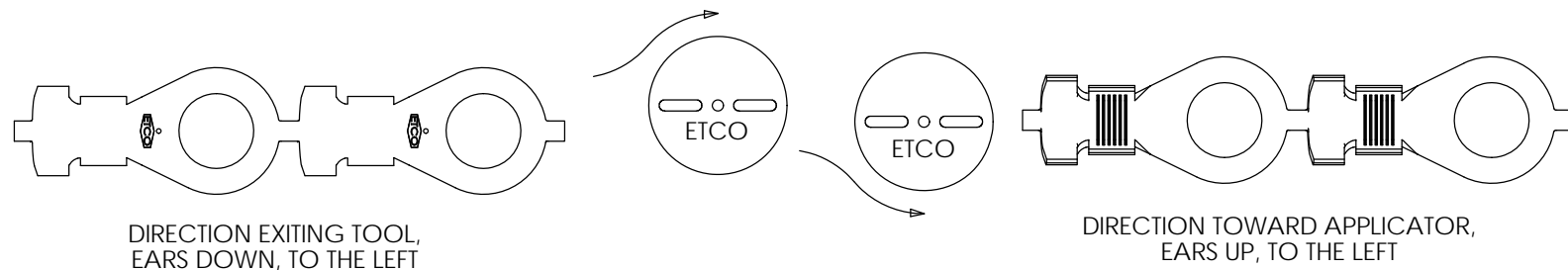
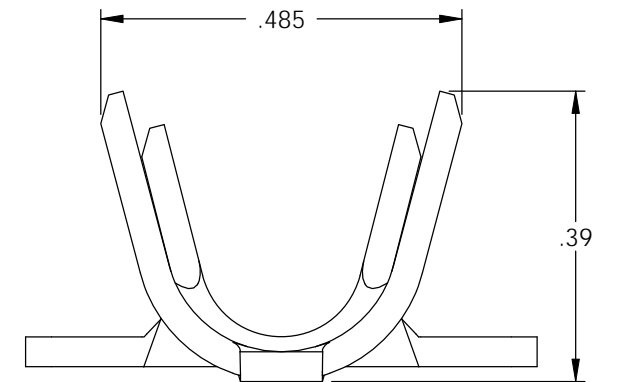


NOTE:

- 1.) MAT'L: .040 THK., BRASS, #2 TEMPER (HALF HARD), PER ETCO METAL CODE NO. 00968.
- 2.) MAT'L: .040 THK., PRE-TINNED BRASS, #2 TEMPER (HALF HARD), PER ETCO METAL CODE NO. 01823.
- 3.) PARTS MAY BE COATED IN A LIGHT FILM OF LUBRICATION USED IN THE MANUFACTURING PROCESS.
- 4.) WIRE RANGE: 10-8 AWG.
- 5.) INSUL RANGE: ϕ .165-.350



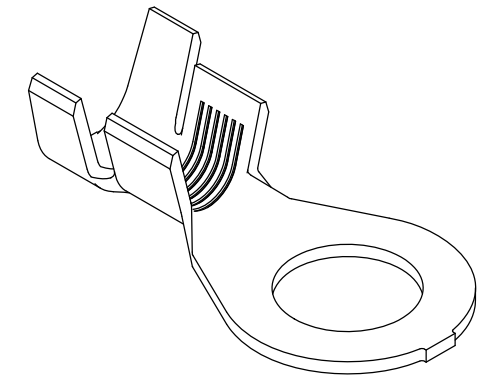
SECTION B-B
SCALE 4 : 1



THIS PRINT IS THE PROPERTY OF ETCO INCORPORATED. NO PART OF THIS DESIGN MAY BE USED IN ANY WAY WITHOUT WRITTEN CONSENT FROM ETCO INCORPORATED.

P/C	DESCRIPTION	DIM 'X'	MAT'L	UL	CS
02996	R460E-1/2-HB	ϕ .515	NOTE 1	X	X
03009	R460E-5/16-HB	ϕ .328	NOTE 1	X	X
03010	R460E-10-THB	ϕ .197	NOTE 2		
03012	R460E-1/4-HB	ϕ .265	NOTE 1	X	X
03013	R460E-1/4-THB	ϕ .265	NOTE 2	X	X
03014	R460E-282-THB	ϕ .282	NOTE 2		
03015	R460E-345-THB	ϕ .345	NOTE 2		
03016	R460E-205-THB	ϕ .205	NOTE 2		
03017	R460E-1/2-THB	ϕ .515	NOTE 2	X	X
03019	R460E-282-HB	ϕ .282	NOTE 1		
03020	R460E-3/8-HB	ϕ .406	NOTE 1	X	X
03021	R460E-345-HB	ϕ .345	NOTE 1		
03022	R460E-5/16-THB	ϕ .328	NOTE 2	X	X
03023	R460E-3/8-THB	ϕ .406	NOTE 2	X	X

Rev.	Description of Change/ SCN#	Date
1	REDRAWN ON SOLIDWORKS NO CHANGES SCJ ORG.ENG.DWG.DATE: 1-22-71	1-17-03
2	ADDED P/Cs SCN#140162 SCJ	9-25-07



UNCONTROLLED COPY

<p>THIRD ANGLE PROJECTION TOLERANCES UNLESS OTHERWISE SPECIFIED INCHES: .XX - \pm.030 .XXX - \pm.015 ANGLES: \pm5°</p>	<p>TOOL NO. 0739</p>	<p>Title: RING TERMINAL</p>		
		<p>DO NOT SCALE DWG.</p>	<p>Drawn By: S.JOHNSON</p>	<p>Date: 1-17-03</p>
<p>ETCO Incorporated Engineered Products 25 Bellows Street Warwick, RI 02888 Phone: (401) 467-2400 Fax: (401) 467-9230 www.ETCO.com</p>		<p>Chk'd/App'd By:</p>	<p>Scale: 4X</p>	<p>Size B</p>
<p>Dwg. No.: R460E cust</p>				