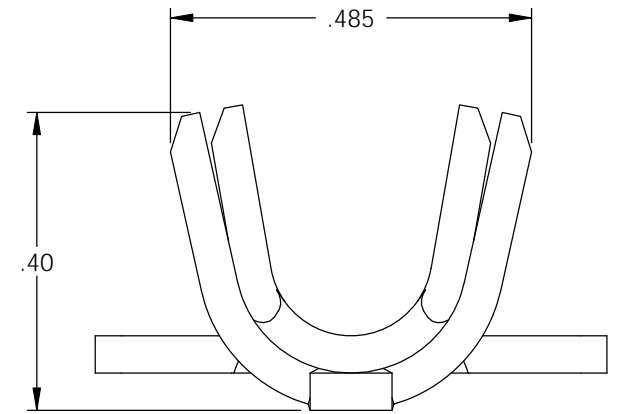
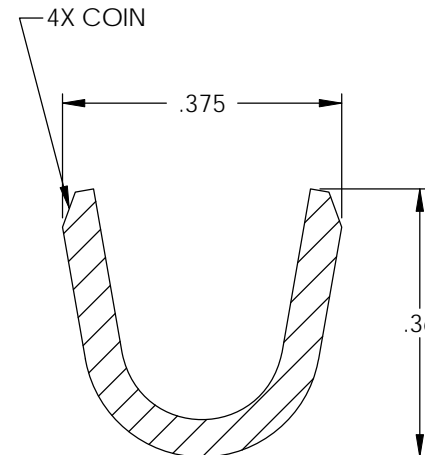
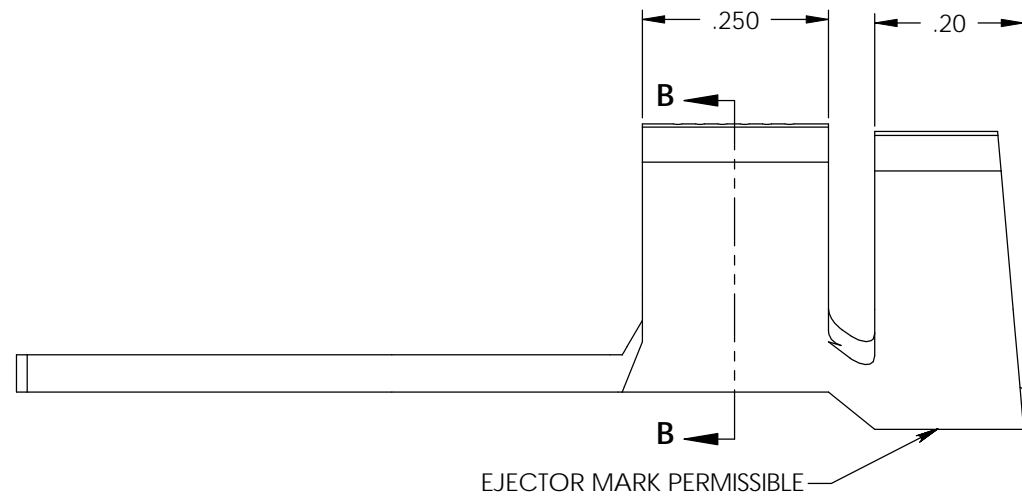
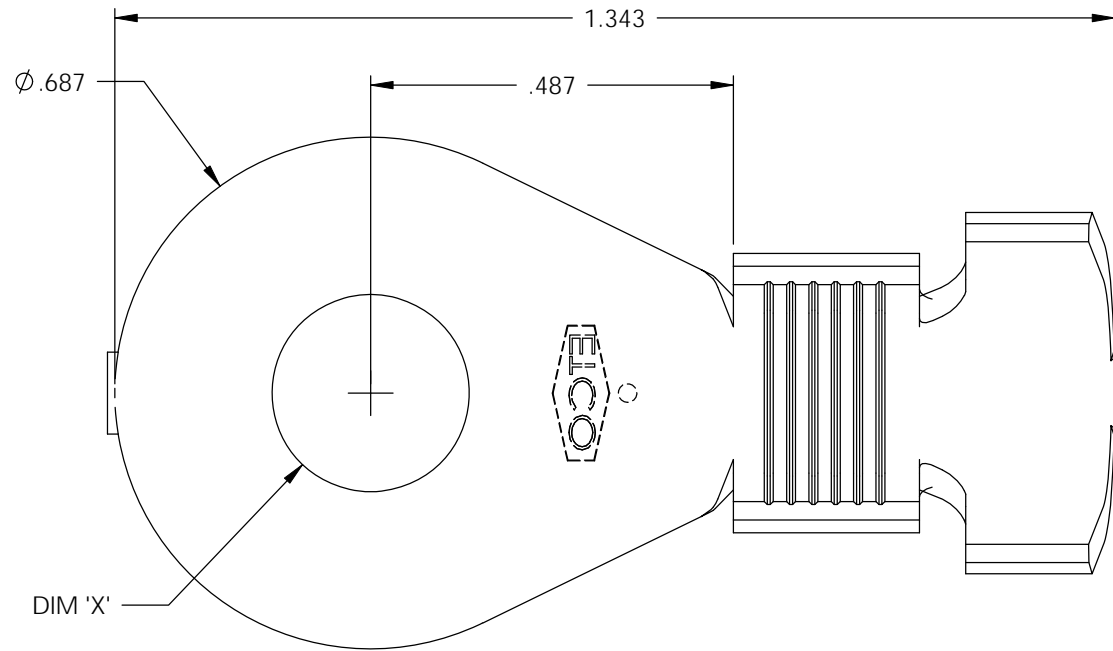


NOTE:

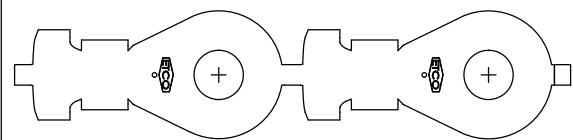
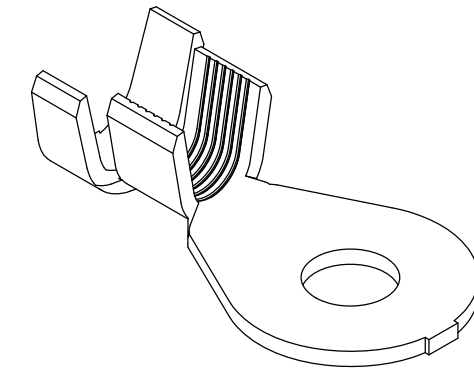
- 1.) MAT'L: .050 THK., BRASS, #2 TEMPER (HALF HARD), PER ETCO METAL CODE NO. 07039.
- 2.) MAT'L: .050 THK., PRE-TINNED BRASS, #2 TEMPER (HALF HARD), PER ETCO METAL CODE NO. 01882.
- 3.) PARTS MAY BE COATED WITH A LIGHT FILM OF LUBRICATION USED IN THE MANUFACTURING PROCESS.
- 4.) WIRE RANGE: 6-10 AWG.
- 5.) INSUL RANGE:  $\phi$ .165-.350



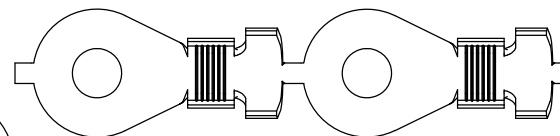
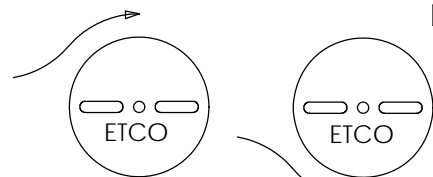
SECTION B-B  
SCALE 4 : 1

P/C	DESCRIPTION	DIM 'X'	MAT'L	UL	SP
83001	R480E-3/8-THB	$\phi$ .406	NOTE 2	X	X
83018	R480E-5/16-HB	$\phi$ .328	NOTE 1	X	X
83024	R480E-1/4-THB	$\phi$ .265	NOTE 2	X	X
83025	R480E-5/16-THB	$\phi$ .328	NOTE 2	X	X
83031	R480E-10-THB	$\phi$ .197	NOTE 2	X	

Rev.	Description of Change/ SCN#	Date
1	REDRAWN ON SOLIDWORKS NO CHANGES SCJ ORG.ENG.DWG.DATE: 11-28-75	5-5-03
2	SCN# 102448 SCJ	2-11-04
3	SCN# 102478 SCJ	3-1-04
4	SCN# 102542 SCJ	3-31-04
5	UPDATED FORMAT SCN#140162 SCJ	9-25-07



DIRECTION EXITING TOOL,  
EARS DOWN, TO THE LEFT



DIRECTION TOWARD APPLICATOR,  
EARS UP, TO THE RIGHT

THIS PRINT IS THE PROPERTY OF ETCO INCORPORATED. NO PART OF THIS DESIGN MAY BE USED IN ANY WAY WITHOUT WRITTEN CONSENT FROM ETCO INCORPORATED.

# UNCONTROLLED COPY

<p>THIRD ANGLE PROJECTION TOLERANCES UNLESS OTHERWISE SPECIFIED INCHES: .XX - <math>\pm</math>.030 .XXX - <math>\pm</math>.015 ANGLES: <math>\pm 5^\circ</math></p>	<p>TOOL NO. <b>0739</b></p>	<p>Title: <b>RING TERMINAL</b></p>		
		<p>DO NOT SCALE DWG.</p>	<p>Drawn By: S.JOHNSON</p>	<p>Date: 5-5-03</p>
<p>ETCO Incorporated Engineered Products 25 Bellows Street Warwick, RI 02888 Phone: (401) 467-2400 Fax: (401) 467-9230 www.ETCO.com</p>		<p>Chk'd/App'd By:</p>	<p>Scale: 4X</p>	<p>Size B</p>
		<p>Dwg. No.: <b>R480E cust</b></p>		