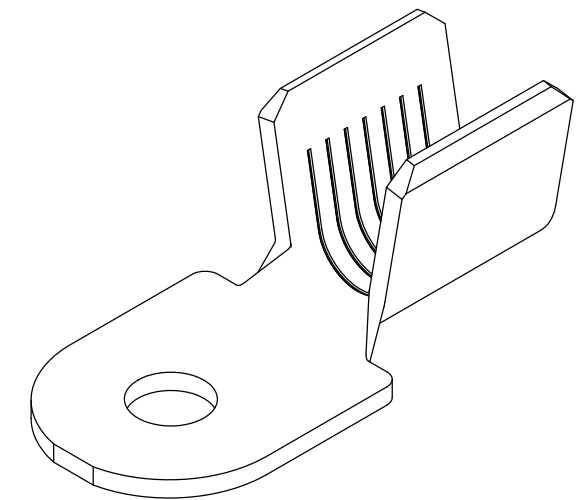
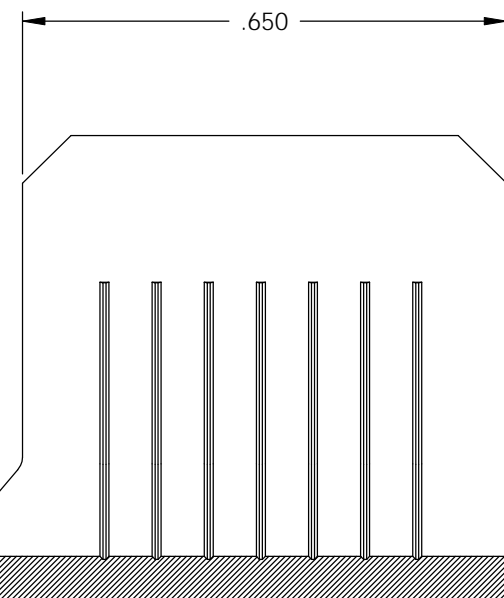


P/C	DESCRIPTION	MAT'L	DIM "X"	
02955	R550E-1/2-TCU	NOTE 3	Ø .530	X
02957	R550E-3/8-TCU	NOTE 3	Ø .403	
02958	R550E-14-TCU	NOTE 3	Ø .250	
02959	R550E-350-TCU	NOTE 3	Ø .350	
02960	R550E-468-TCU	NOTE 3	Ø .468	
03036	R550E-281-TCU	NOTE 3	Ø .281	
82321	R550E-3/8-HB	NOTE 1	Ø .403	
82323	R550E-14-HB	NOTE 1	Ø .250	
82325	R550E-350-HB	NOTE 1	Ø .350	
82327	R550E-468-HB	NOTE 1	Ø .468	
82329	R550E-3/8-THB	NOTE 2	Ø .403	

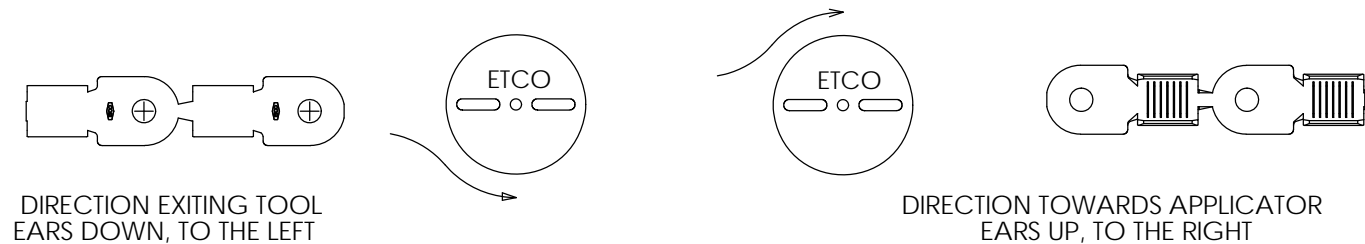
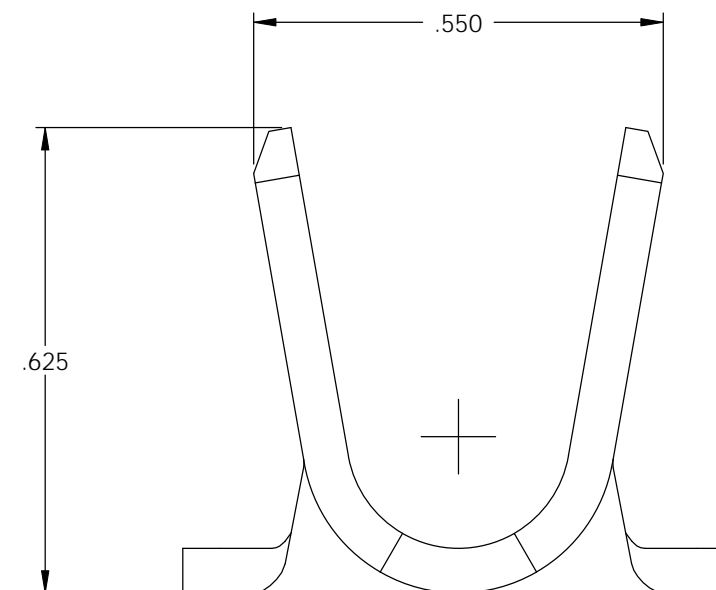
Rev.	Description of Change/ SCN#	Date
6	TRANSFER FROM CP TO EP	6/5/03
7	SCN# 102316 SCJ	10-27-03
8	ISSUED TCU P/Cs SCJ	9-14-04
9	SCN# 103196 SCJ	6-1-06
10	SCN# 140105 SCJ	1-25-07
11	SCN# 140243 SCJ	10-2-07
12	SCN# 140291 SCJ	11-6-07





- NOTES:
1. MATERIAL: .060 THICK C26000 BRASS; 1/2 HARD, ANNEALED TO TEMPER, PER ETCO METAL CODE 07029.
  2. MATERIAL: .060 THICK C26000 PRE-TINNED BRASS; 1/2 HARD, ANNEALED TO TEMPER, PER ETCO METAL CODE 00109.
  3. MATERIAL: .060 THICK C11000 PRE-TINNED COPPER; 1/2 HARD, PER ETCO METAL CODE 00222.
  4. PARTS MAY BE COATED WITH A LIGHT FILM OF LUBRICATION USED IN THE MANUFACTURING PROCESS.
  5. WIRE RANGE: #2 AWG.



SECTION A-A



# UNCONTROLLED COPY

 THIRD ANGLE PROJECTION TOLERANCES UNLESS OTHERWISE SPECIFIED INCHES: .XX - ±.030 .XXX - ±.015 ANGLES: ±5°	TOOL NO. <b>0843</b>	Title: <b>RING TERMINAL</b>		
		DO NOT SCALE DWG.	Drawn By: <b>C.O'REILLY</b>	Date: <b>6-5-03</b>
ETCO Incorporated Engineered Products 25 Bellows Street Warwick, RI 02888 Phone: (401) 467-2400 Fax: (401) 467-9230 www.ETCO.com		Chk'd/App'd By:	Scale: <b>4X</b>	Size <b>B</b>
		Dwg. No.: <b>R550E cust</b>		