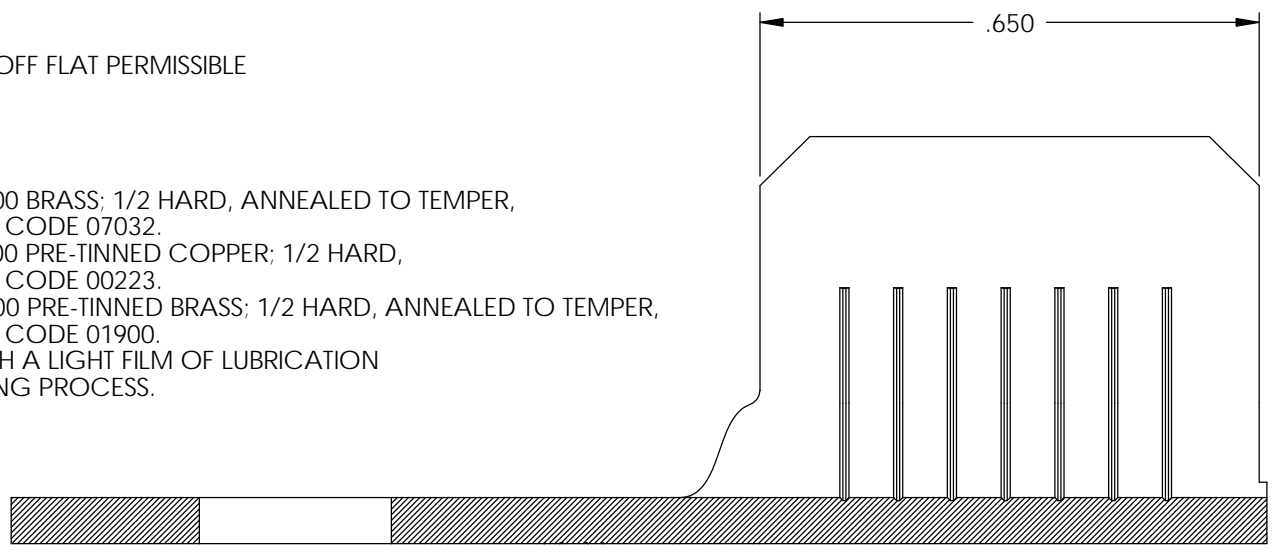


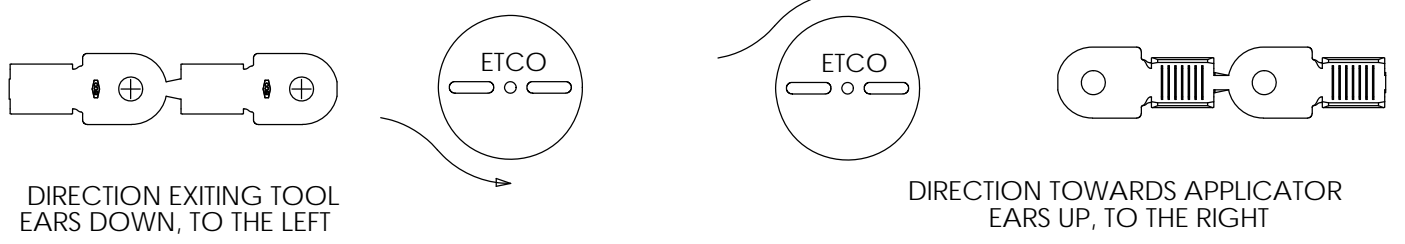
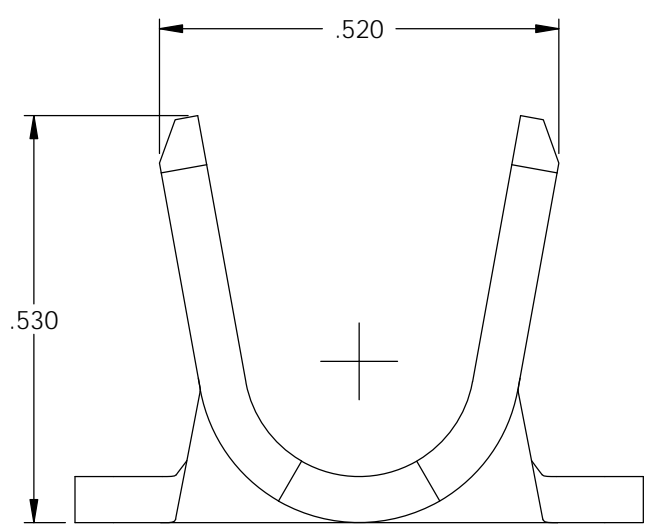
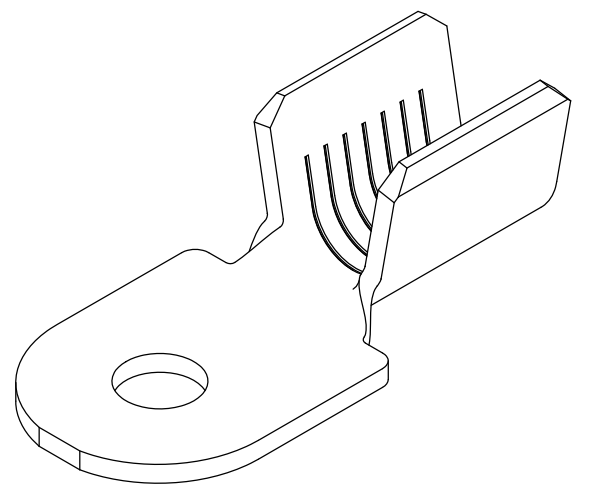
CUT-OFF FLAT PERMISSIBLE

- NOTES:
1. MATERIAL: .060 THICK C26000 BRASS; 1/2 HARD, ANNEALED TO TEMPER, PER ETCO METAL CODE 07032.
 2. MATERIAL: .060 THICK C11000 PRE-TINNED COPPER; 1/2 HARD, PER ETCO METAL CODE 00223.
 3. MATERIAL: .060 THICK C26000 PRE-TINNED BRASS; 1/2 HARD, ANNEALED TO TEMPER, PER ETCO METAL CODE 01900.
 4. PARTS MAY BE COATED WITH A LIGHT FILM OF LUBRICATION USED IN THE MANUFACTURING PROCESS.
 5. WIRE RANGE: #4-#6 AWG.



P/C	DESCRIPTION	MAT'L	DIM "X"	
02971	R551E-437-TCU	NOTE 2	Ø .437	
02972	R551E-14-TCU	NOTE 2	Ø .250	
02973	R551E-281-TCU	NOTE 2	Ø .281	
02974	R551E-350-TCU	NOTE 2	Ø .350	
02975	R551E-468-TCU	NOTE 2	Ø .468	
02976	R551E-3/8-TCU	NOTE 2	Ø .403	
02977	R551E-1/2-TCU	NOTE 2	Ø .530	X
82319	R551E-403-THB	NOTE 3	Ø .403	
82320	R551E-437-HB	NOTE 1	Ø .437	
82322	R551E-14-HB	NOTE 1	Ø .250	
82324	R551E-350-HB	NOTE 1	Ø .350	
82326	R551E-468-HB	NOTE 1	Ø .468	
82328	R551E-3/8-HB	NOTE 1	Ø .403	
82362	R551E-281-HB	NOTE 1	Ø .281	

Rev.	Description of Change/ SCN#	Date
5	TRANSFER FROM CP TO EP	6/5/03
6	SCN# 102316 SCJ	10-27-03
7	ISSUED TCU P/Cs SCJ	9-14-04
8	SCN# 103196 SCJ	6-1-06
9	SCN# 140243 SCJ	10-2-07
10	SCN# 140291 SCJ	11-6-07
11	ECR# 4332 SCJ	8/15/16



THIS PRINT IS THE PROPERTY OF ETCO INCORPORATED. NO PART OF THIS DESIGN MAY BE USED IN ANY WAY WITHOUT WRITTEN CONSENT FROM ETCO INCORPORATED.

UNCONTROLLED COPY

 THIRD ANGLE PROJECTION TOLERANCES UNLESS OTHERWISE SPECIFIED INCHES: .XX - ±.030 .XXX - ±.015 ANGLES: ±5°	TOOL NO. 0843	Title: RING TERMINAL	
		DO NOT SCALE DWG. Drawn By: S.JOHNSON Date: 6-5-03	Chk'd/App'd By: Scale: 4X Size: B
		Dwg. No.: R551E cust	

ETCO Incorporated
 Engineered Products
 25 Bellows Street
 Warwick, RI 02888
 Phone: (401) 467-2400
 Fax: (401) 467-9230
 www.ETCO.com