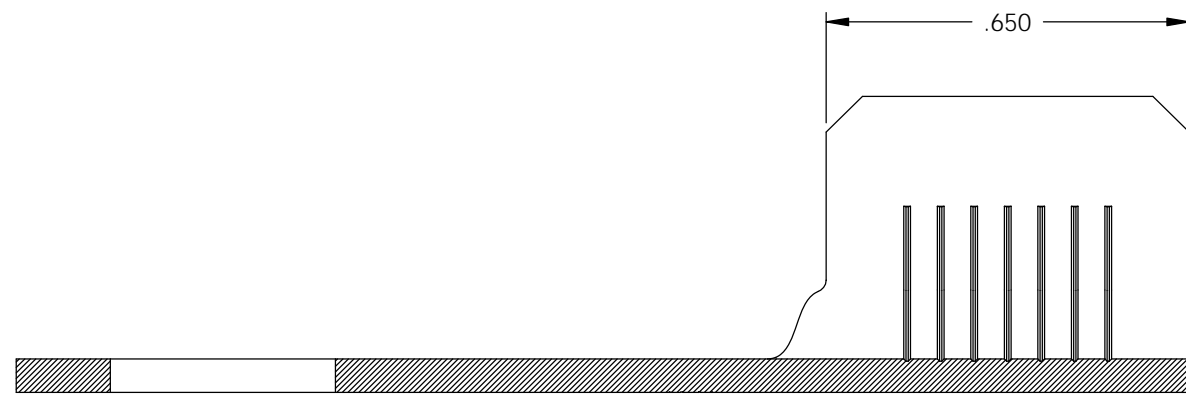
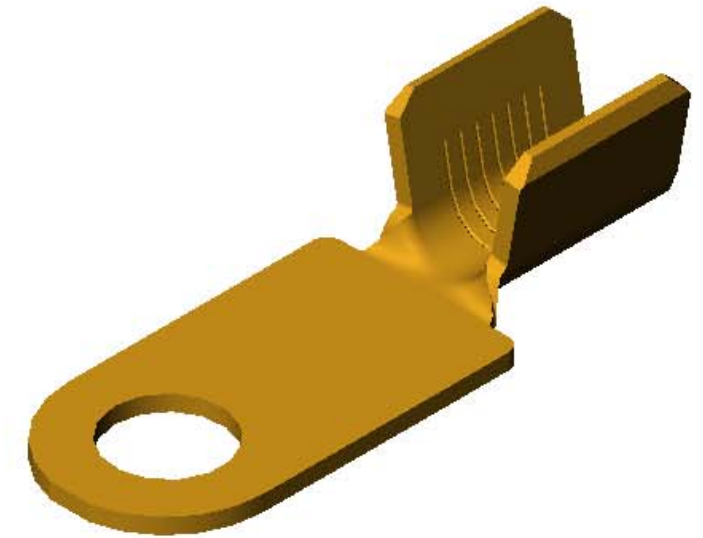
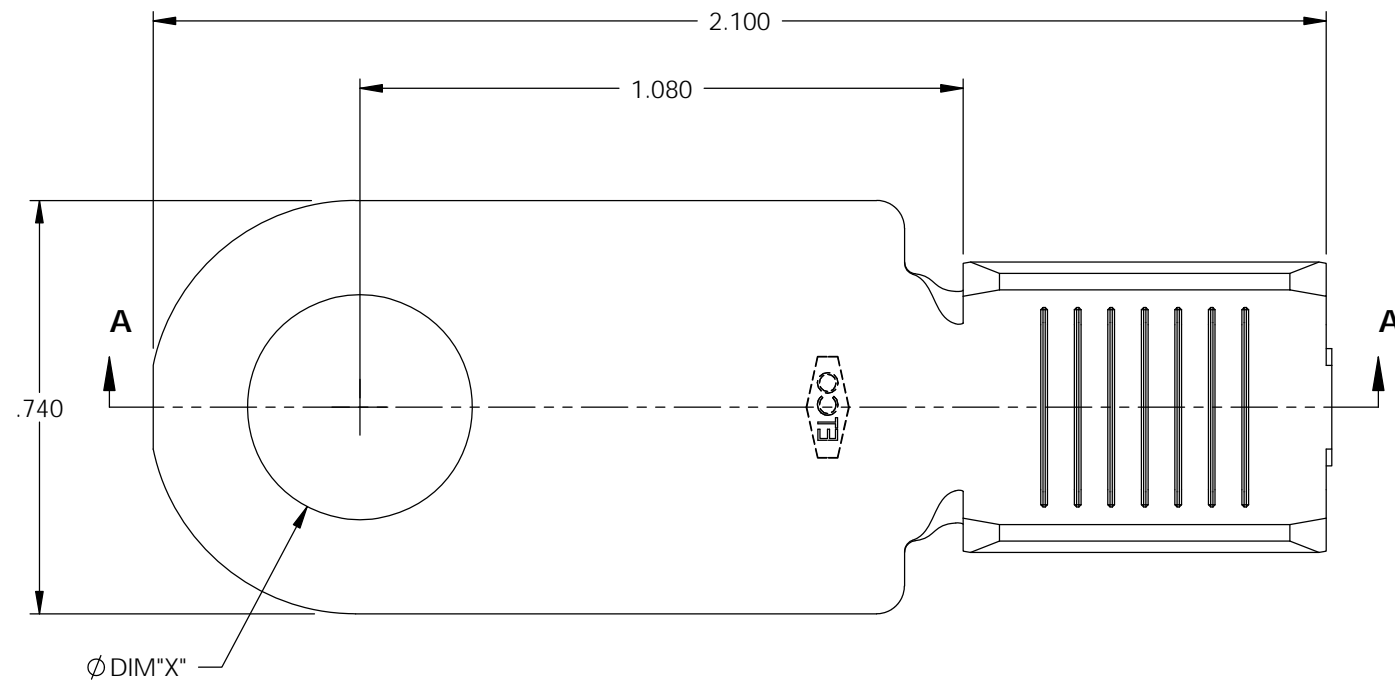


NOTES:

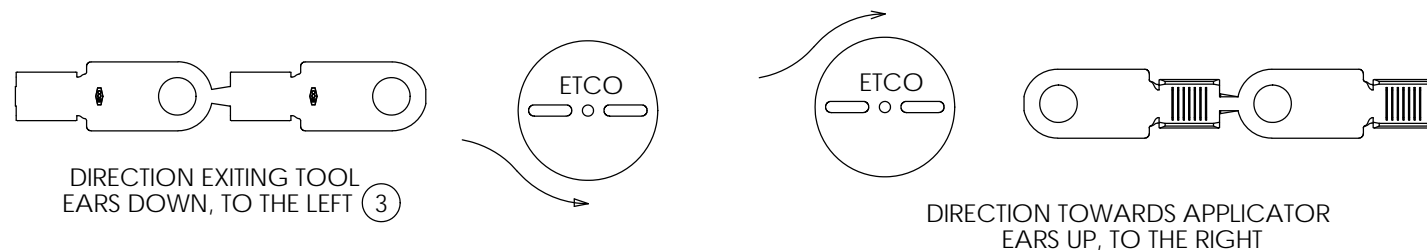
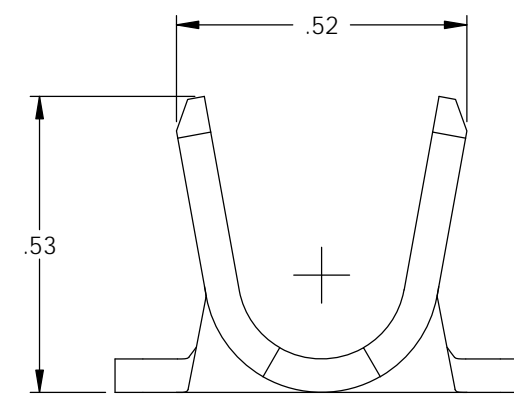
1. MATERIAL: .060 THICK C26000 BRASS; 1/2 HARD, ANNEALED TO TEMPER, PER ETCO METAL CODE 07032.
2. PARTS MAY BE COATED WITH A LIGHT FILM OF LUBRICATION USED IN THE MANUFACTURING PROCESS.
3. WIRE RANGE: #4-#6 AWG.

PART CODE	DESCRIPTION	DIM "X"	MATERIAL
82360	R554E-3/8-HB	Ø .398-.403	NOTE 1
82363 (2)	R554E-5/16 HB	Ø .323-.333	NOTE 1

Rev.	Description of Change/ SCN#	Date
1	TRANSFER FROM CP TO EP SCJ	3-25-04
2	PCA-000069 JMR	3/01/10
3	ECR# 2469 SCJ	9/05/10



SECTION A-A  
SCALE 3 : 1



THIS PRINT IS THE PROPERTY OF ETCO INCORPORATED. NO PART OF THIS DESIGN MAY BE USED IN ANY WAY WITHOUT WRITTEN CONSENT FROM ETCO INCORPORATED.

# UNCONTROLLED COPY

<p>THIRD ANGLE PROJECTION TOLERANCES UNLESS OTHERWISE SPECIFIED INCHES: .XX - ±.030 .XXX - ±.015 ANGLES: ±5°</p>	<p>TOOL NO. <b>0845</b></p>	<p>Title: RING TERMINAL</p>		
		<p>DO NOT SCALE DWG.</p>	<p>Drawn By: S. JOHNSON</p>	<p>Date: 3/25/2004</p>
<p>ETCO Incorporated Engineered Products 25 Bellows Street Warwick, RI 02888 Phone: (401) 467-2400 Fax: (401) 467-9230 www.ETCO.com</p>		<p>Chk'd/App'd By:</p>	<p>Scale: 3X</p>	<p>Size B</p>
		<p>Dwg. No.:</p>	<p><b>R554E</b></p>	