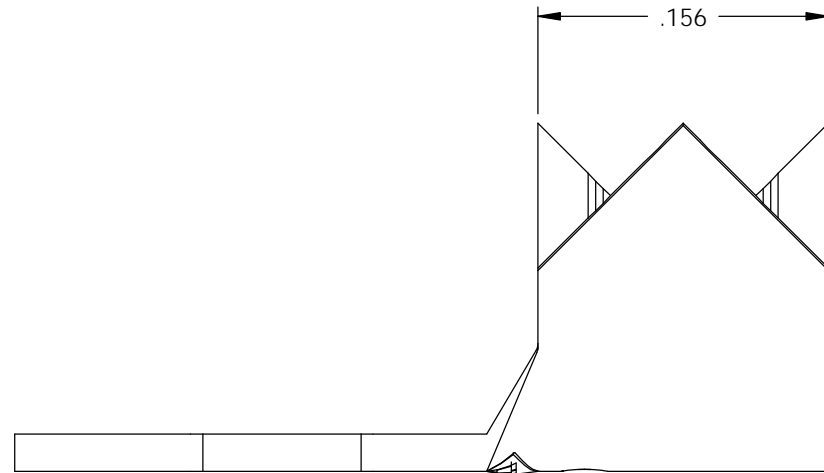
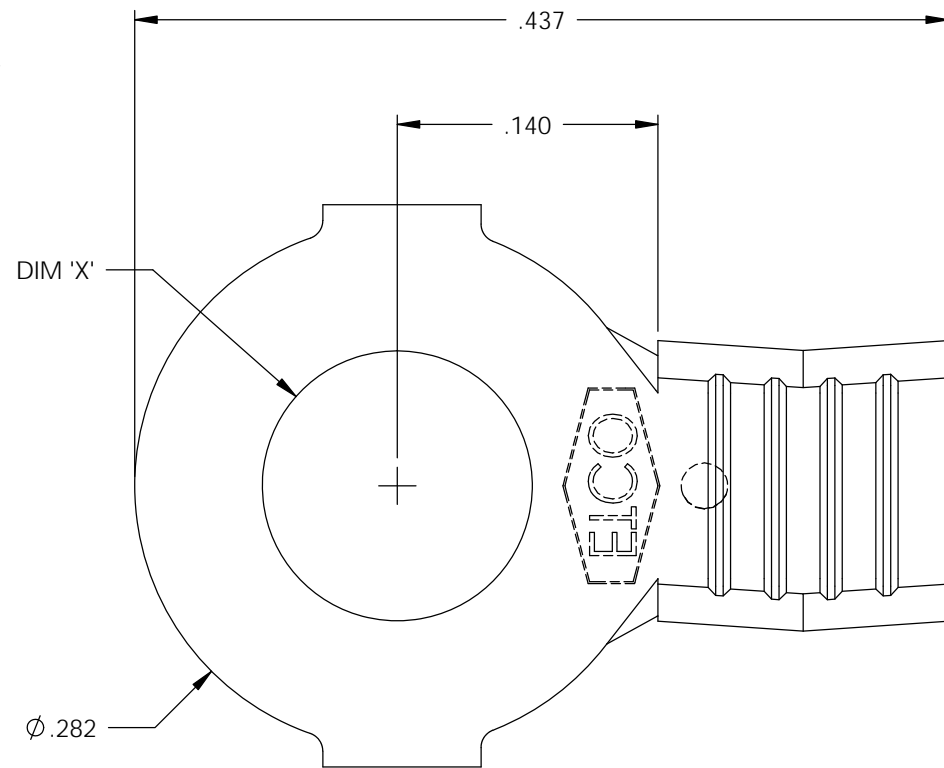


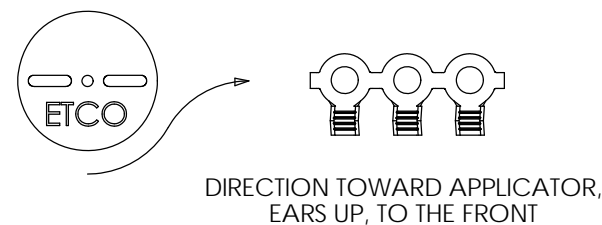
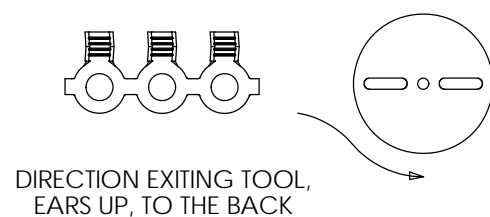
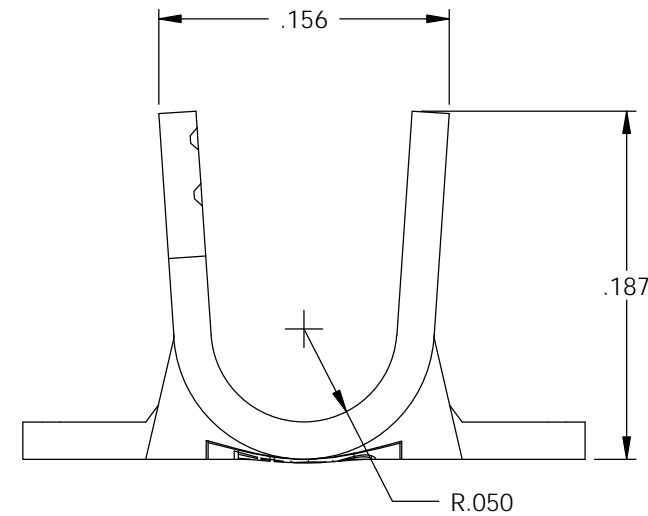
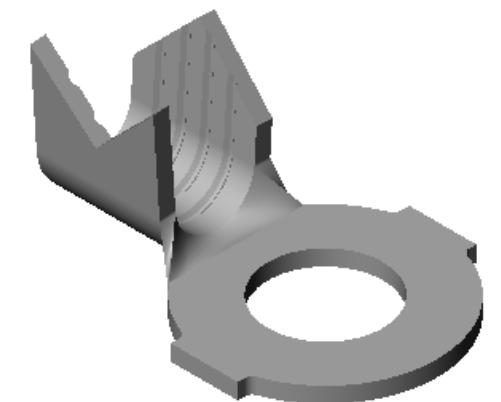
NOTE:

- 1.) MAT'L: .020 THK., BRASS, #2 TEMPER (HALF HARD), PER ETCO METAL CODE NO. 00280.
- 2.) MAT'L: .020 THK., PRE-TINNED BRASS, #2 TEMPER (HALF HARD), PER ETCO METAL CODE NO. 01350.
- 3.) MAT'L: .020 THK., PRE-NICKEL PLATED STEEL, #3 TEMPER (HALF HARD), PER ETCO METAL CODE NO. 03205.
- 4.) PARTS MAY BE COATED WITH A LIGHT FILM OF LUBRICATION USED IN THE MANUFACTURING PROCESS.
- 5.) WIRE RANGE: 18-16 AWG. (5)



P/C	DESCRIPTION	DIM 'X'	MAT'L	UL	SP
00390	R90-2-HB	Ø.093	NOTE 1	X	X
00400	R90-2-THB	Ø.093	NOTE 2	X	X
00410	R90-4-HB	Ø.119	NOTE 1	X	X
00421	R90-4-THB	Ø.119	NOTE 2	X	X
00443	R90-6-THB	Ø.145	NOTE 2	X	X
00444	R90-6-NPS	Ø.145	NOTE 3		
00445	R90-6-HB	Ø.145	NOTE 1	X	X
00446	R90-8-THB	Ø.171	NOTE 2	X	X
00450	R90-8-HB	Ø.171	NOTE 1	X	X
00451	R90-10-HB	Ø.197	NOTE 1		

Rev.	Description of Change/ SCN#	Date
2	REDRAWN ON SOLIDWORKS NO CHANGES SCJ ORG.ENG.DWG.DATE: 9-2-92	12-2-02
3	ADDED P/Cs SCN#140162 SCJ	8-20-07
4	ECR# 882 SCJ	12-5-11
5	ECR# 1425 SCJ	5/31/12



UNCONTROLLED COPY

<p>THIRD ANGLE PROJECTION TOLERANCES UNLESS OTHERWISE SPECIFIED INCHES: .XX - ±.030 .XXX - ±.015 ANGLES: ±5°</p>	<p>TOOL NO. 0014</p>	<p>Title: RING TERMINAL</p>		
		<p>DO NOT SCALE DWG.</p>	<p>Drawn By: S.JOHNSON</p>	<p>Date: 12-2-02</p>
<p>ETCO Incorporated Engineered Products 25 Bellows Street Warwick, RI 02888 Phone: (401) 467-2400 Fax: (401) 467-9230 www.ETCO.com</p>		<p>Chk'd/App'd By:</p>	<p>Scale: 10X</p>	<p>Size B</p>
		<p>Dwg. No.:</p>	<p>R90 cust</p>	