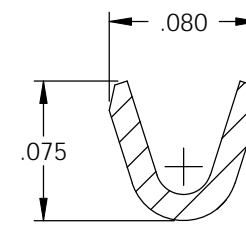
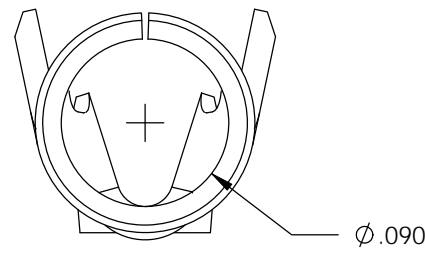
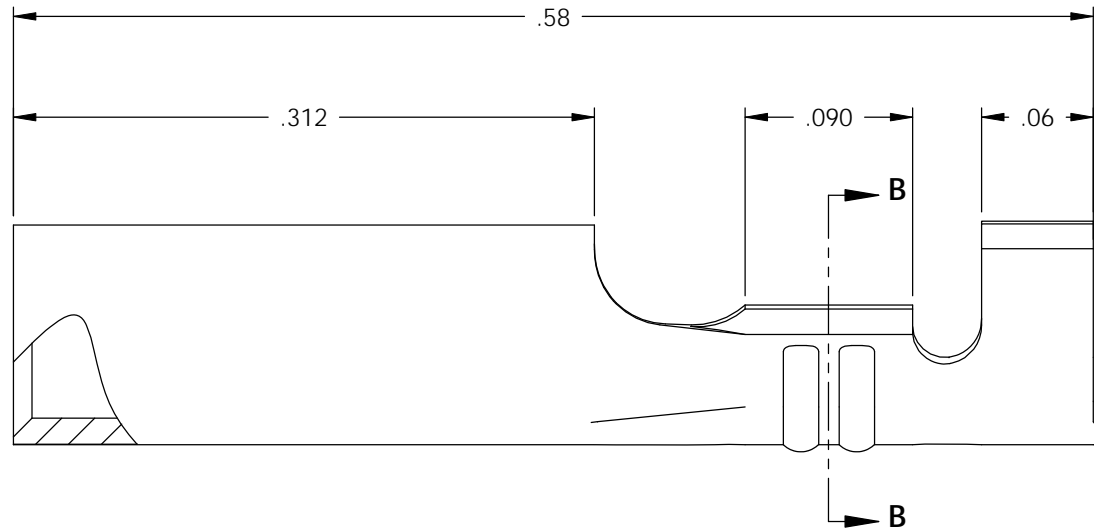
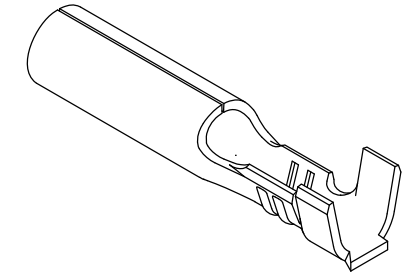
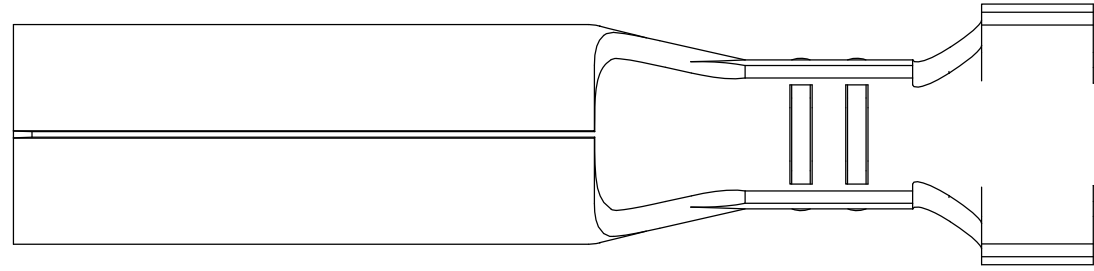


NOTE:

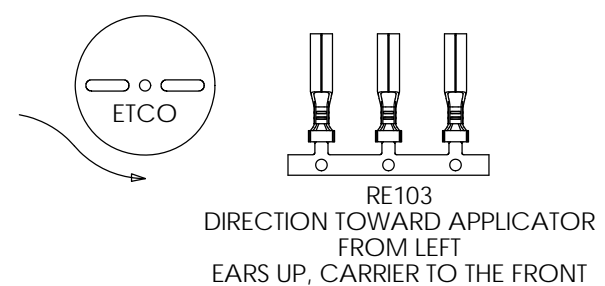
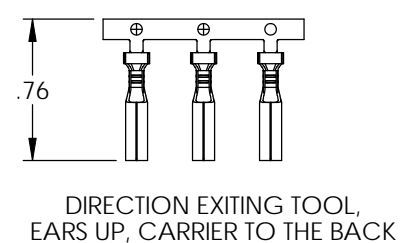
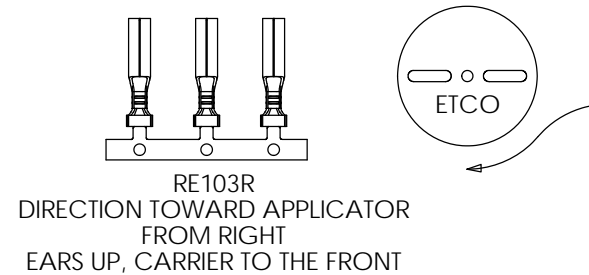
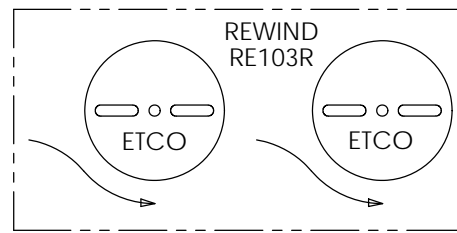
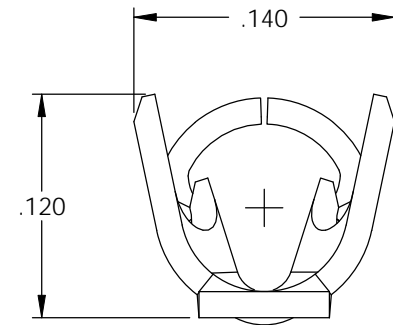
- 1.) MAT'L: .014 THK., BRASS, #3 TEMPER (THREE QUARTER HARD), PER ETCO METAL CODE NO. 00060.
- 2.) MAT'L: .014 THK., PRE-TINNED BRASS, #3 TEMPER (THREE QUARTER HARD), PER ETCO METAL CODE NO. 01080.
- 3.) PARTS MAY BE COATED WITH A LIGHT FILM OF LUBRICATION USED IN THE MANUFACTURING PROCESS.
- 4.) WIRE RANGE: 24-22 AWG.
- 5.) INSUL RANGE: ϕ .040-.090

Rev.	Description of Change/ SCN#	Date
1	REDRAWN ON SOLIDWORKS NO CHANGES SCJ ORG.ENG.DWG.DATE: 12-1-82	11-10-04
2	ADDED P/C SCN#140162 SCJ	9-20-07
3	COMPLETED P/C LIST SCJ	7-26-08

P/C	DESCRIPTION	MAT'L	REWIND
09363	RE103-HB	NOTE 1	NO
09361	RE103-R-THB	NOTE 2	YES
09359	RE103-THB	NOTE 2	NO



SECTION B-B
SCALE 10 : 1



UNCONTROLLED COPY

<p>THIRD ANGLE PROJECTION TOLERANCES UNLESS OTHERWISE SPECIFIED INCHES: .XX - \pm.030 .XXX - \pm.015 ANGLES: \pm5°</p>	<p>TOOL NO. 0737</p>	<p>Title: RECEPTACLE</p>		
		<p>ETCO Incorporated Engineered Products 25 Bellows Street Warwick, RI 02888 Phone: (401) 467-2400 Fax: (401) 467-9230 www.ETCO.com</p>	<p>DO NOT SCALE DWG.</p>	<p>Drawn By: S.JOHNSON</p>
		<p>Chk'd/App'd By:</p>	<p>Scale: 10X</p>	<p>Size: B</p>
		<p>Dwg. No.: RE103 cust</p>		