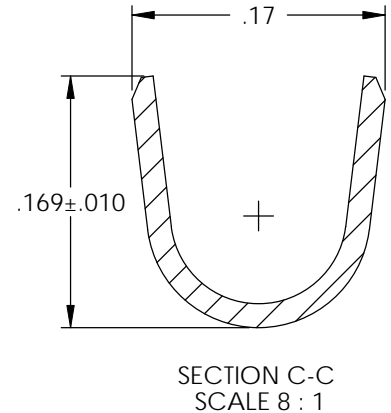
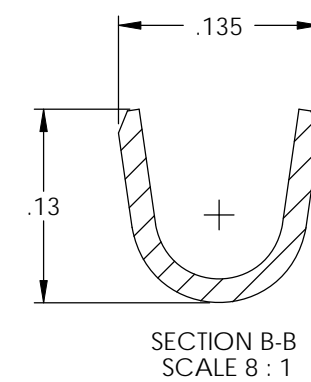
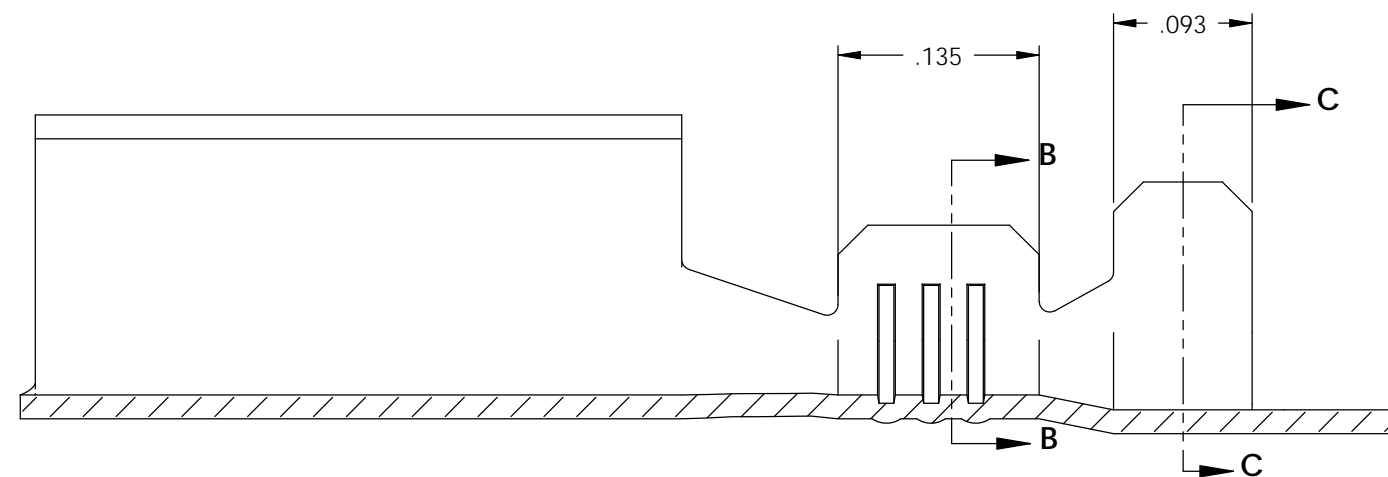
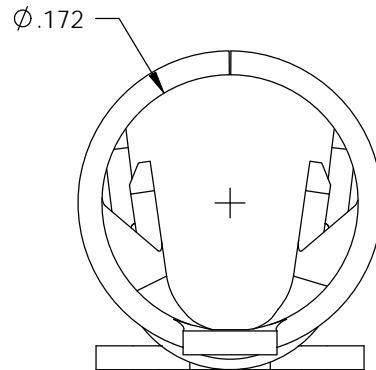
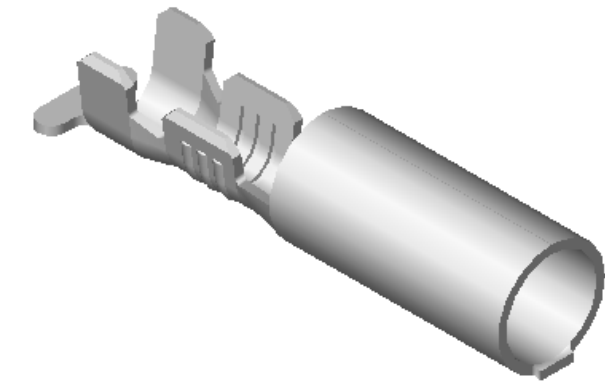
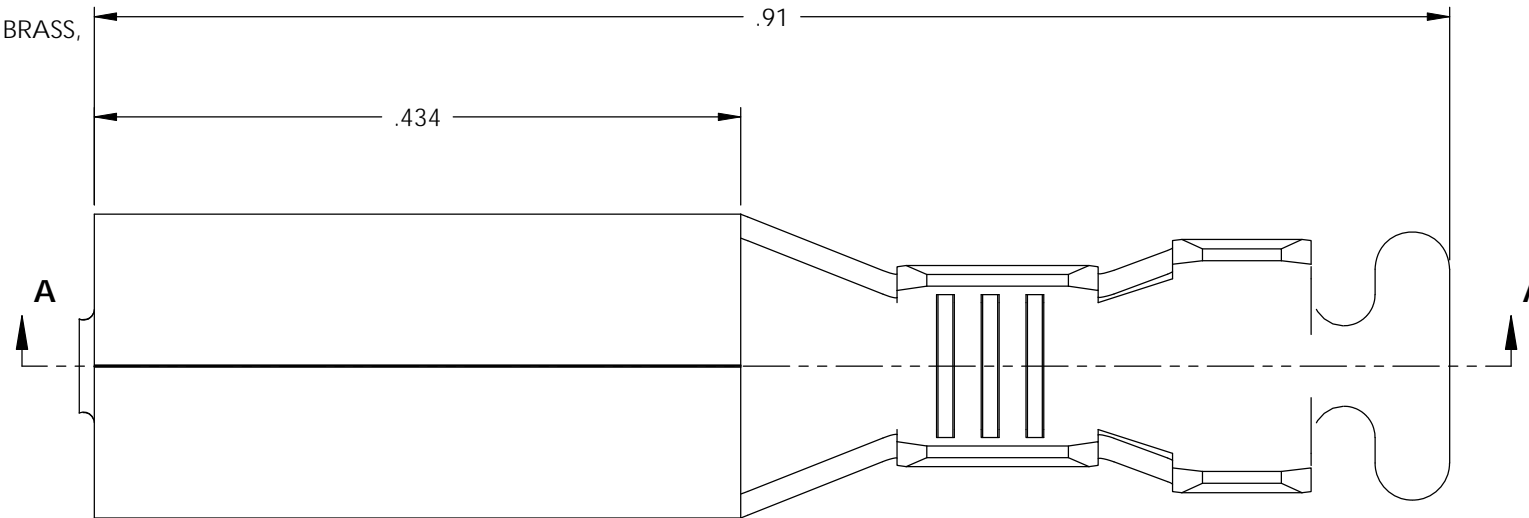


NOTE:

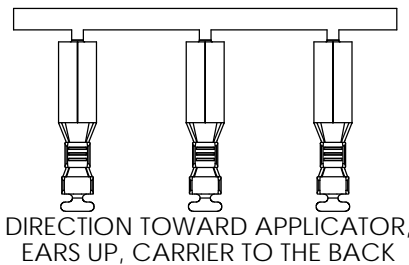
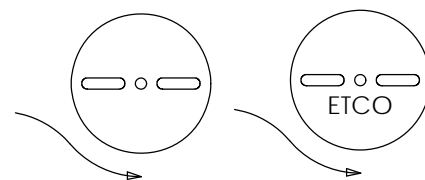
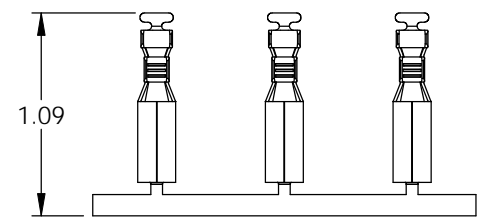
- 1.) MAT'L: .016 THK., BRASS, #8 TEMPER (SPRING HARD), PER ETCO METAL CODE NO. 00195.
- 2.) MAT'L: .016 THK., PRE-TINNED BRASS, #4 TEMPER (FULL HARD), PER ETCO METAL CODE NO. 01269.
- 3.) MAT'L: .016 THK., RICH LOW BRASS, #8 TEMPER (SPRING HARD), PER ETCO METAL CODE NO. 02181.
- 4.) MAT'L: .016 THK., PRE-TINNED RICH LOW BRASS, #8 TEMPER (SPRING HARD), PER ETCO METAL CODE NO. 02430.
- 5.) PARTS MAY BE COATED WITH A LIGHT FILM OF LUBRICATION USED IN THE MANUFACTURING PROCESS.
- 6.) WIRE RANGE: 20-16 AWG.
- 7.) INSUL RANGE: ϕ .090-.125
- 8.) TO ACCEPT A ϕ .180 PIN TERMINAL.

P/C	DESCRIPTION	MAT'L
09385	RE180-A-HB#8	NOTE 1
09387	RE180-A-TRL	NOTE 4
09390	RE180-A-THB	NOTE 2
09394	RE180-A-RL	NOTE 3

Rev.	Description of Change/ SCN#	Date
2	REDRAWN ON SOLIDWORKS NO CHANGES SCJ ORG.ENG.DWG.DATE: 11-19-69	6-17-05
3	ADDED P/Cs SCN#140162 SCJ	9-12-07



SECTION A-A
SCALE 8 : 1



UNCONTROLLED COPY

<p>THIRD ANGLE PROJECTION TOLERANCES UNLESS OTHERWISE SPECIFIED INCHES: .XX - \pm.030 .XXX - \pm.015 ANGLES: \pm5°</p>	<p>TOOL NO. 0649</p>	<p>Title: ϕ.180 RECEPTACLE</p>		
		<p>DO NOT SCALE DWG.</p>	<p>Drawn By: S.JOHNSON</p>	<p>Date: 6-15-05</p>
<p>ETCO Incorporated Engineered Products 25 Bellows Street Warwick, RI 02888 Phone: (401) 467-2400 Fax: (401) 467-9230 www.ETCO.com</p>		<p>Chk'd/App'd By:</p>	<p>Scale: 8X</p>	<p>Size B</p>
		<p>Dwg. No.: RE180-A cust</p>		