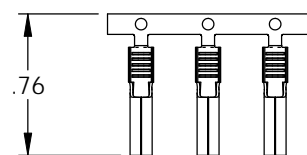
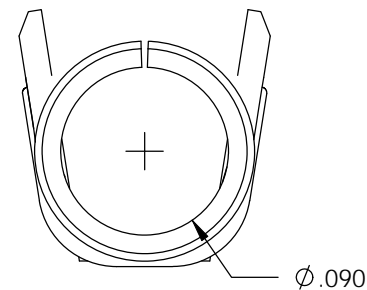
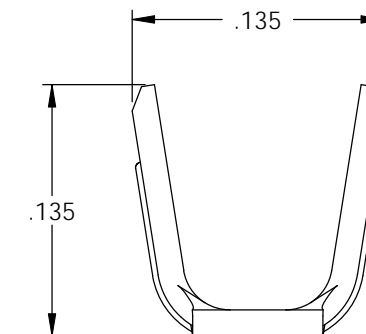
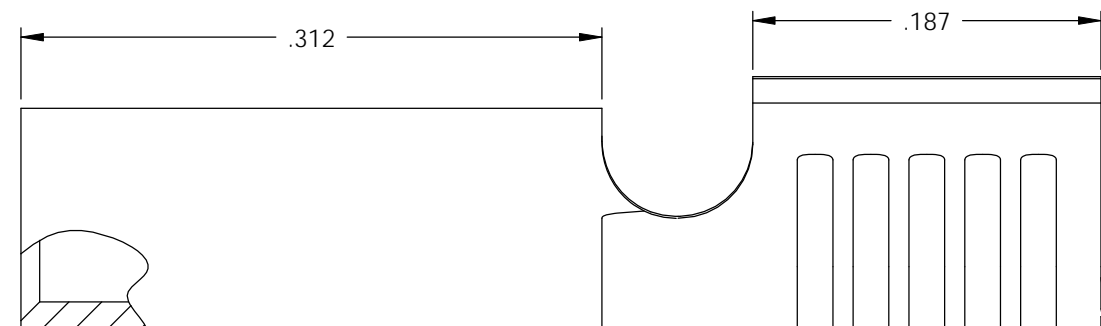
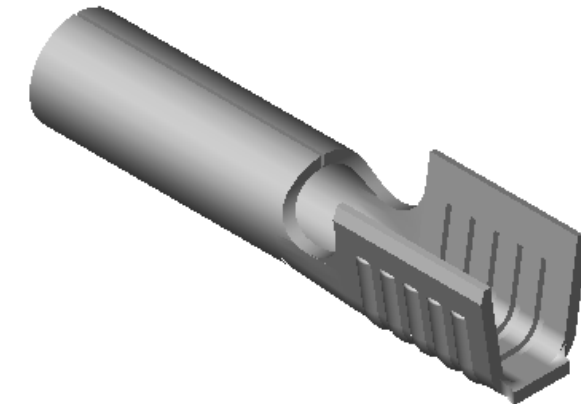
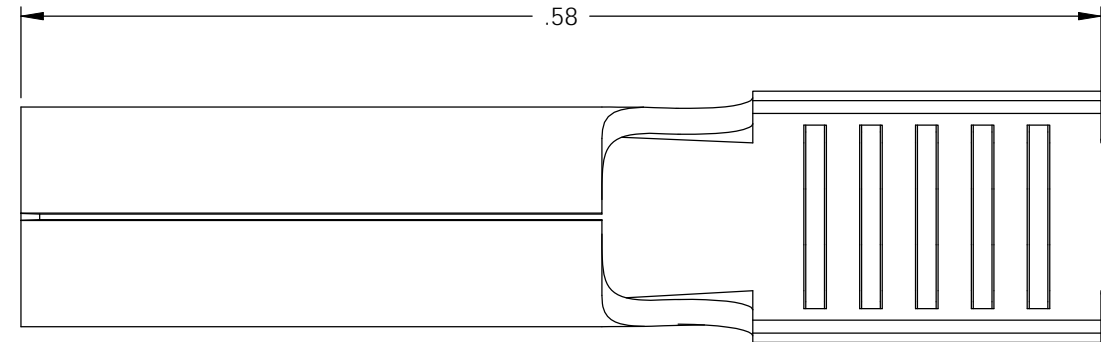


NOTE:

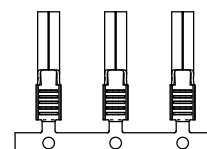
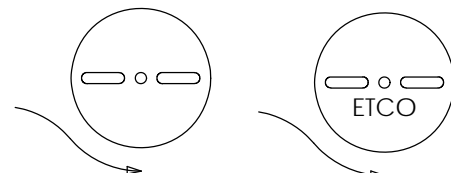
- 1.) MAT'L: .014 THK., BRASS, #3 TEMPER (THREE QUARTER HARD), PER ETCO METAL CODE NO. 00060.
- 2.) MAT'L: .014 THK., PRE-TINNED BRASS, #3 TEMPER (THREE QUARTER HARD), PER ETCO METAL CODE NO. 01080.
- 3.) PARTS MAY BE COATED WITH A LIGHT FILM OF LUBRICATION USED IN THE MANUFACTURING PROCESS.
- 4.) WIRE RANGE: 16-14 AWG.

P/C	DESCRIPTION	MAT'L
09333	RE93-2-THB	NOTE 2
09334	RE93-2-HB	NOTE 1

Rev.	Description of Change/ SCN#	Date
1	REDRAWN ON SOLIDWORKS NO CHANGES SCJ ORG.ENG.DWG.DATE: 9-16-92	11-9-04
2	ADDED P/C SCN#140162 SCJ	9-20-07



DIRECTION EXITING TOOL,  
EARS UP, CARRIER TO THE BACK



DIRECTION TOWARD APPLICATOR  
EARS UP, CARRIER TO THE FRONT

THIRD ANGLE PROJECTION  
TOLERANCES UNLESS OTHERWISE SPECIFIED  
INCHES: .XX -  $\pm .030$   
.XXX -  $\pm .015$   
ANGLES:  $\pm 5^\circ$

TOOL NO.  
**0737**



Title:

# UNCONTROLLED COPY

RECEPTACLE TERMINAL

DO NOT SCALE DWG.

Drawn By: S.JOHNSON

Date: 11-9-04

Chk'd/App'd By:

Scale:  
10X

Size  
**B**

Dwg. No.:

**RE93-2 cust**