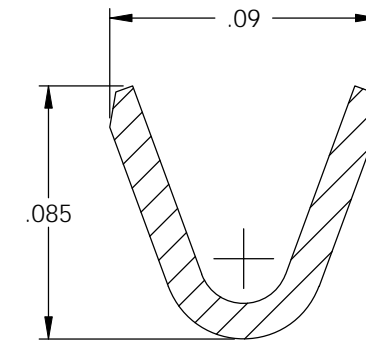
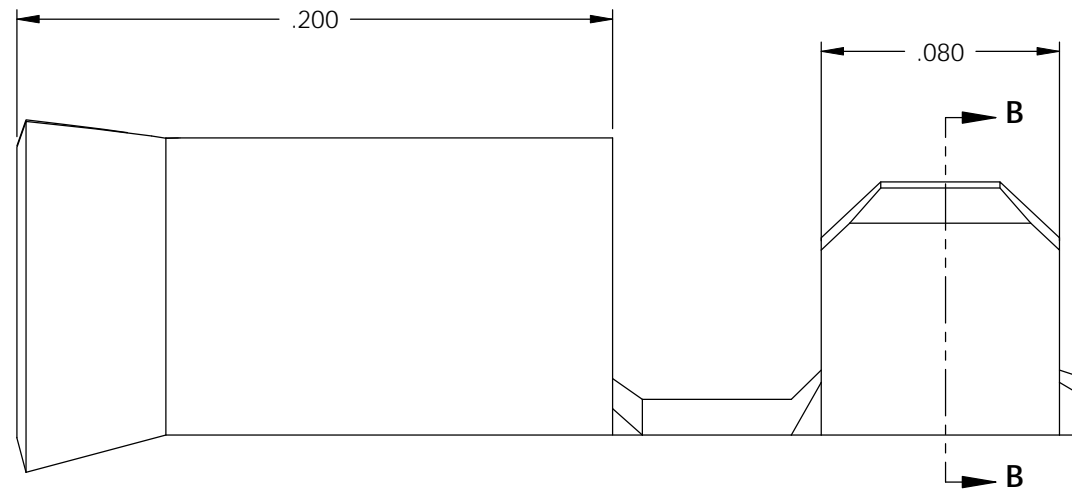
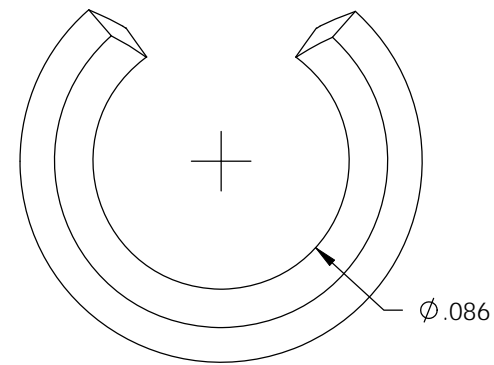
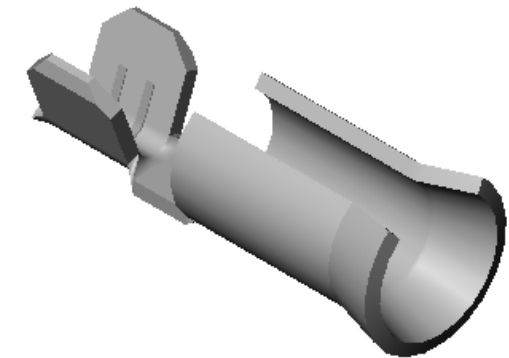
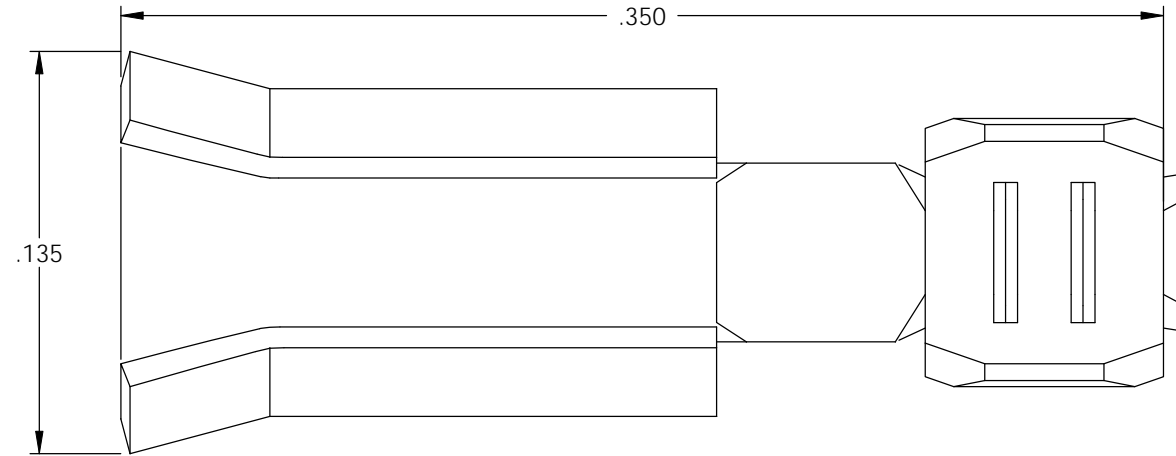


NOTE:

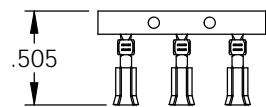
- 1.) MAT'L: .012 THK., BRASS, #3 TEMPER (3/4 HARD), PER ETCO METAL CODE NO. 05011.
- 2.) MAT'L: .012 THK., PRE-TINNED BRASS, #4 TEMPER (FULL HARD), PER ETCO METAL CODE NO. 01073.
- 3.) PARTS MAY BE COATED WITH A LIGHT FILM OF LUBRICATION USED IN THE MANUFACTURING PROCESS.
- 4.) WIRE RANGE: 20-22 AWG.

P/C	DESCRIPTION	MAT'L
09348	RE93F-HB	NOTE 1
09352	RE93F-THB	NOTE 2

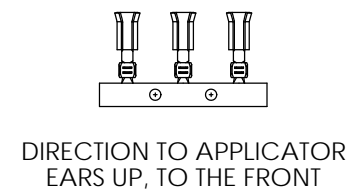
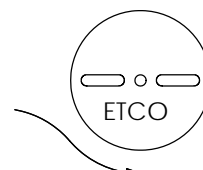
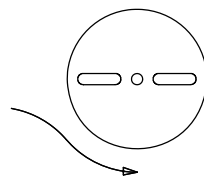
Rev.	Description of Change/ SCN#	Date
2	REDRAWN ON SOLIDWORKS NO CHANGES SCJ ORG.ENG.DWG.DATE: 1-4-93	7-21-05
3	ADDED P/C SCN#140162 SCJ	8-23-07



SECTION B-B
SCALE 16 : 1



DIRECTION EXITING TOOL,
EARS UP, TO THE BACK



UNCONTROLLED COPY

<p>THIRD ANGLE PROJECTION TOLERANCES UNLESS OTHERWISE SPECIFIED INCHES: .XX - ±.030 .XXX - ±.015 ANGLES: ±5°</p>	<p>TOOL NO. 0181</p>	<p>Title: ϕ.093 RECEPTACLE</p>		
		<p>DO NOT SCALE DWG.</p>	<p>Drawn By: S.JOHNSON</p>	<p>Date: 7-21-05</p>
<p>ETCO Incorporated Engineered Products 25 Bellows Street Warwick, RI 02888 Phone: (401) 467-2400 Fax: (401) 467-9230 www.ETCO.com</p>		<p>Chk'd/App'd By:</p>	<p>Scale: 16X</p>	<p>Size B</p>
		<p>Dwg. No.: RE93F cust</p>		