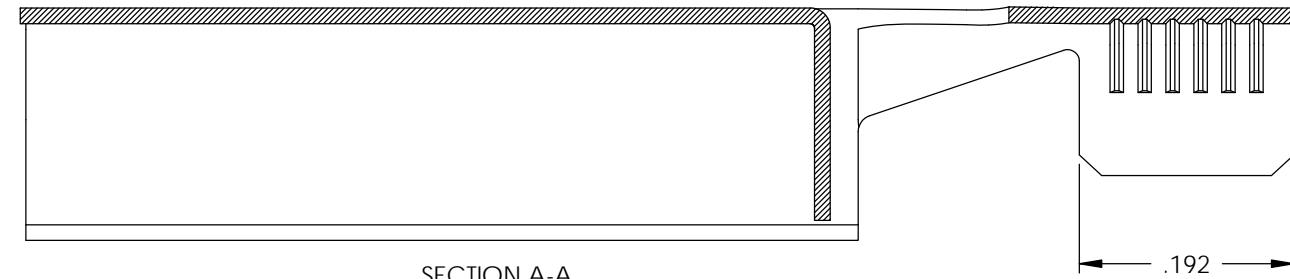


NOTES:

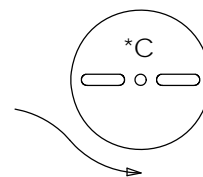
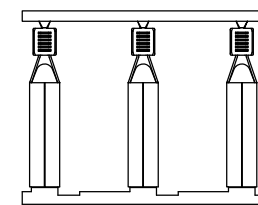
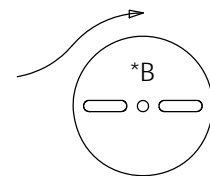
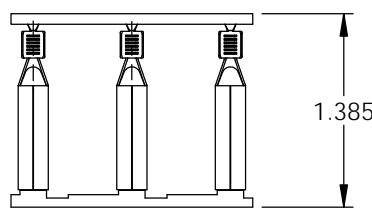
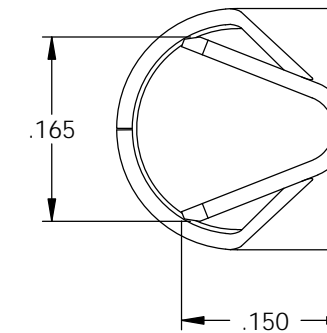
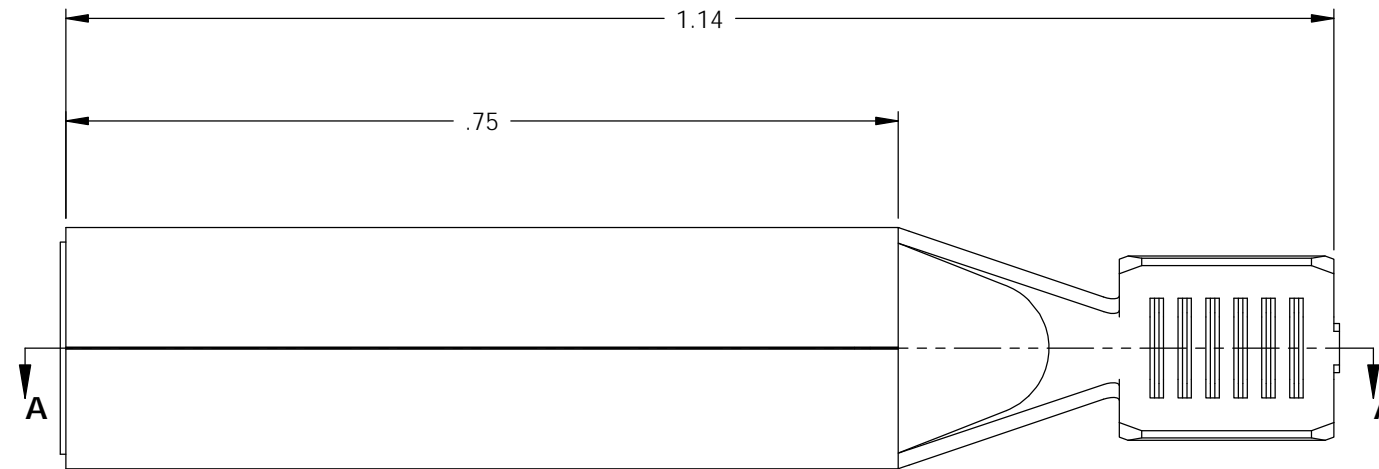
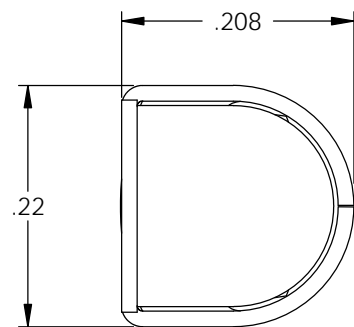
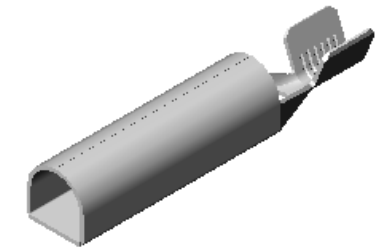
1. MATERIAL: .014 THICK C26000 BRASS  
1/2 HARD, ANNEALED TO TEMPER,  
PER ETCO METAL CODE 00059.
2. MATERIAL: .014 THICK C26000 PRE-TINNED BRASS  
1/2 HARD, ANNEALED TO TEMPER,  
PER ETCO METAL CODE 01082.
3. PARTS MAY BE COATED WITH A LIGHT FILM OF LUBRICATION  
USED IN THE MANUFACTURING PROCESS.
4. WIRE RANGE: #12-#18 AWG.
5. TO ACCEPT A  $\phi$ .187 PIN.
6. FOR REWIND INSTRUCTIONS SEE PR-3-07.

P/C	DESCRIPTION (2)	MAT'L	REWIND
09413	RED187F-B-THB	NOTE 2	NO
09415	RED187F-BRA-THB	NOTE 2	YES
09417	RED187F-BRA-HB	NOTE 1	YES
09452	RED187F-C-HB	NOTE 1	NO
09904	RED187F-CRA-HB	NOTE 1	YES
14063	RED187F-B-HB	NOTE 1	NO

Rev.	Description of Change/ SCN#	Date
1	TRANSFERED FROM CP SCJ	8-18-08
2	ECR# 816 SCJ	11-4-11



SECTION A-A  
SCALE 6 : 1



DIRECTION EXITING TOOL  
EARS UP, TO THE BACK  
SEE NOTE 6

DIRECTION EXITING TOOL  
EARS UP, TO THE BACK  
SEE NOTE 6

# UNCONTROLLED COPY

<p>THIRD ANGLE PROJECTION TOLERANCES UNLESS OTHERWISE SPECIFIED INCHES: .XX - <math>\pm</math>.030 .XXX - <math>\pm</math>.015 ANGLES: <math>\pm 5^\circ</math></p>	TOOL NO. <b>0818</b>	Title: <b>FEMALE RECEPTACLE</b>		
	<p>ETCO Incorporated Engineered Products 25 Bellows Street Warwick, RI 02888 Phone: (401) 467-2400 Fax: (401) 467-9230 www.ETCO.com</p>	DO NOT SCALE DWG.	Drawn By: <b>S.JOHNSON</b>	Date: <b>8-18-08</b>
Dwg. No.: <b>RED187F cust</b>		Scale: <b>6X</b>	Size: <b>B</b>	