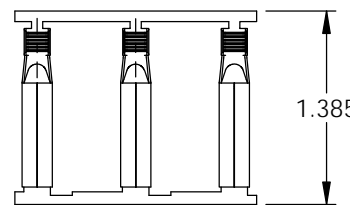
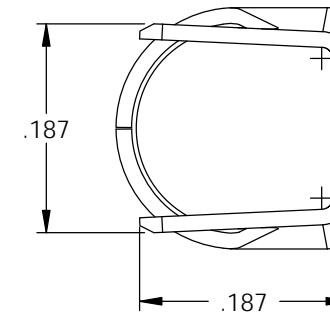
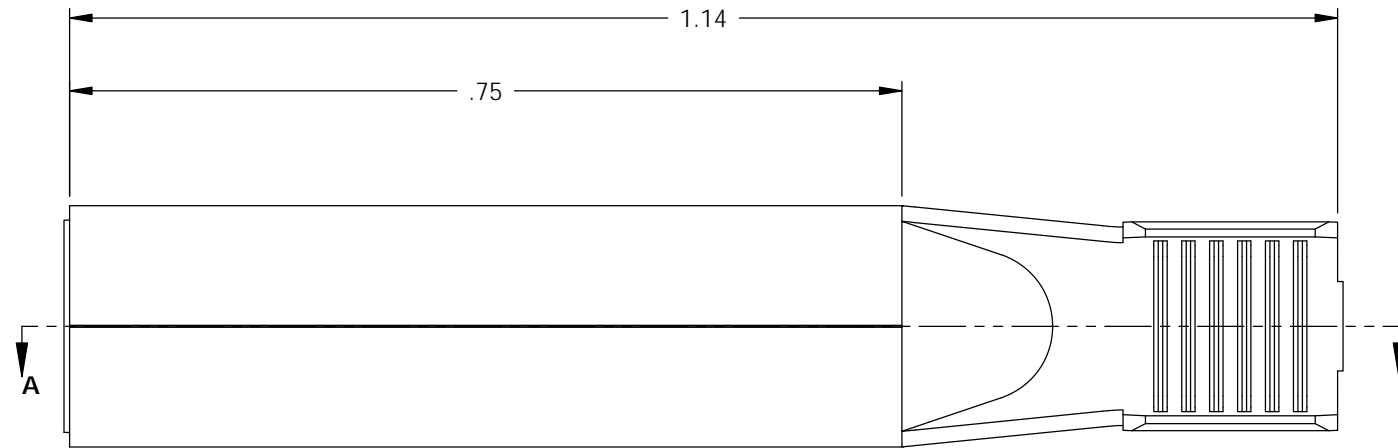
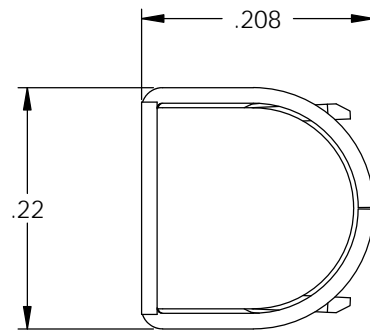
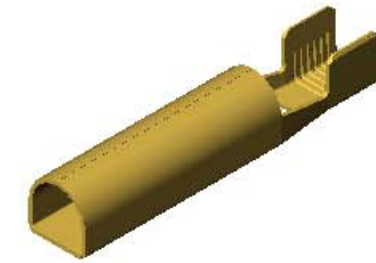
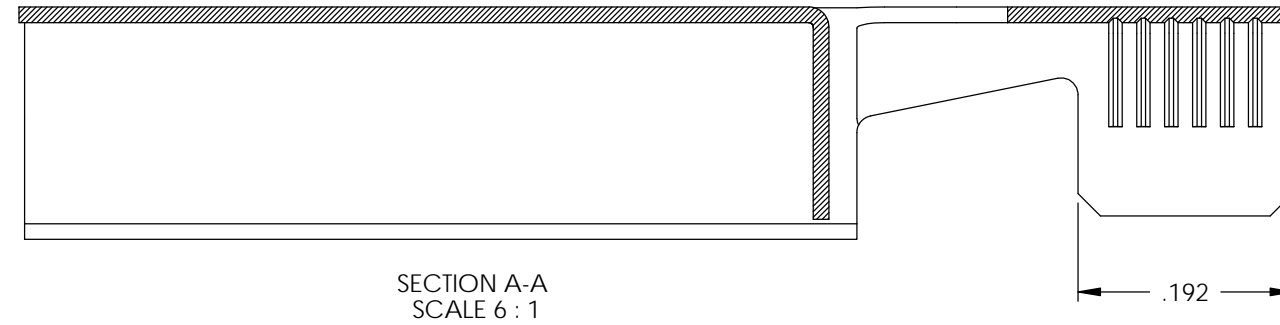


NOTES:

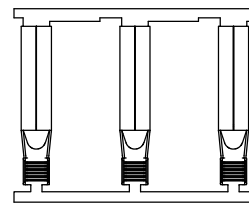
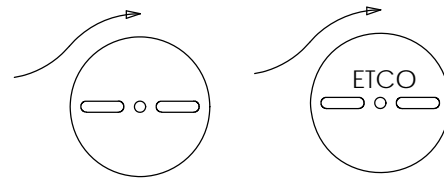
1. MATERIAL: .014 THICK C26000 BRASS  
1/2 HARD, ANNEALED TO TEMPER,  
PER ETCO METAL CODE 00059.
2. PARTS MAY BE COATED WITH A LIGHT FILM OF LUBRICATION  
USED IN THE MANUFACTURING PROCESS.
3. WIRE RANGE: #10-#12 AWG.
4. TO ACCEPT A  $\phi$ .187 PIN.

P/C	DESCRIPTION (2)	MAT'L
14023	RED187F10-B-HB	NOTE 1

Rev.	Description of Change/ SCN#	Date
1	TRANSFERED FROM CP SCJ	8-19-08
2	ECR# 816 SCJ	11-4-11



DIRECTION EXITING TOOL  
EARS UP, TO THE BACK



DIRECTION TOWARDS APPLICATOR  
EARS UP, TO THE FRONT

# UNCONTROLLED COPY

<p>THIRD ANGLE PROJECTION TOLERANCES UNLESS OTHERWISE SPECIFIED INCHES: .XX - <math>\pm</math>.030 .XXX - <math>\pm</math>.015 ANGLES: <math>\pm</math>5°</p>	<p>TOOL NO. <b>0818</b></p>	<p>Title: <b>FEMALE RECEPTACLE</b></p>		
		<p>DO NOT SCALE DWG.</p>	<p>Drawn By: <b>S.JOHNSON</b></p>	<p>Date: <b>8-19-08</b></p>
<p>ETCO Incorporated Engineered Products 25 Bellows Street Warwick, RI 02888 Phone: (401) 467-2400 Fax: (401) 467-9230 www.ETCO.com</p>		<p>Chk'd/App'd By:</p>	<p>Scale: <b>6X</b></p>	<p>Size <b>B</b></p>
		<p>Dwg. No.: <b>RED187F10 cust</b></p>		