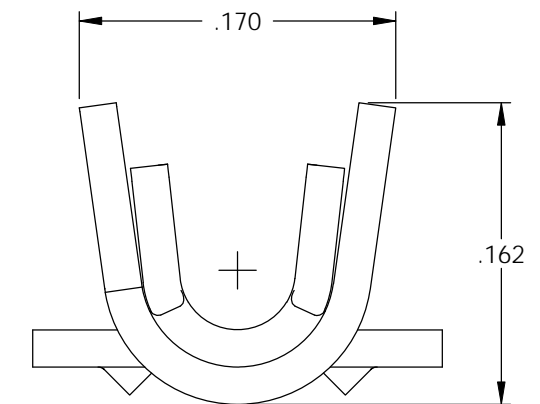
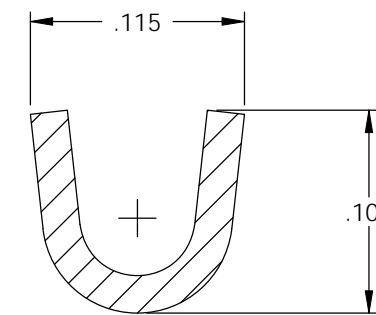
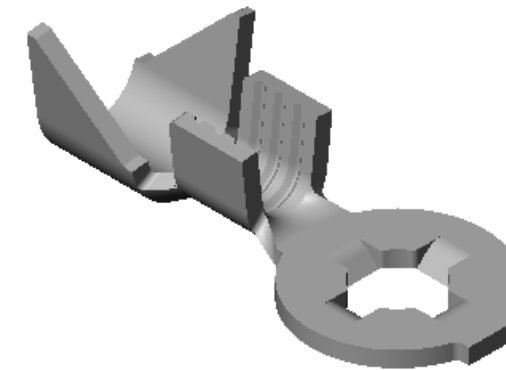
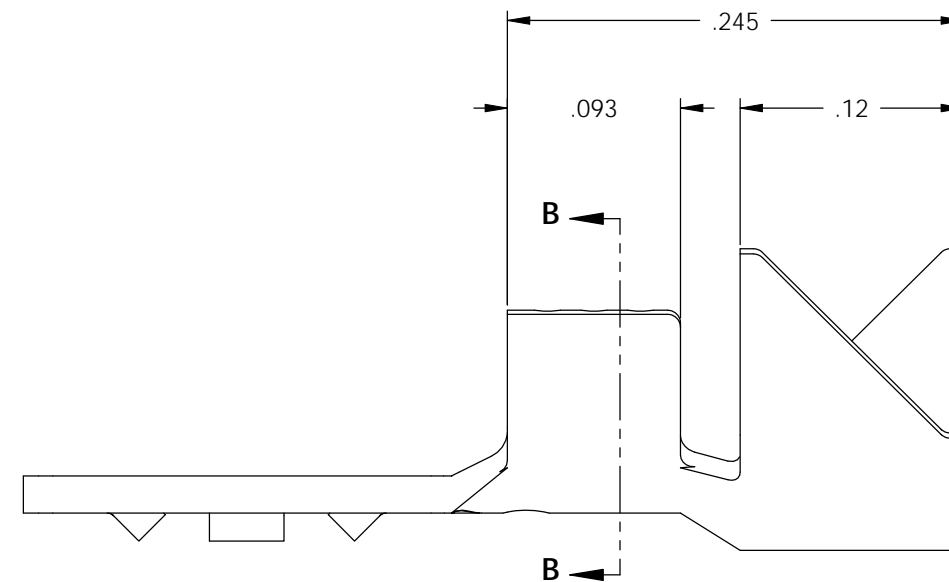
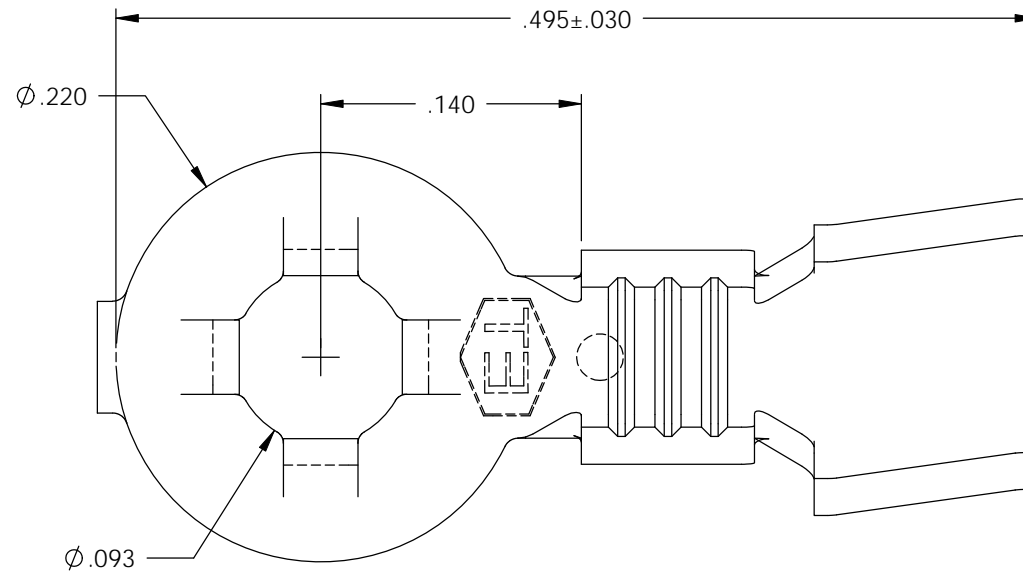


NOTE:

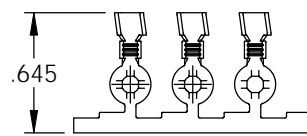
- 1.) MAT'L: .020 THK., BRASS, #2 TEMPER (HALF HARD), PER ETCO METAL CODE NO. 00330.
- 2.) MAT'L: .020 THK., PRE-TINNED BRASS, #2 TEMPER (HALF HARD), PER ETCO METAL CODE NO. 01410.
- 3.) PARTS MAY BE COATED WITH A LIGHT FILM OF LUBRICATION USE IN THE MANUFACTURING PROCESS.
- 4.) WIRE RANGE: 24-20 AWG.
- 5.) INSUL RANGE: ϕ .060-.075

Rev.	Description of Change/ SCN#	Date
1	SCN# 102077 SCJ ORG.ENG.DWG.DATE: 11-15-01	11-26-02

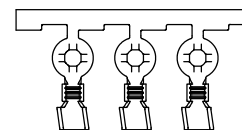
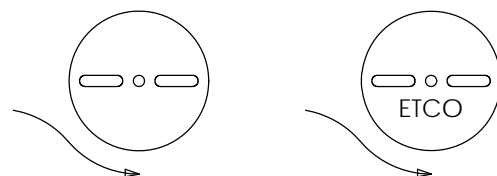
P/C	DESCRIPTION	MAT'L	UL	SP
00141	RL16-2-HB	NOTE 1	X	X
00142	RL16-2-THB	NOTE 2	X	X



SECTION B-B
SCALE 10 : 1



DIRECTION EXITING TOOL,
EARS UP, CARRIER TO THE FRONT



DIRECTION TOARD APPLICATOR,
EARS UP, CARRIER TO THE BACK

THIS PRINT IS THE PROPERTY OF ETCO INCORPORATED. NO PART OF THIS DESIGN MAY BE USED IN ANY WAY WITHOUT WRITTEN CONSENT FROM ETCO INCORPORATED.

UNCONTROLLED COPY

<p>THIRD ANGLE PROJECTION TOLERANCES UNLESS OTHERWISE SPECIFIED INCHES: .XX - \pm.030 .XXX - \pm.015 ANGLES: \pm5°</p>	TOOL NO. 0005	Title: LOCKING RING TERMINAL		
		DO NOT SCALE DWG.	Drawn By: S.JOHNSON	Date: 11-26-02
ETCO Incorporated Engineered Products 25 Bellows Street Warwick, RI 02888 Phone: (401) 467-2400 Fax: (401) 467-9230 www.ETCO.com		Chk'd/App'd By:	Scale: 10X	Size B
		Dwg. No.: RL16-2 cust		