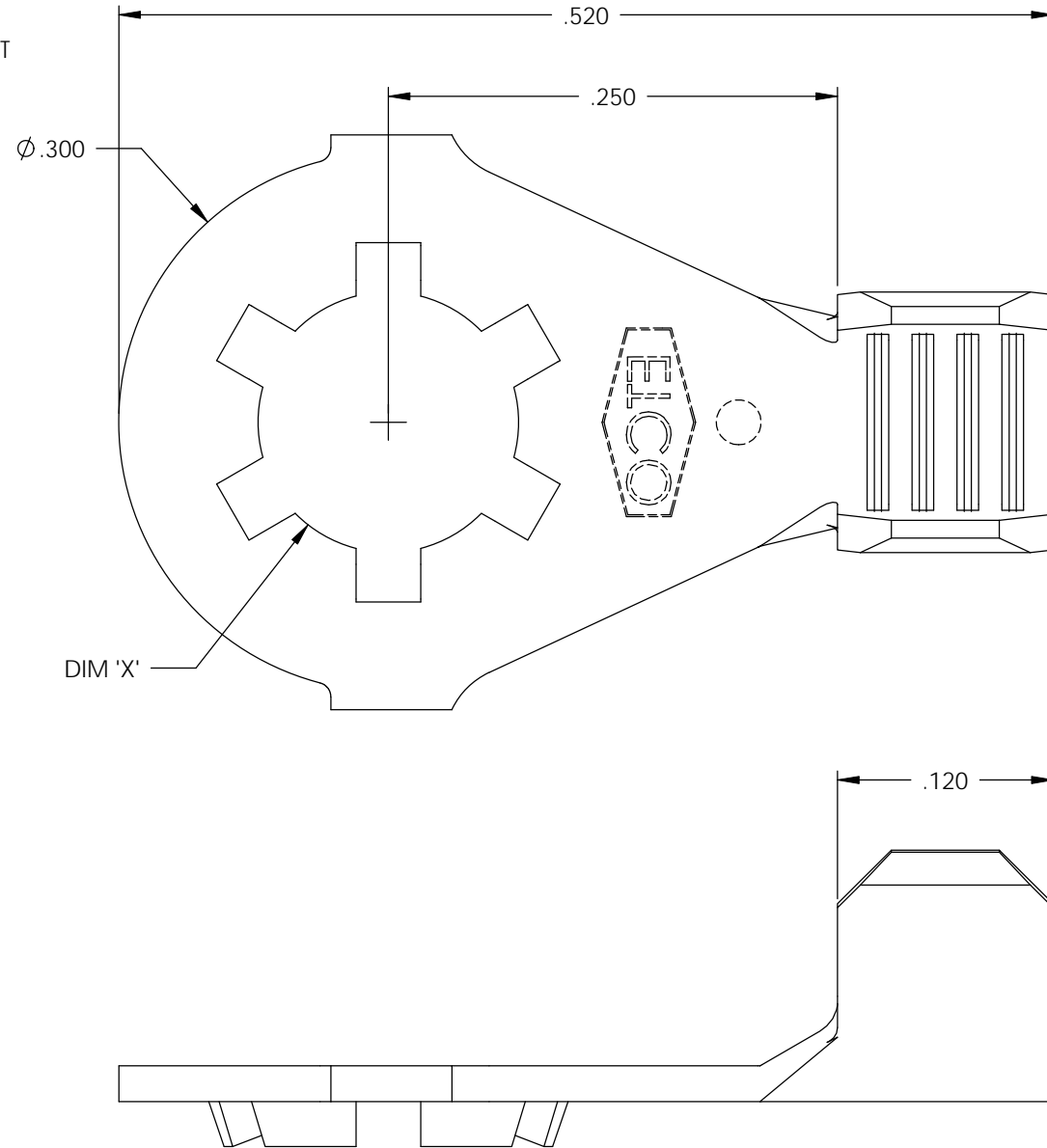
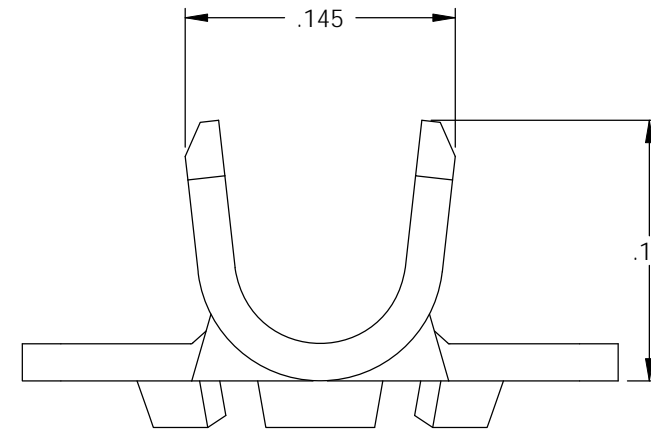
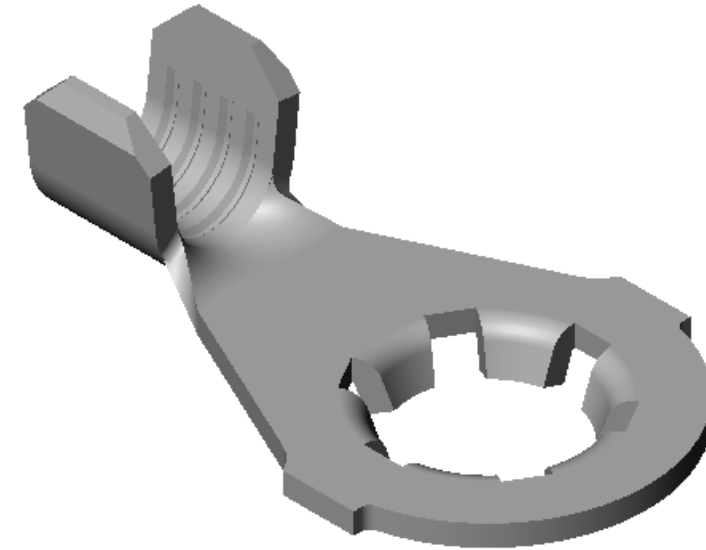


- NOTE:
- 1.) MAT'L: .020 THK., BRASS, #2 TEMPER (HALF HARD), PER ETCO METAL CODE NO. 00310.
 - 2.) MAT'L: .020 THK., PRE-TINNED BRASS, #2 TEMPER (HALF HARD), PER ETCO METAL CODE NO. 01390.
 - 3.) MAT'L: .020 THK., PRE-NICKEL PLATED STEEL, #3 TEMPER (QUARTER HARD), PER ETCO METAL CODE NO. 03220.
 - 4.) PARTS MAY BE COATED WITH A LIGHT FILM OF LUBRICATION USED IN THE MANUFACTURING PROCESS.
 - 5.) WIRE RANGE: 20-16 AWG.

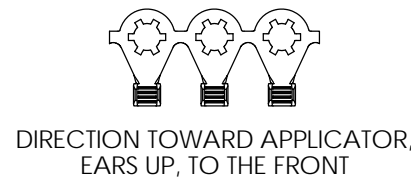
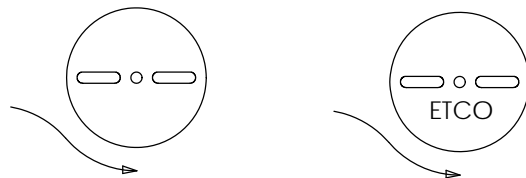


| P/C | DESCRIPTION | DIM 'X' | MAT'L | UL | SP |
|-------|-------------|---------|--------|----|----|
| 00970 | RL176-6-THB | Ø .145 | NOTE 2 | X | X |
| 00971 | RL176-6-HB | Ø .145 | NOTE 1 | X | X |
| 00976 | RL176-6-NPS | Ø .145 | NOTE 3 | | |

| Rev. | Description of Change/ SCN# | Date |
|------|---|---------|
| 1 | REDRAWN ON SOLIDWORKS NO CHANGES SCJ ORG.ENG.DWG.DATE: 1-6-93 | 1-10-03 |
| 2 | ADDED P/C SCN#140162 SCJ | 8-27-07 |



UNCONTROLLED COPY



| | | | | |
|---|---------------------------------|--|----------------------------|--------------------------|
| <p>THIRD ANGLE PROJECTION TOLERANCES UNLESS OTHERWISE SPECIFIED INCHES: .XX - ±.030 .XXX - ±.015 ANGLES: ±5°</p> | <p>TOOL NO. 0475</p> | <p>Title: RING TERMINAL</p> | | |
| | | <p>DO NOT SCALE DWG.</p> | <p>Drawn By: S.JOHNSON</p> | <p>Date: 1-10-03</p> |
| <p>ETCO Incorporated Engineered Products 25 Bellows Street Warwick, RI 02888 Phone: (401) 467-2400 Fax: (401) 467-9230 www.ETCO.com</p> | | <p>Chk'd/App'd By:</p> | <p>Scale: 10X</p> | <p>Size B</p> |
| <p>Dwg. No.:</p> | | | <p>RL176 cust</p> | |