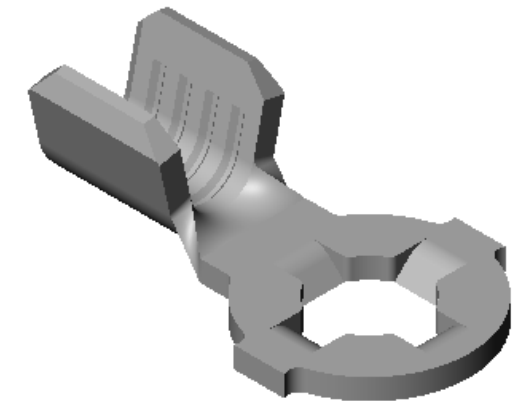
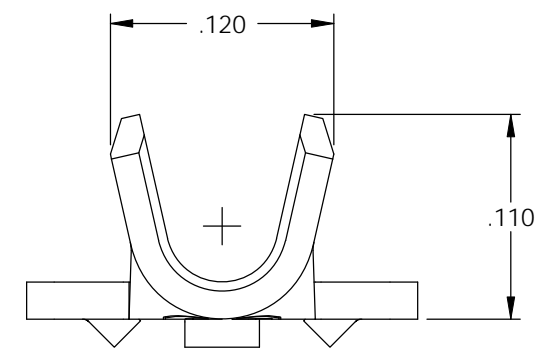
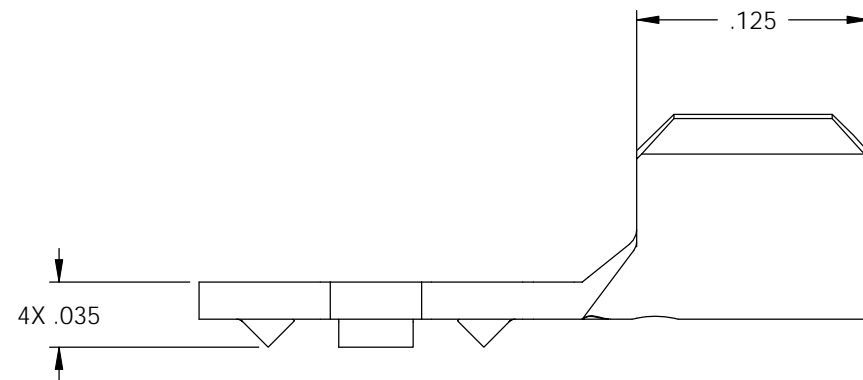
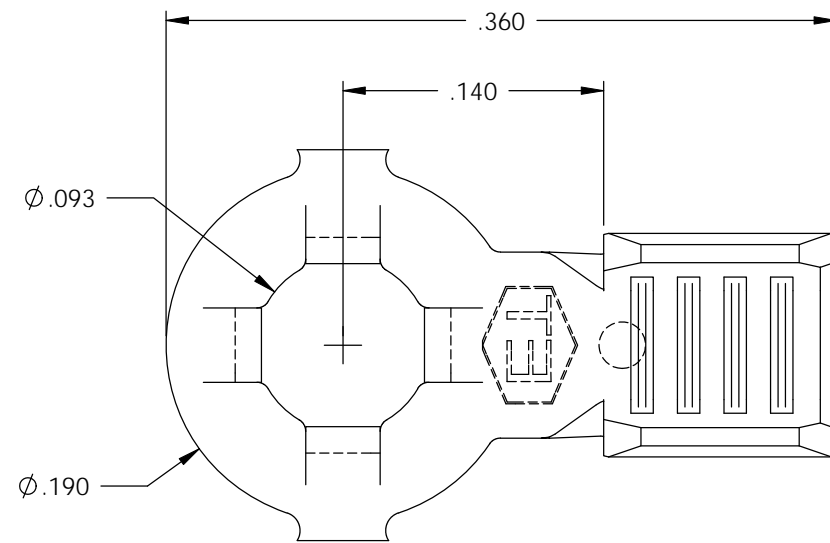



NOTE:

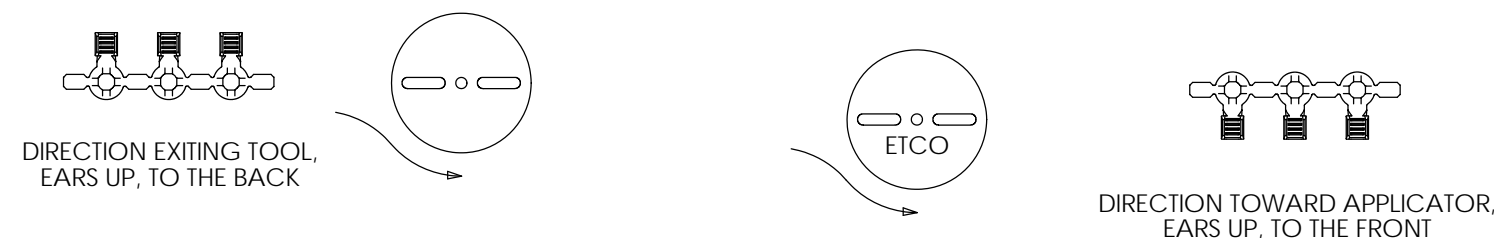
- 1.) MAT'L: .020 THK., BRASS, #2 TEMPER (HALF HARD), PER ETCO METAL CODE NO. 00245.
- 2.) MAT'L: .020 THK., PRE-TINNED BRASS, #2 TEMPER (HALF HARD), PER ETCO METAL CODE NO. 01310.
- 3.) MAT'L: .020 THK., PRE-NICKEL PLATED STEEL, #3 TEMPER (QUARTER HARD), PER ETCO METAL CODE NO. 03180.
- 4.) PARTS MAY BE COATED WITH A LIGHT FILM OF LUBRICATION USED IN THE MANUFACTURING PROCESS.
- 5.) WIRE RANGE: 22-18 AWG.





P/C	DESCRIPTION	DIM 'X'	MAT'L	
00281	RL19-2-HB	$\phi .093$	NOTE 1	X
00282	RL19-2-THB	$\phi .093$	NOTE 2	X
00283	RL19-2-NPS	$\phi .093$	NOTE 3	

Rev.	Description of Change/ SCN#	Date
1	REDRAWN ON SOLIDWORKS NO CHANGES SCJ ORG.ENG.DWG.DATE: 10-17-91	11-22-02

UNCONTROLLED COPY



 THIRD ANGLE PROJECTION TOLERANCES UNLESS OTHERWISE SPECIFIED INCHES: .XX - $\pm .030$.XXX - $\pm .015$ ANGLES: $\pm 5^\circ$	TOOL NO. 0008	Title: RING TERMINAL		
		DO NOT SCALE DWG. ETCO Incorporated Engineered Products 25 Bellows Street Warwick, RI 02888 Phone: (401) 467-2400 Fax: (401) 467-9230 www.ETCO.com	Drawn By: S.JOHNSON Date: 11-22-02	Chk'd/App'd By: Scale: 10X Size: B
		Dwg. No.: RL19-2 cust		