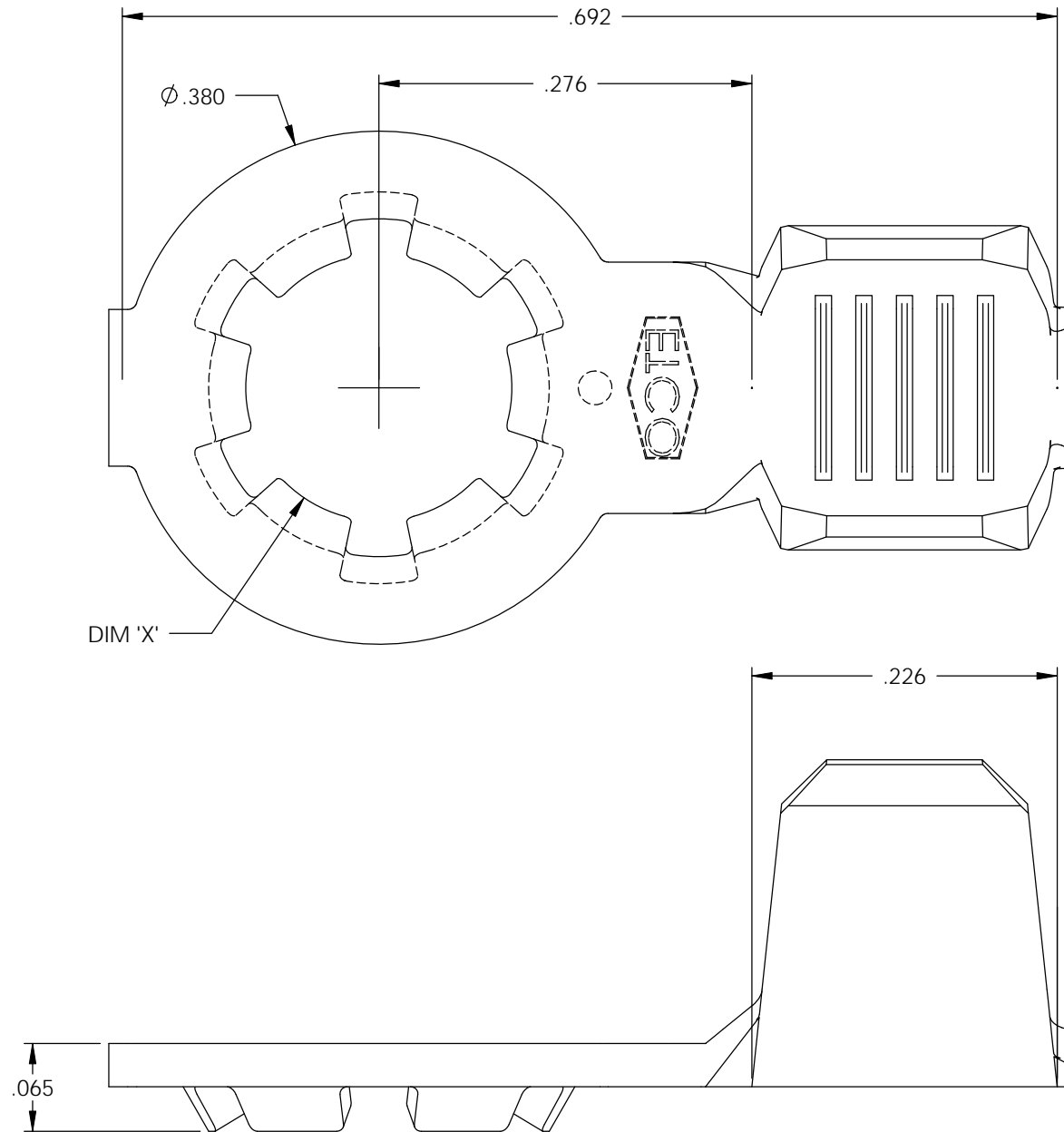


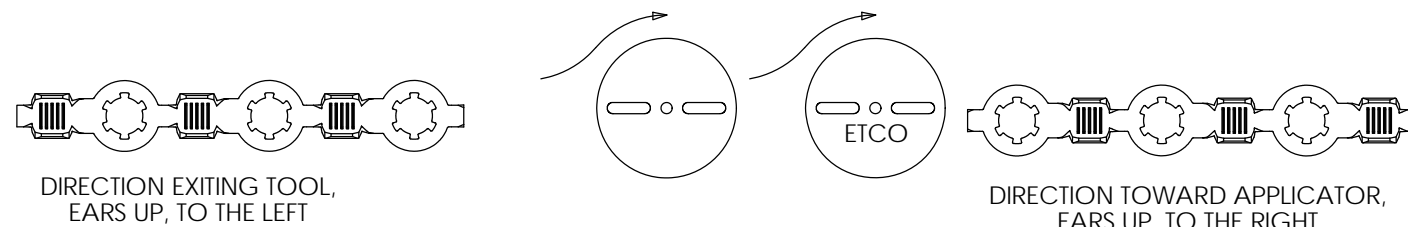
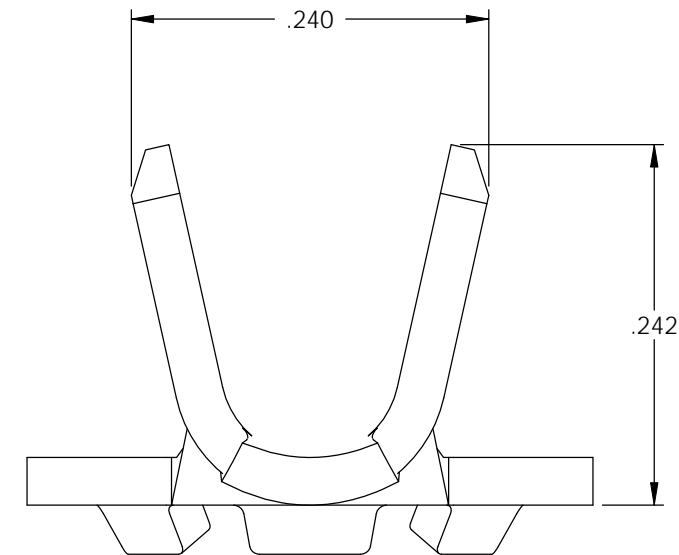
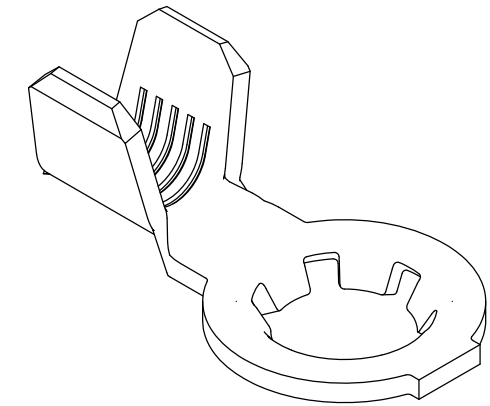
NOTE:

- 1.) MAT'L: .032 THK., BRASS, #2 TEMPER (HALF HARD), PER ETCO METAL CODE NO. 00762.
- 2.) MAT'L: .032 THK., PRE-TINNED BRASS, #2 TEMPER (HALF HARD), PER ETCO METAL CODE NO. 01722.
- 3.) PARTS MAY BE COATED WITH A LIGHT FILM OF LUBRICATION USED IN THE MANUFACTURING PROCESS.
- 4.) WIRE RANGE: 12-10 AWG.



P/C	DESCRIPTION	DIM 'X'	MAT'L	UL	CSA
02039	RL197E-6-HB	$\phi .145$	NOTE 1	X	X
02043	RL197E-6-THB	$\phi .145$	NOTE 2	X	X
02044	RL197E-8-HB	$\phi .171$	NOTE 1	X	X
02045	RL197E-8-THB	$\phi .171$	NOTE 2	X	X
02052	RL197E-10-THB	$\phi .197$	NOTE 2	X	X
02053	RL197E-10-HB	$\phi .197$	NOTE 1	X	X

Rev.	Description of Change/ SCN#	Date
1	REDRAWN ON SOLIDWORKS NO CHANGES SCJ ORG.ENG.DWG.DATE: 8-17-01	3-18-03
2	ADDED P/Cs SCN#140162 SCJ	9-20-07



THIS PRINT IS THE PROPERTY OF ETCO INCORPORATED. NO PART OF THIS DESIGN MAY BE USED IN ANY WAY WITHOUT WRITTEN CONSENT FROM ETCO INCORPORATED.

UNCONTROLLED COPY

<p>THIRD ANGLE PROJECTION TOLERANCES UNLESS OTHERWISE SPECIFIED INCHES: .XX - $\pm .030$.XXX - $\pm .015$ ANGLES: $\pm 5^\circ$</p>	<p>TOOL NO. 0735</p>	<p>Title: LOCKING RING TERMINAL</p>			
		<p>ETCO Incorporated Engineered Products 25 Bellows Street Warwick, RI 02888 Phone: (401) 467-2400 Fax: (401) 467-9230 www.ETCO.com</p>	<p>DO NOT SCALE DWG.</p>	<p>Drawn By: S.JOHNSON</p>	<p>Date: 3-18-03</p>
		<p>Chk'd/App'd By:</p>	<p>Scale: 8X</p>	<p>Size B</p>	<p>Dwg. No.: RL197E cust</p>