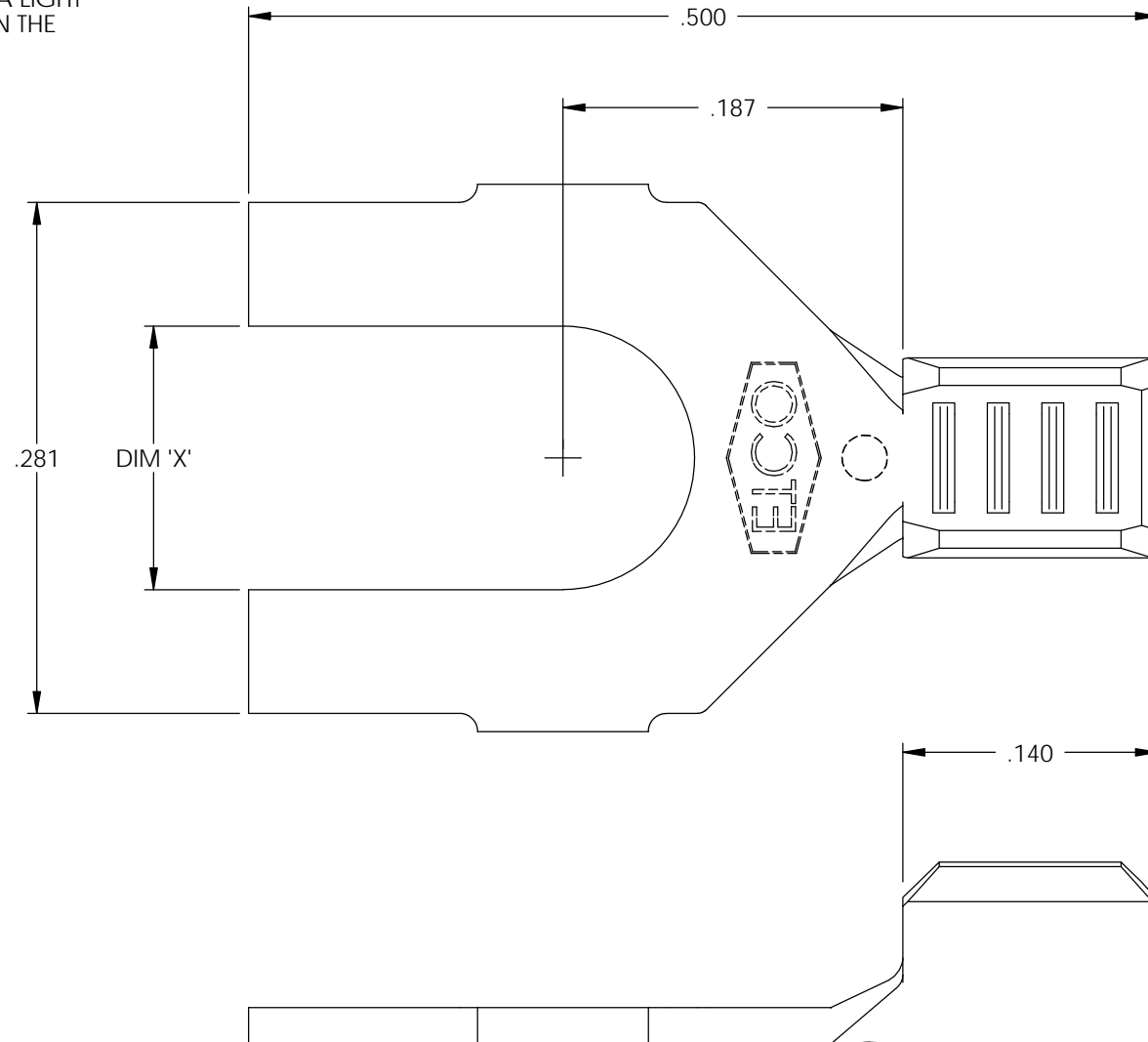



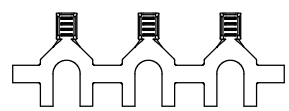
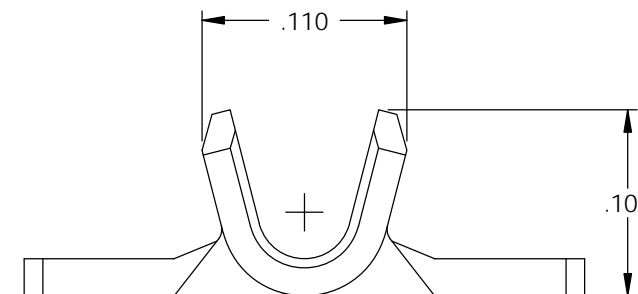
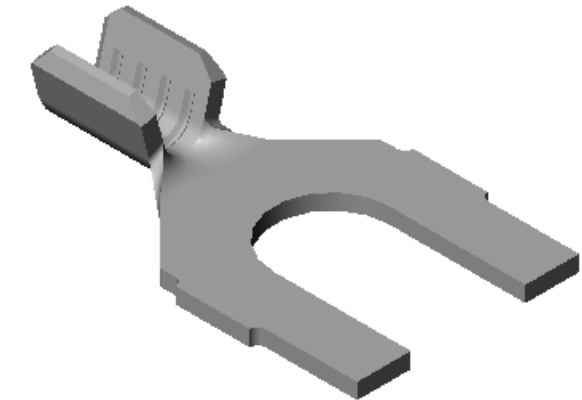
NOTE:

- 1.) MAT'L: .020 THK., BRASS, #2 TEMPER (HALF HARD), PER ETCO METAL CODE NO. 00280.
- 2.) MAT'L: .020 THK., PRE-TINNED BRASS, #2 TEMPER (HALF HARD), PER ETCO METAL CODE NO. 01350.
- 3.) MAT'L: .020 THK., PRE-NICKEL PLATED STEEL, #3 TEMPER (QUARTER HARD), PER ETCO METAL CODE NO. 03205.
- 4.) PARTS MAY BE COATED WITH A LIGHT FILM OF LUBRICATION USED IN THE MANUFACTURING PROCESS.
- 5.) WIRE RANGE: 22-20 AWG.

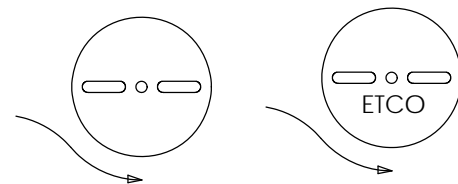


P/C	DESCRIPTION	DIM 'X'	MAT'L	
03095	S110N-4-HB	.119	NOTE 1	X
03096	S110N-4-THB	.119	NOTE 2	X
03097	S110N-4-NPS	.119	NOTE 3	
03101	S110N-6-HB	.145	NOTE 1	X
03102	S110N-6-THB	.145	NOTE 2	X
03103	S110N-6-NPS	.145	NOTE 3	
03104	S110N-8-HB	.171	NOTE 1	X
03105	S110N-8-THB	.171	NOTE 2	X
03106	S110N-8-NPS	.171	NOTE 3	

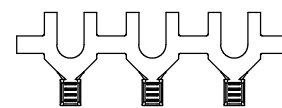
Rev.	Description of Change/ SCN#	Date
1	SCN# 102057 SCJ ORG.ENG.DWG.DATE: 1-13-93	11-18-02
2	P/C 03096 ADDED SCJ	12-12-03
3	ADDED P/Cs SCN#140162 SCJ	7-31-07





DIRECTION EXITING TOOL,
EARS UP TO THE BACK



DIRECTION TOWARD APPLICATOR,
EARS UP TO THE FRONT



UNCONTROLLED COPY

 THIRD ANGLE PROJECTION TOLERANCES UNLESS OTHERWISE SPECIFIED INCHES: .XX - ±.030 .XXX - ±.015 ANGLES: ±5°	TOOL NO. 0675	Title: SPADE TERMINAL		
		DO NOT SCALE DWG. Drawn By: S.JOHNSON Date: 11-18-02	Chk'd/App'd By:	Scale: 10X Size: B
		Dwg. No.: S110N cust		