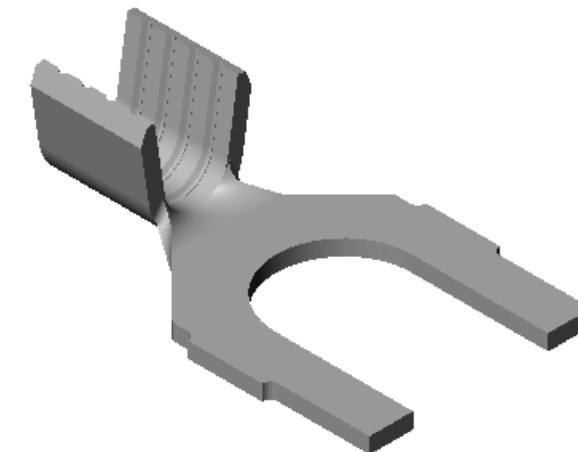
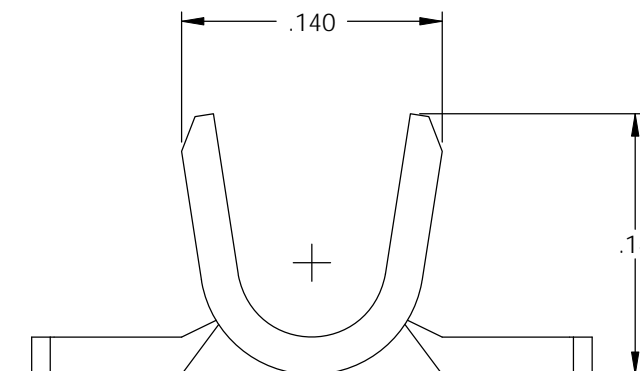
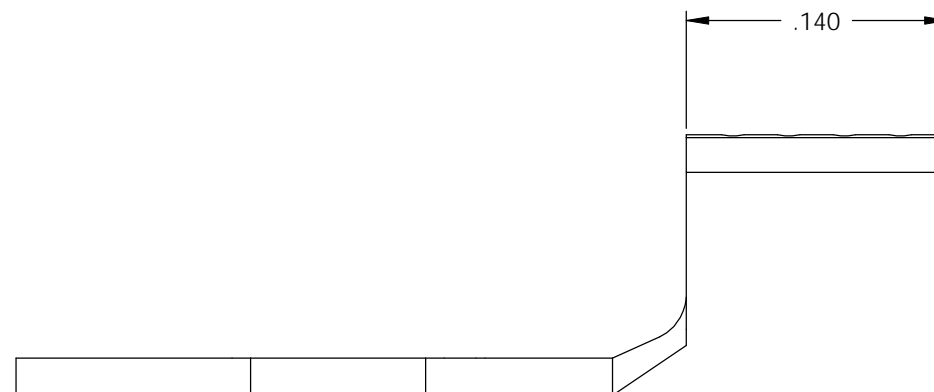
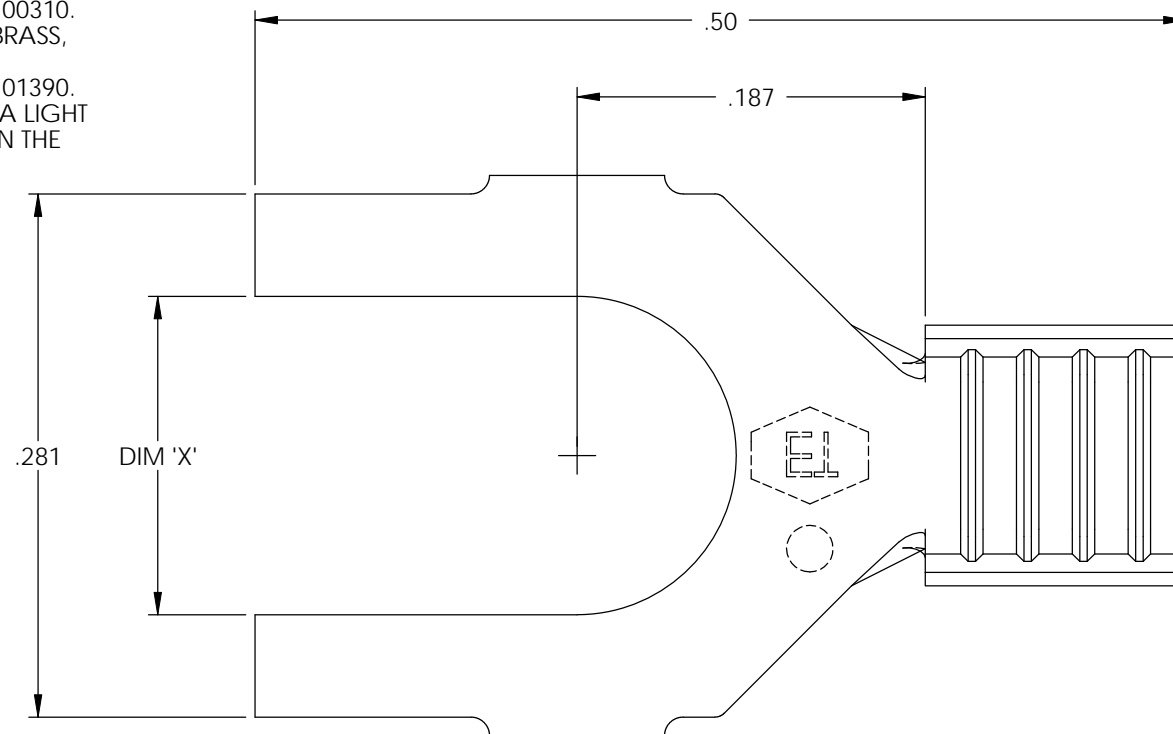
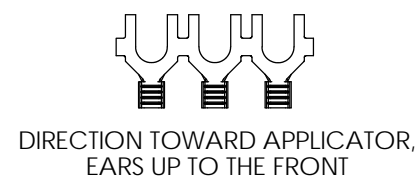
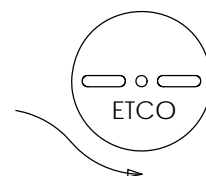
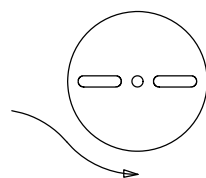


- NOTE:
 1.) MAT'L: .020 THK., BRASS,
 #2 TEMPER (HALF HARD),
 PER ETCO METAL CODE NO. 00310.
 2.) MAT'L: .020 THK., PRE-TINNED BRASS,
 #2 TEMPER (HALF HARD),
 PER ETCO METAL CODE NO. 01390.
 3.) PARTS MAY BE COATED WITH A LIGHT
 FILM OF LUBRICATION USED IN THE
 MANUFACTURING PROCESS.
 4.) WIRE RANGE: 20-16 AWG.



P/C	DESCRIPTION	DIM 'X'	MAT'L		
03170	S111-4-HB	.119	NOTE 1	X	X
03180	S111-4-THB	.119	NOTE 2	X	X
03190	S111-6-HB	.145	NOTE 1	X	X
03200	S111-6-THB	.145	NOTE 2	X	X
03210	S111-8-HB	.171	NOTE 1	X	X
03220	S111-8-THB	.171	NOTE 2	X	X

Rev.	Description of Change/ SCN#	Date
1	SCN# 102057 SCJ ORG.ENG.DWG.DATE: 1-20-93	11-7-02
2	ADDED P/Cs SCN#140162 SCJ	7-31-07



UNCONTROLLED COPY

 THIRD ANGLE PROJECTION TOLERANCES UNLESS OTHERWISE SPECIFIED INCHES: .XX - ±.030 .XXX - ±.015 ANGLES: ±5°	TOOL NO. 0060	Title: SPADE TERMINAL		
		DO NOT SCALE DWG.	Drawn By: S.JOHNSON	Date: 11-7-02
ETCO Incorporated Engineered Products 25 Bellows Street Warwick, RI 02888 Phone: (401) 467-2400 Fax: (401) 467-9230 www.ETCO.com		Chk'd/App'd By:	Scale: 10X	Size B
		Dwg. No.: S111 cust		