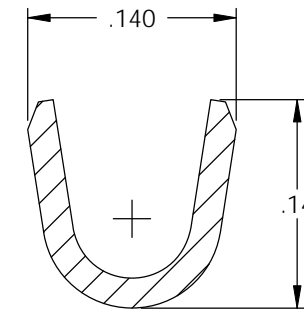
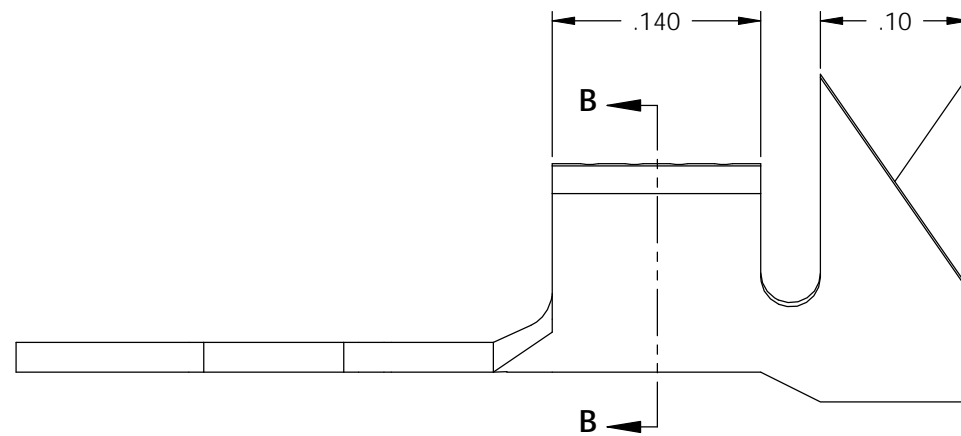
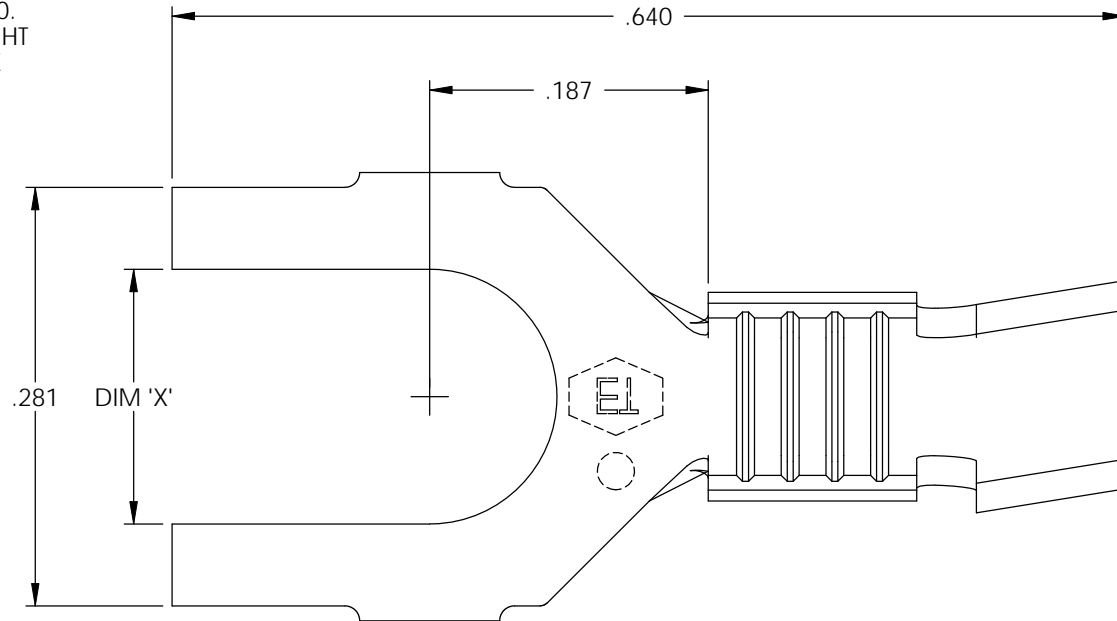
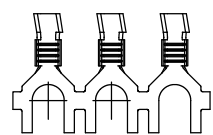
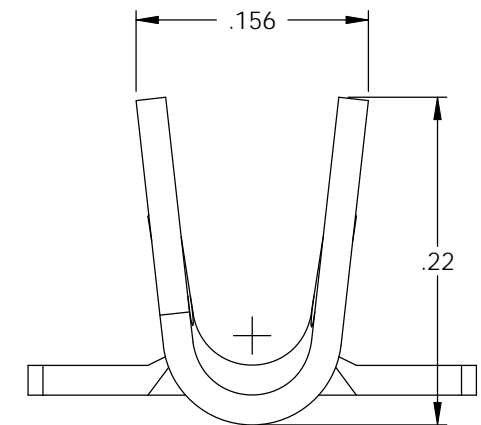


NOTE:

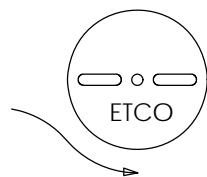
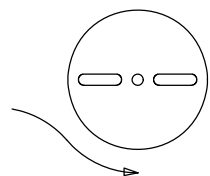
- 1.) MAT'L: .020 THK., BRASS, #2 TEMPER (HALF HARD), PER ETCO METAL CODE NO. 00390.
- 2.) MAT'L: .020 THK., PRE-TINNED BRASS, #2 TEMPER (HALF HARD), PER ETCO METAL CODE NO. 01450.
- 3.) PARTS MAY BE COATED WITH A LIGHT FILM OF LUBRICATION USED IN THE MANUFACTURING PROCESS.
- 4.) WIRE RANGE: 20-16 AWG.
- 5.) INSUL RANGE: \varnothing .060-.135



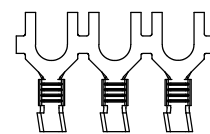
SECTION B-B
SCALE 8 : 1



DIRECTION EXITING TOOL,
EARS UP TO THE BACK

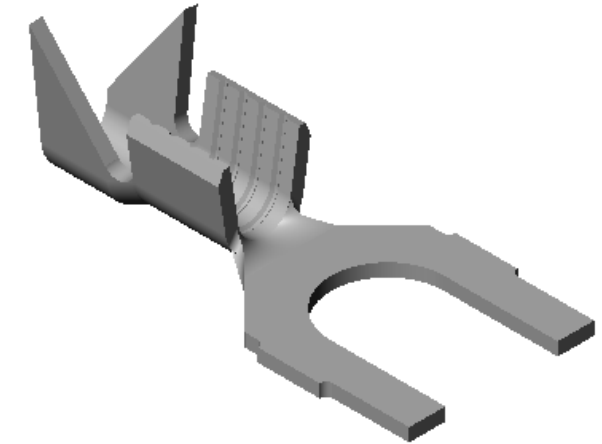


DIRECTION TOWARD APPLICATOR,
EARS UP TO THE FRONT



P/C	DESCRIPTION	DIM 'X'	MAT'L		
03530	S121-4-HB	.119	NOTE 1	X	X
03540	S121-4-THB	.119	NOTE 2	X	X
03550	S121-6-HB	.145	NOTE 1	X	X
03560	S121-6-THB	.145	NOTE 2	X	X
03570	S121-8-HB	.171	NOTE 1	X	X
03580	S121-8-THB	.171	NOTE 2	X	X

Rev.	Description of Change/ SCN#	Date
1	SCN# 102057 SCJ ORG.ENG.DWG.DATE: 1-20-93	11-7-02
2	ADDED P/Cs SCN#140162 SCJ	7-31-07



UNCONTROLLED COPY

 THIRD ANGLE PROJECTION TOLERANCES UNLESS OTHERWISE SPECIFIED INCHES: .XX - \pm .030 .XXX - \pm .015 ANGLES: \pm 5°	TOOL NO. 0060	Title: SPADE TERMINAL		
		DO NOT SCALE DWG. ETCO Incorporated Engineered Products 25 Bellows Street Warwick, RI 02888 Phone: (401) 467-2400 Fax: (401) 467-9230 www.ETCO.com	Drawn By: S.JOHNSON Chk'd/App'd By:	Date: 11-7-02 Scale: 8X Size: B
		Dwg. No.: S121 cust		