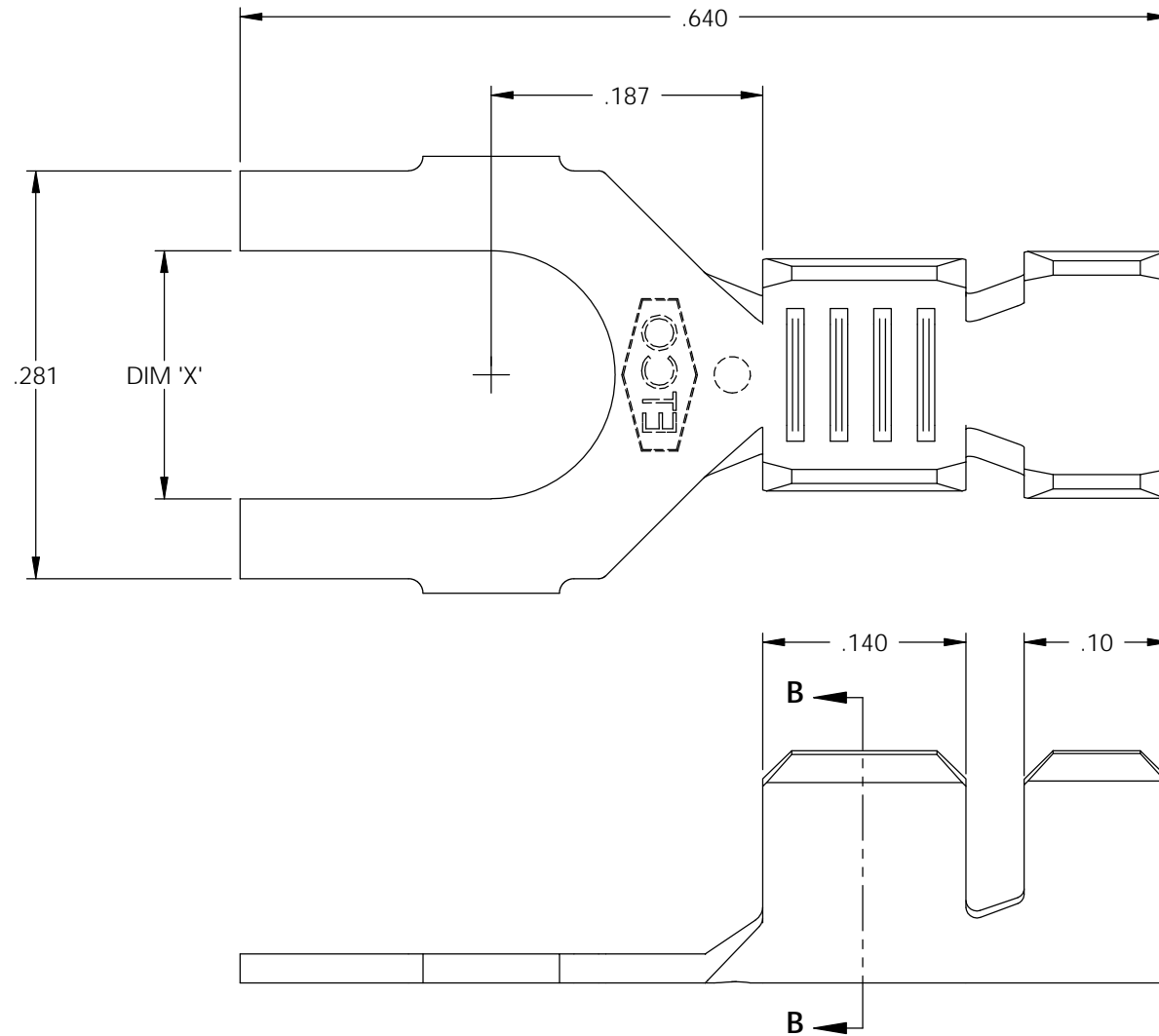

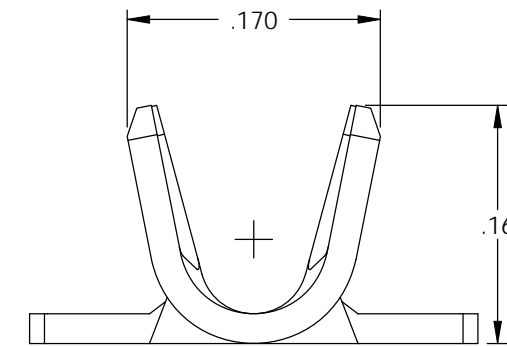
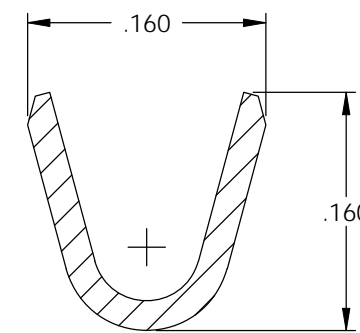
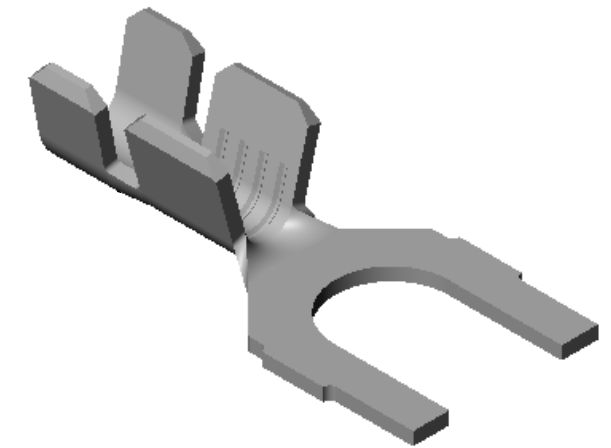


- NOTE:
- MAT'L: .020 THK., BRASS, #2 TEMPER (HALF HARD), PER ETCO METAL CODE NO. 00330.
 - MAT'L: .020 THK., PRE-TINNED BRASS, #2 TEMPER (HALF HARD), PER ETCO METAL CODE NO. 01410.
 - MAT'L: .020 THK., PRE-NICKEL PLATED STEEL, #3 TEMPER (QUARTER HARD), PER ETCO METAL CODE NO. 03230.
 - PARTS MAY BE COATED WITH A LIGHT FILM OF LUBRICATION USED IN THE MANUFACTURING PROCESS.
 - WIRE RANGE: 18-16 AWG.
 - INSUL RANGE: ϕ .075-.125

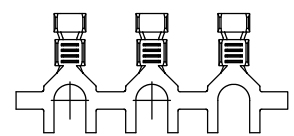


P/C	DESCRIPTION	DIM 'X'	MAT'L	
03156	S122N-4-HB	.119	NOTE 1	X
03157	S122N-4-THB	.119	NOTE 2	X
03158	S122N-4-NPS	.119	NOTE 3	
03159	S122N-6-NPS	.145	NOTE 3	
03160	S122N-6-HB	.145	NOTE 1	X
03161	S122N-6-THB	.145	NOTE 2	X
03162	S122N-8-HB	.171	NOTE 1	X
03163	S122N-8-THB	.171	NOTE 2	X
03164	S122N-8-NPS	.171	NOTE 3	

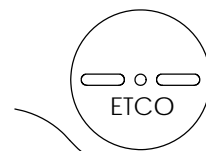
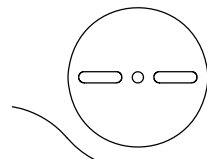
Rev.	Description of Change/ SCN#	Date
1	SCN# 102057 SCJ ORG.ENG.DWG.DATE: 1-13-93	11-18-02
2	ADDED P/Cs SCN#140162 SCJ	7-31-07



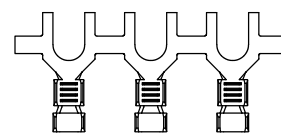
SECTION B-B
SCALE 8 : 1



DIRECTION EXITING TOOL,
EARS UP TO THE BACK





DIRECTION TOWARD APPLICATOR, FROM LEFT,
EARS UP, TO THE FRONT



THIS PRINT IS THE PROPERTY OF ETCO INCORPORATED. NO PART OF THIS DESIGN MAY BE USED IN ANY WAY WITHOUT WRITTEN CONSENT FROM ETCO INCORPORATED.

UNCONTROLLED COPY

 THIRD ANGLE PROJECTION TOLERANCES UNLESS OTHERWISE SPECIFIED INCHES: .XX - \pm .030 .XXX - \pm .015 ANGLES: $\pm 5^\circ$	TOOL NO. 0675	Title: SPADE TERMINAL		
		DO NOT SCALE DWG.	Drawn By: S.JOHNSON	Date: 11-18-02
		ETCO Incorporated Engineered Products 25 Bellows Street Warwick, RI 02888 Phone: (401) 467-2400 Fax: (401) 467-9230 www.ETCO.com	Chk'd/App'd By:	Scale: 8X Size: B
		Dwg. No.: S122N cust		