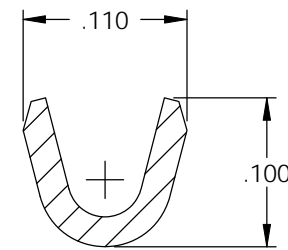
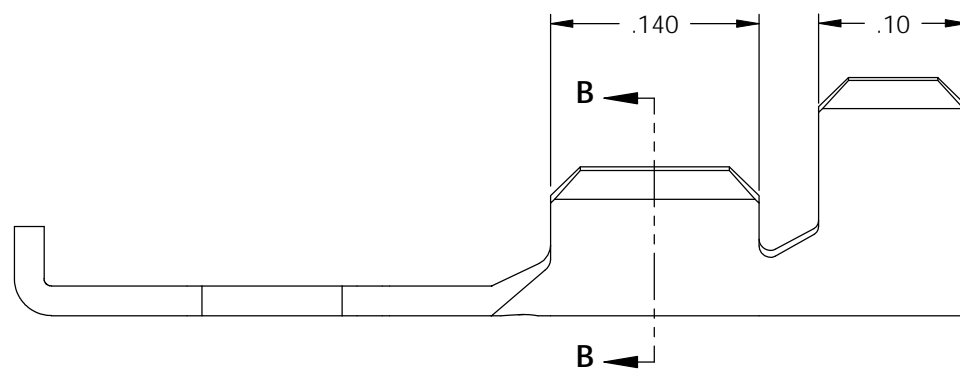
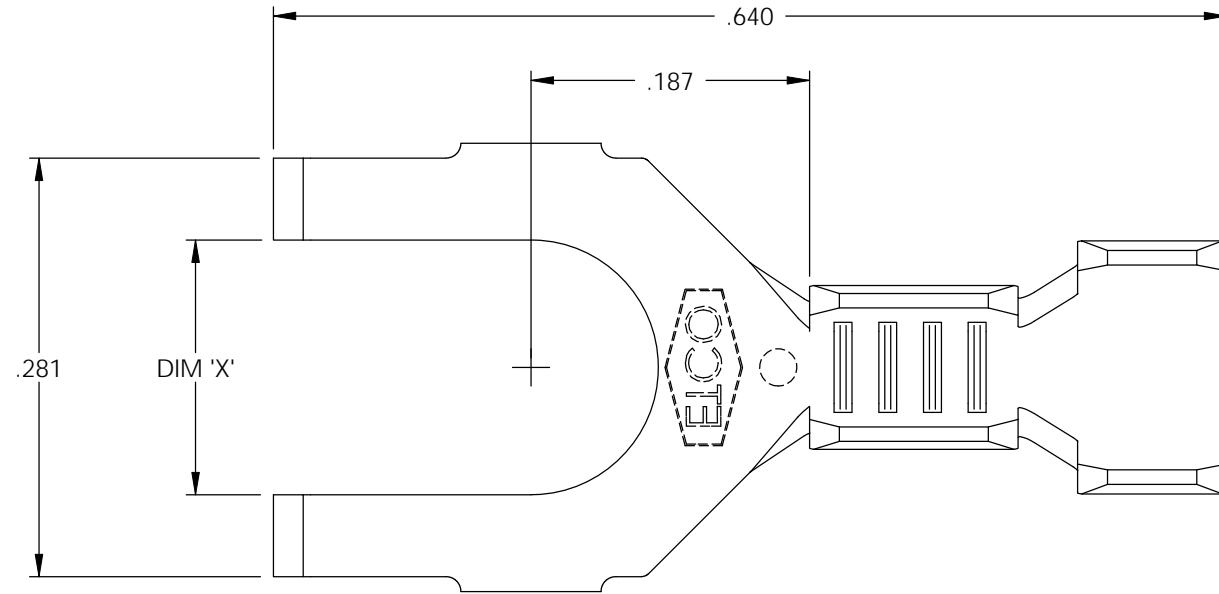
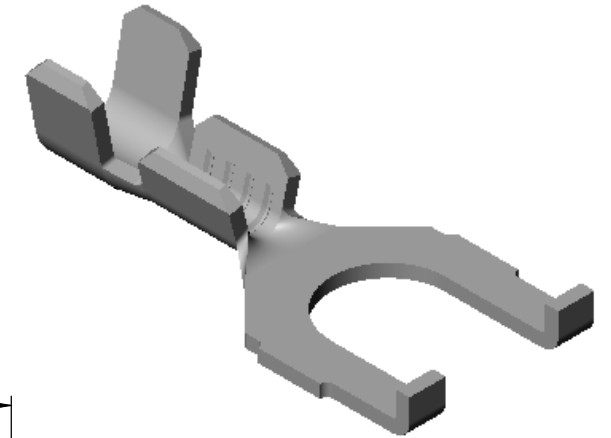
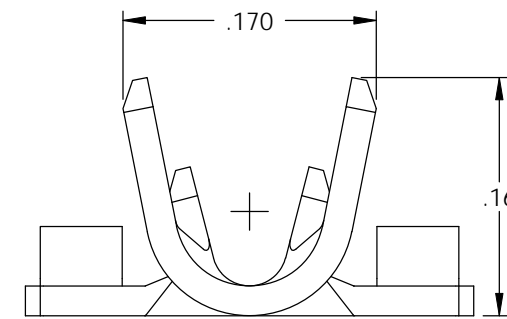


NOTE:

- 1.) MAT'L: .020 THK., BRASS, #2 TEMPER (HALF HARD), PER ETCO METAL CODE NO. 00330.
- 2.) MAT'L: .020 THK., PRE-TINNED BRASS, #2 TEMPER (HALF HARD), PER ETCO METAL CODE NO. 01410.
- 3.) MAT'L: .020 THK., PRE-NICKEL PLATED STEEL, #3 TEMPER (QUARTER HARD), PER ETCO METAL CODE NO. 03235.
- 4.) PARTS MAY BE COATED WITH A LIGHT FILM OF LUBRICATION USED IN THE MANUFACTURING PROCESS.
- 5.) WIRE RANGE: 22-20 AWG.
- 6.) INSUL RANGE: ϕ .075-.125

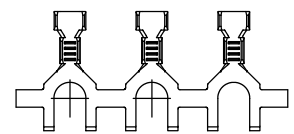


SECTION B-B
SCALE 8 : 1

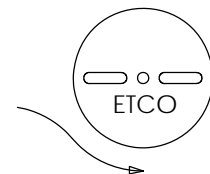
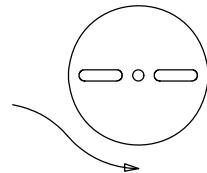


P/C	DESCRIPTION	DIM 'X'	MAT'L	
03165	S125N-4-HB	.119	NOTE 1	X
03166	S125N-4-THB	.119	NOTE 2	X
03167	S125N-4-NPS	.119	NOTE 3	
03168	S125N-6-HB	.145	NOTE 1	X
03169	S125N-6-THB	.145	NOTE 2	X
03171	S125N-6-NPS	.145	NOTE 3	
03173	S125N-8-HB	.171	NOTE 1	X
03174	S125N-8-THB	.171	NOTE 2	X
03175	S125N-8-NPS	.171	NOTE 3	

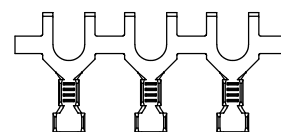
Rev.	Description of Change/ SCN#	Date
1	SCN# 102057 SCJ ORG.ENG.DWG.DATE: 1-13-93	11-18-02
2	ADDED P/Cs SCN#140162 SCJ	7-31-07



DIRECTION EXITING TOOL,
EARS UP TO THE BACK



DIRECTION TOWARD APPLICATOR, FROM LEFT,
EARS UP, TO THE FRONT



UNCONTROLLED COPY

 THIRD ANGLE PROJECTION TOLERANCES UNLESS OTHERWISE SPECIFIED INCHES: .XX - \pm .030 .XXX - \pm .015 ANGLES: \pm 5°	TOOL NO. 0675	Title: SPADE TERMINAL		
		DO NOT SCALE DWG.	Drawn By: S.JOHNSON	Date: 11-18-02
		ETCO Incorporated Engineered Products 25 Bellows Street Warwick, RI 02888 Phone: (401) 467-2400 Fax: (401) 467-9230 www.ETCO.com	Chk'd/App'd By:	Scale: 8X Size: B
		Dwg. No.: S125N cust		