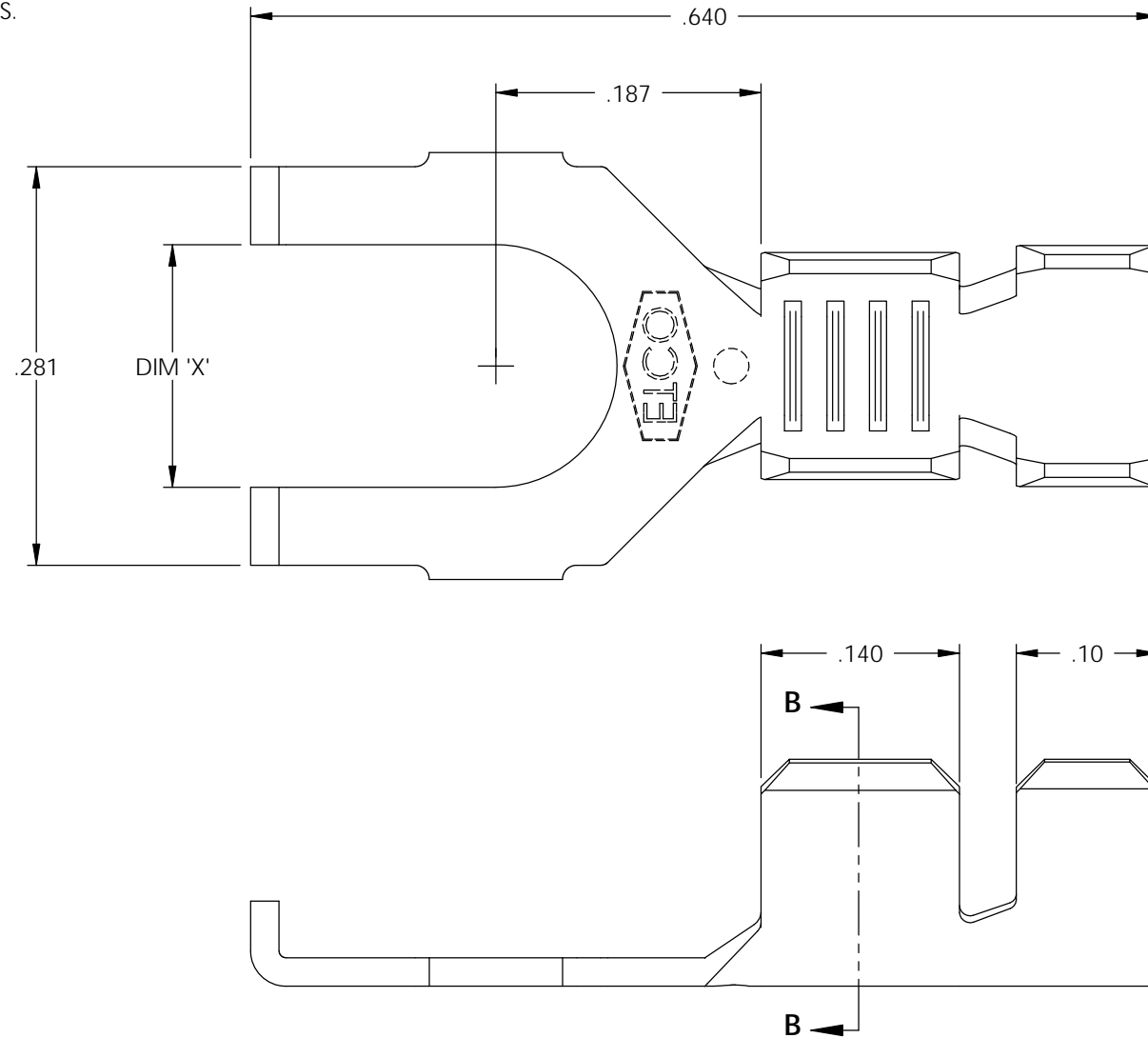



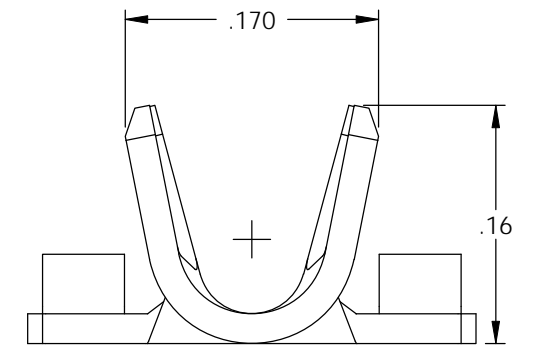
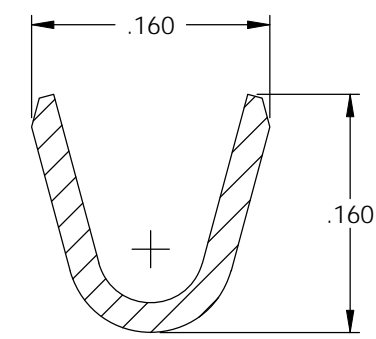
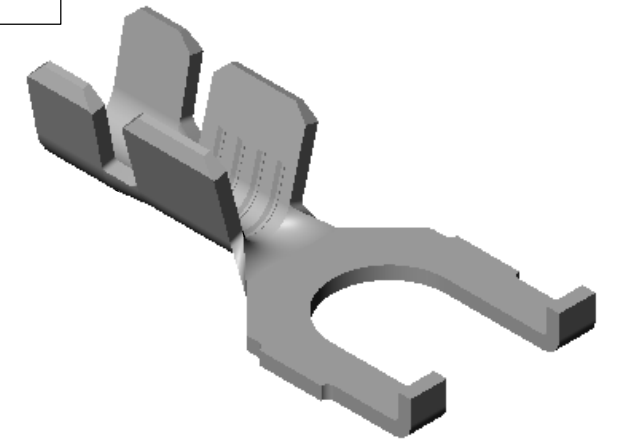
NOTE:

- 1.) MAT'L: .020 THK., BRASS, #2 TEMPER (HALF HARD), PER ETCO METAL CODE NO. 00330.
- 2.) MAT'L: .020 THK., PRE-TINNED BRASS, #2 TEMPER (HALF HARD), PER ETCO METAL CODE NO. 01410.
- 3.) MAT'L: .020 THK., PRE-NICKEL PLATED STEEL, #3 TEMPER (QUARTER HARD), PER ETCO METAL CODE NO. 03235.
- 4.) PARTS MAY BE COATED WITH A LIGHT FILM OF LUBRICATION USED IN THE MANUFACTURING PROCESS.
- 5.) WIRE RANGE: 18-16 AWG.
- 6.) INSUL RANGE: \varnothing .075-.125

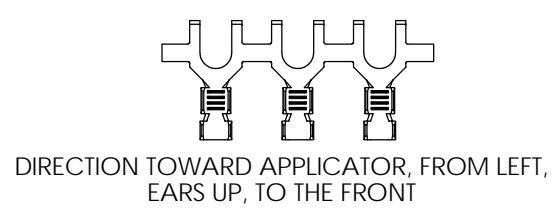
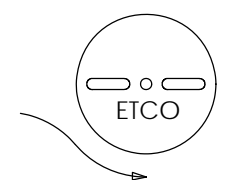
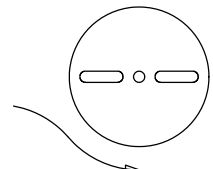
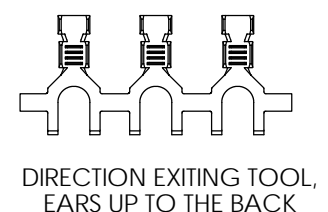


P/C	DESCRIPTION	DIM 'X'	MAT'L	
03176	S127N-4-HB	.119	NOTE 1	X
03178	S127N-4-THB	.119	NOTE 2	X
03179	S127N-4-NPS	.119	NOTE 3	
03181	S127N-6-HB	.145	NOTE 1	X
03182	S127N-6-THB	.145	NOTE 2	X
03183	S127N-8-HB	.171	NOTE 1	X
03184	S127N-8-THB	.171	NOTE 2	X
03185	S127N-6-NPS	.145	NOTE 3	
03186	S127N-8-NPS	.171	NOTE 3	

Rev.	Description of Change/ SCN#	Date
1	SCN# 102057 SCJ ORG.ENG.DWG.DATE: 1-13-93	11-18-02
2	ADDED P/Cs SCN#140162 SCJ	7-31-07





SECTION B-B
SCALE 8 : 1



THIS PRINT IS THE PROPERTY OF ETCO INCORPORATED. NO PART OF THIS DESIGN MAY BE USED IN ANY WAY WITHOUT WRITTEN CONSENT FROM ETCO INCORPORATED.

UNCONTROLLED COPY

 THIRD ANGLE PROJECTION TOLERANCES UNLESS OTHERWISE SPECIFIED INCHES: .XX - \pm .030 .XXX - \pm .015 ANGLES: \pm 5°	TOOL NO. 0675	Title: SPADE TERMINAL		
		DO NOT SCALE DWG.	Drawn By: S.JOHNSON	Date: 11-18-02
ETCO Incorporated Engineered Products 25 Bellows Street Warwick, RI 02888 Phone: (401) 467-2400 Fax: (401) 467-9230 www.ETCO.com		Chk'd/App'd By:	Scale: 8X	Size B
		Dwg. No.: S127N cust		