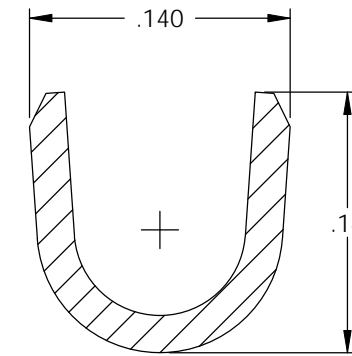
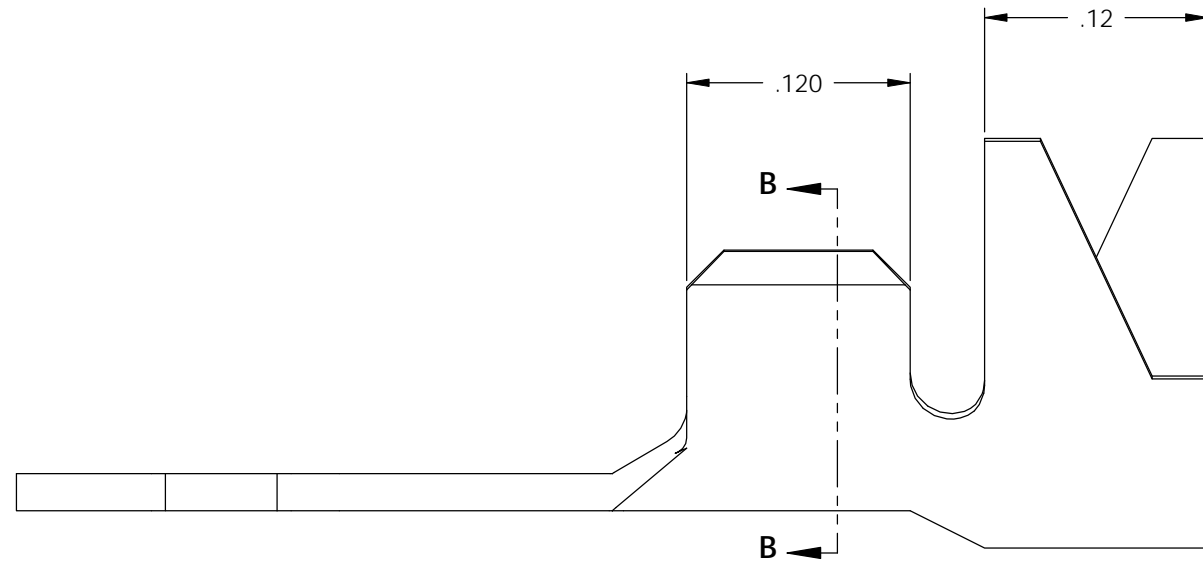
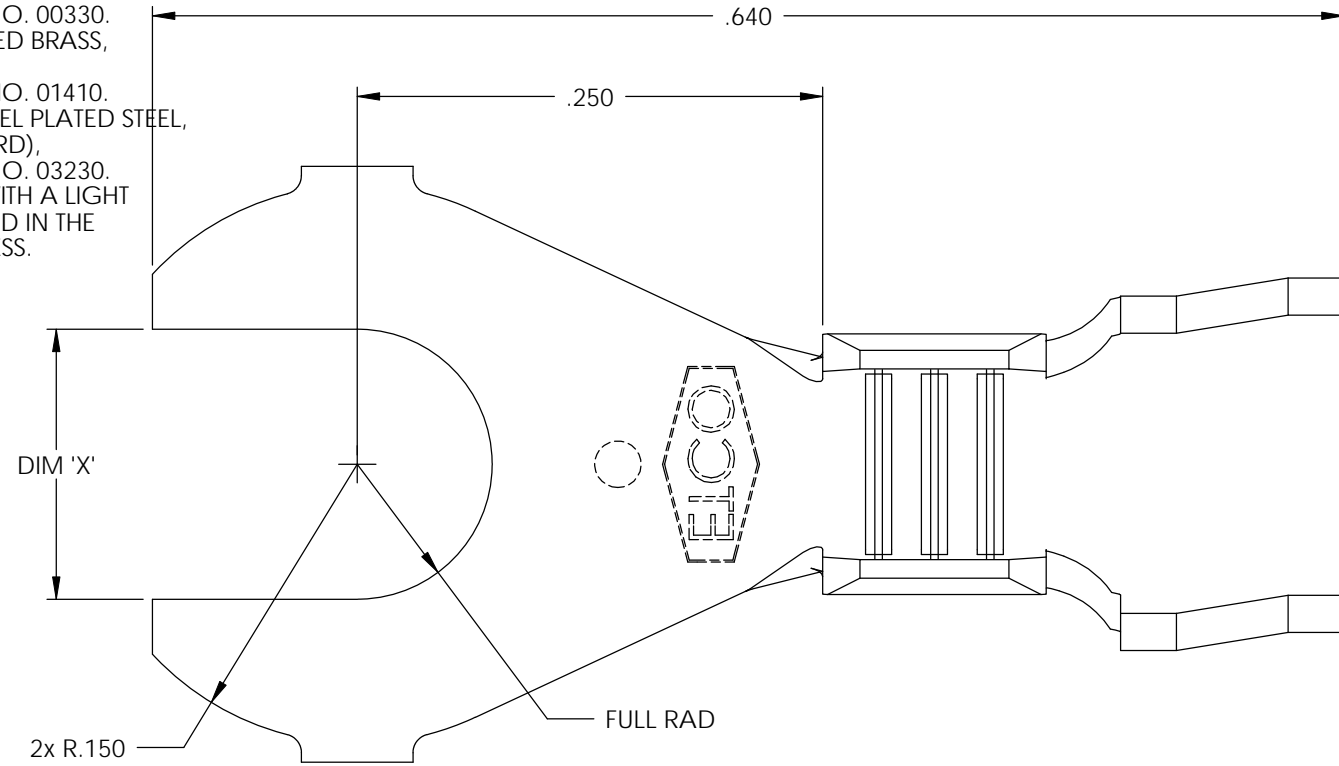
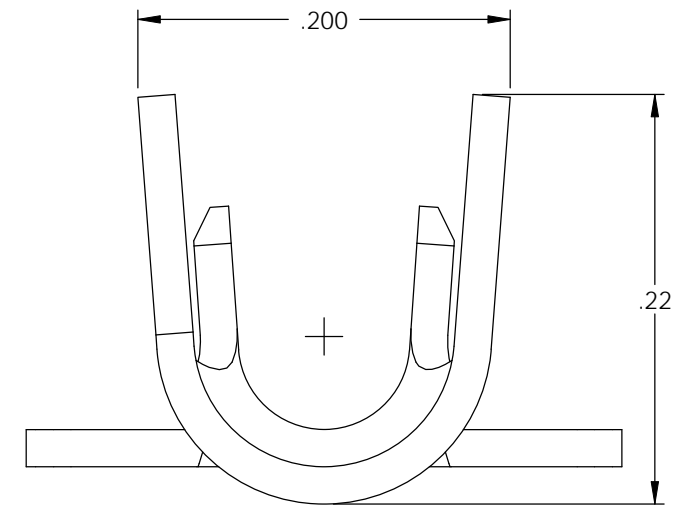


NOTE:

- 1.) MAT'L: .020 THK., BRASS, #2 TEMPER (HALF HARD), PER ETCO METAL CODE NO. 00330.
- 2.) MAT'L: .020 THK., PRE-TINNED BRASS, #2 TEMPER (HALF HARD), PER ETCO METAL CODE NO. 01410.
- 3.) MAT'L: .020 THK., PRE-NICKEL PLATED STEEL, #3 TEMPER (QUARTER HARD), PER ETCO METAL CODE NO. 03230.
- 4.) PARTS MAY BE COATED WITH A LIGHT FILM OF LUBRICATION USED IN THE MANUFACTURING PROCESS.
- 5.) WIRE RANGE: 20-16 AWG.
- 6.) INSUL RANGE: Ø.090-.130

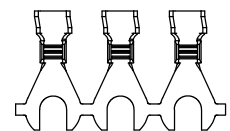
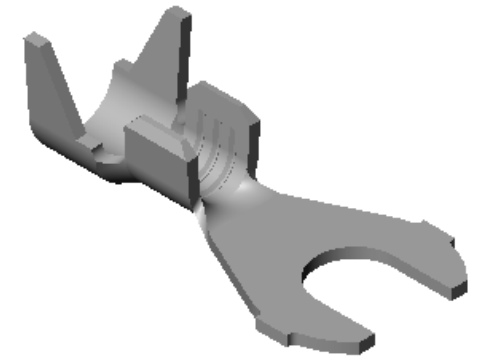


SECTION B-B
SCALE 10 : 1

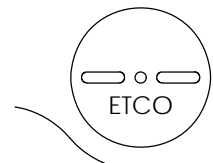
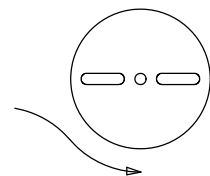


P/C	DESCRIPTION	DIM 'X'	MAT'L	UL	SP
03910	S186-4-HB	.119	NOTE 1	X	X
03920	S186-4-THB	.119	NOTE 2	X	X
03930	S186-6-HB	.145	NOTE 1	X	X
03940	S186-6-THB	.145	NOTE 2	X	X
03950	S186-8-HB	.171	NOTE 1	X	X
03960	S186-8-THB	.171	NOTE 2	X	X
03969	S186-10-NPS	.197	NOTE 3		
03970	S186-10-HB	.197	NOTE 1	X	X
03980	S186-10-THB	.197	NOTE 2	X	X

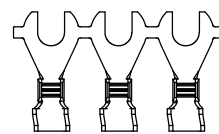
Rev.	Description of Change/ SCN#	Date
1	REDRAWN ON SOLIDWORKS NO CHANGES SCJ ORG.ENG.DWG.DATE: 1-4-92	1-9-03
2	ADDED P/Cs SCN#140162 SCJ	8-22-07



DIRECTION EXITING TOOL,
EARS UP, TO THE BACK



DIRECTION TOWARD APPLICATOR,
EARS UP, TO THE FRONT



UNCONTROLLED COPY

<p>THIRD ANGLE PROJECTION TOLERANCES UNLESS OTHERWISE SPECIFIED INCHES: .XX - ±.030 .XXX - ±.015 ANGLES: ±5°</p>	<p>TOOL NO. 0063</p>	<p>Title: SPADE TERMINAL</p>		
		<p>DO NOT SCALE DWG.</p>	<p>Drawn By: S.JOHNSON</p>	<p>Date: 1-9-03</p>
<p>ETCO Incorporated Engineered Products 25 Bellows Street Warwick, RI 02888 Phone: (401) 467-2400 Fax: (401) 467-9230 www.ETCO.com</p>		<p>Chk'd/App'd By:</p>	<p>Scale: 10X</p>	<p>Size B</p>
		<p>Dwg. No.: S186 cust</p>		