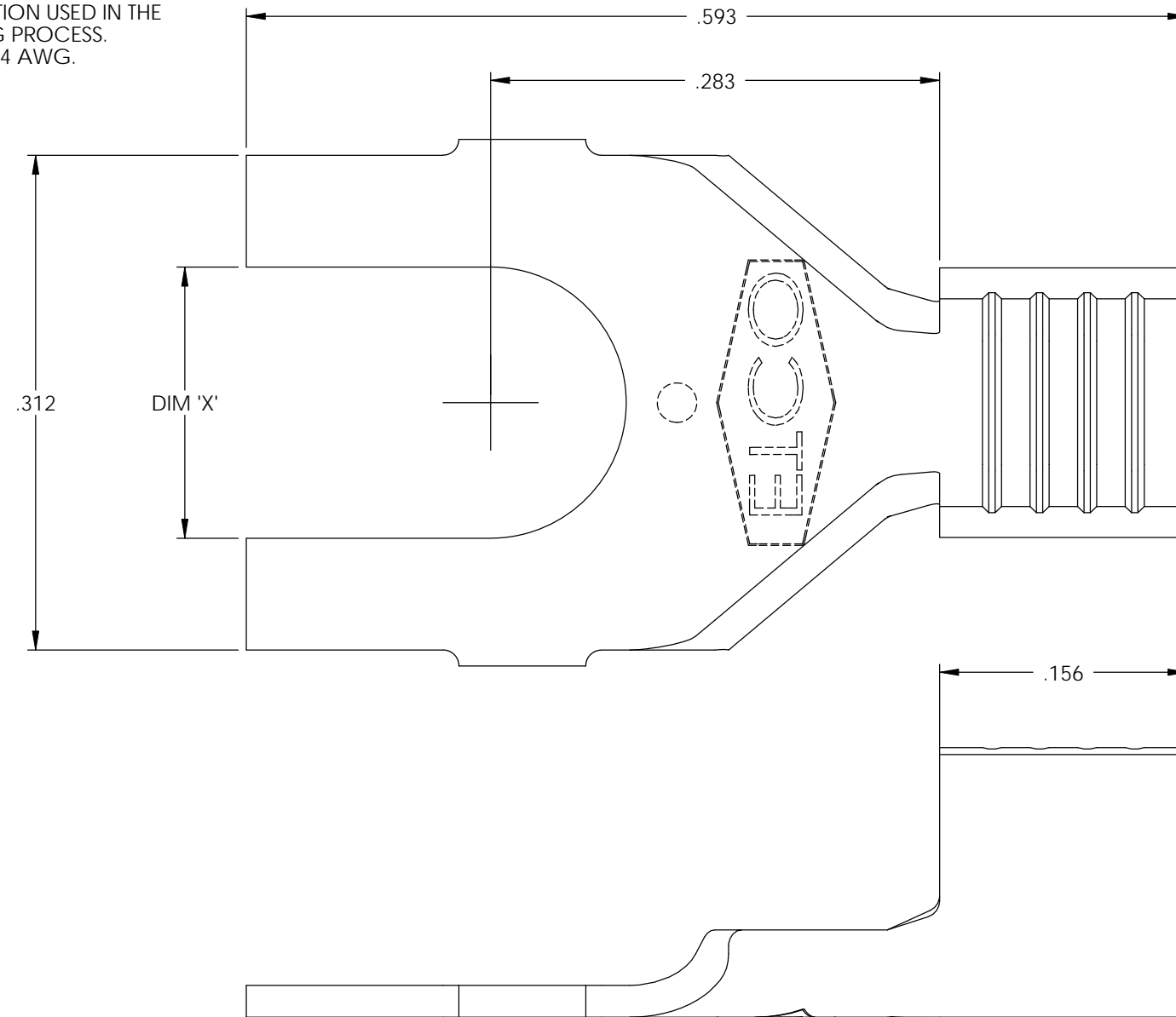


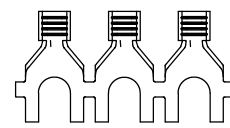
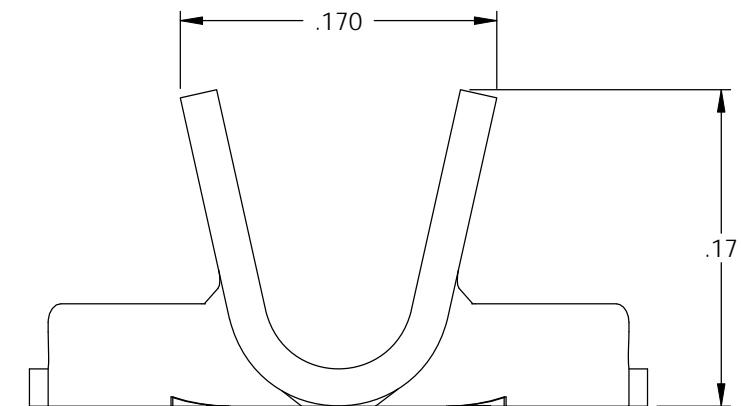
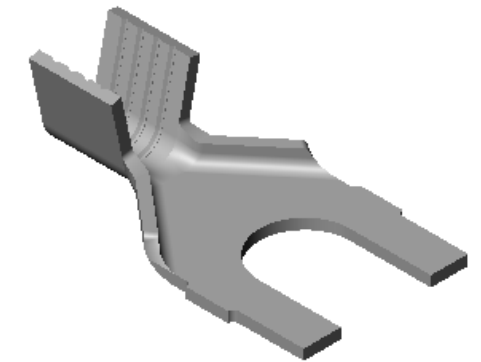
NOTE :

- 1.) MAT'L: .020 THK., BRASS,
#2 TEMPER (HALF HARD),
PER ETCO METAL CODE NO. 00310.
- 2.) MAT'L: .020 THK., PRE-TINNED BRASS,
#2 TEMPER (HALF HARD),
PER ETCO METAL CODE NO. 01390.
- 3.) PARTS MAY BE COATED WITH A LIGHT
FILM OF LUBRICATION USED IN THE
MANUFACTURING PROCESS.
- 4.) WIRE RANGE: 18-14 AWG.

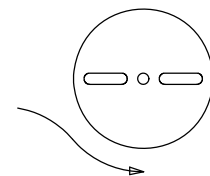


P/C	DESCRIPTION	DIM 'X'	MAT'L	UL	SP
03990	S210-4-HB	.119	NOTE 1	X	X
04000	S210-4-THB	.119	NOTE 2	X	X
04020	S210-6-THB	.145	NOTE 2	X	X
04021	S210-6-HB	.145	NOTE 1	X	X
04040	S210-8-THB	.171	NOTE 2	X	X
04045	S210-8-HB	.171	NOTE 1	X	X
04050	S210-10-HB	.197	NOTE 1	X	X
04060	S210-10-THB	.197	NOTE 2	X	X

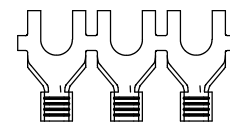
Rev.	Description of Change/ SCN#	Date
1	SCN# 102104 SCJ ORG.ENG.DWG.DATE: 12-21-92	1-13-03
2	ADDED P/Cs SCN#140162 SCJ	8-29-07



DIRECTION EXITING TOOL,
EARS UP, TO THE BACK



DIRECTION TOWARD APPLICATOR,
EARS UP, TO THE FRONT



THIS PRINT IS THE PROPERTY OF ETCO INCORPORATED. NO PART OF THIS DESIGN MAY BE USED IN ANY WAY WITHOUT WRITTEN CONSENT FROM ETCO INCORPORATED.

UNCONTROLLED COPY

<p>THIRD ANGLE PROJECTION TOLERANCES UNLESS OTHERWISE SPECIFIED INCHES: .XX - ±.030 .XXX - ±.015 ANGLES: ±5°</p>	<p>TOOL NO. 0634</p>	<p>Title: SPADE TERMINAL</p>		
		<p>DO NOT SCALE DWG.</p>	<p>Drawn By: S.JOHNSON</p>	<p>Date: 1-13-03</p>
<p>ETCO Incorporated Engineered Products 25 Bellows Street Warwick, RI 02888 Phone: (401) 467-2400 Fax: (401) 467-9230 www.ETCO.com</p>		<p>Chk'd/App'd By:</p>	<p>Scale: 10X</p>	<p>Size B</p>
		<p>Dwg. No.: S210 cust</p>		