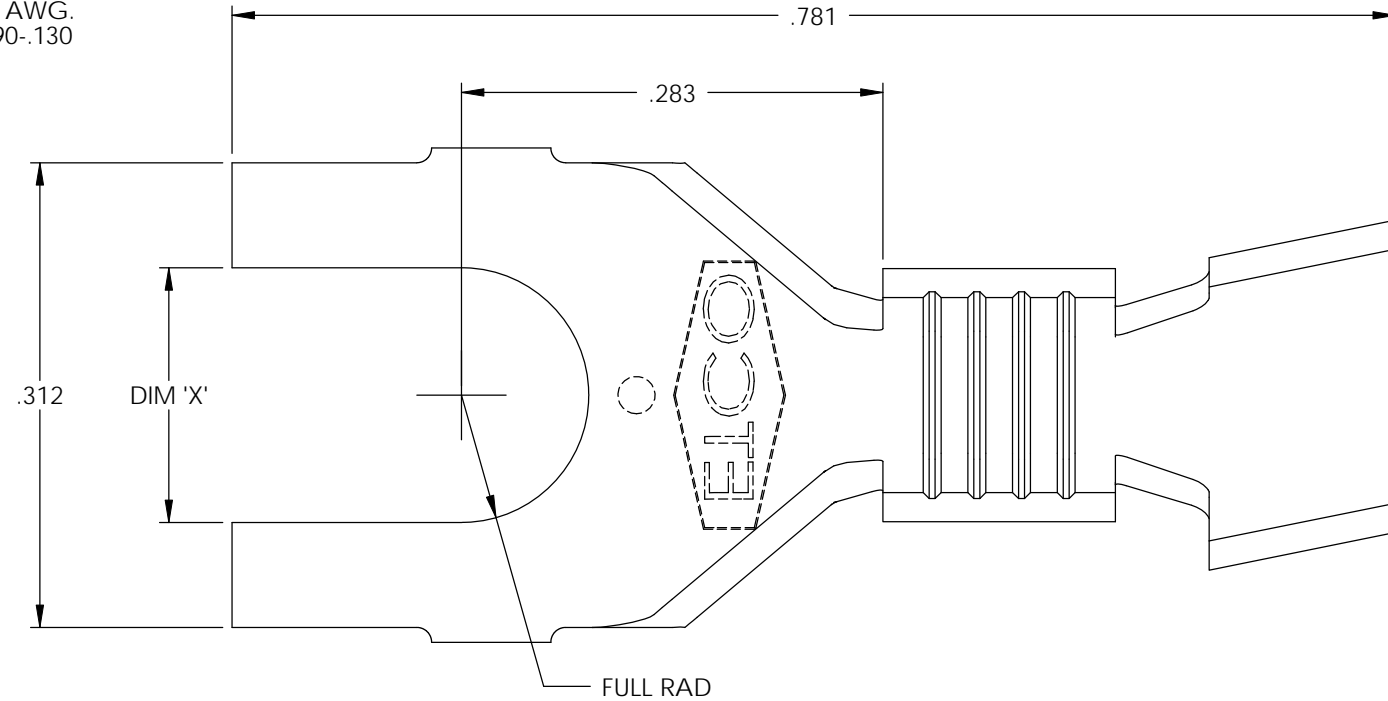


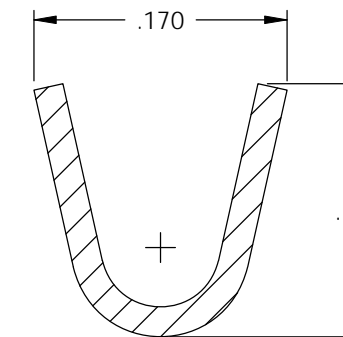
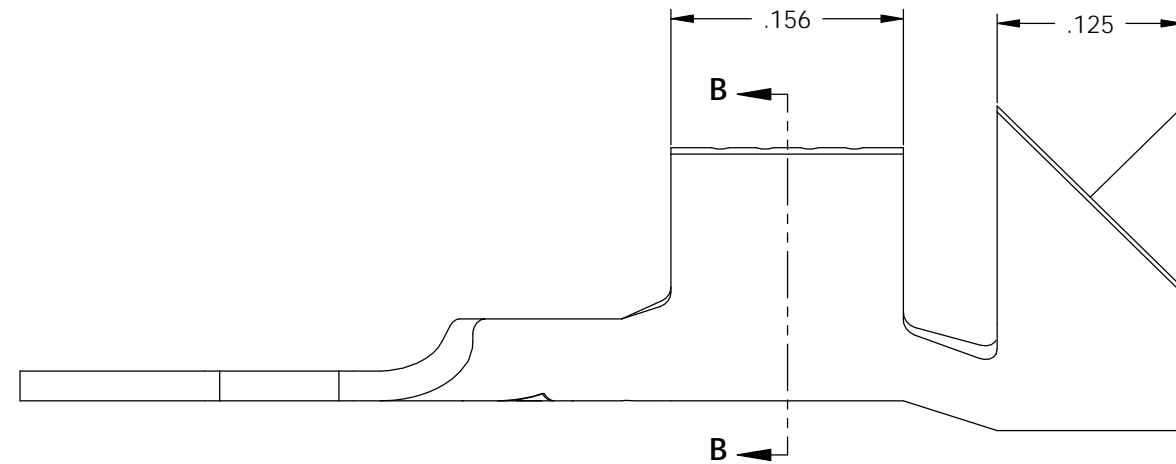
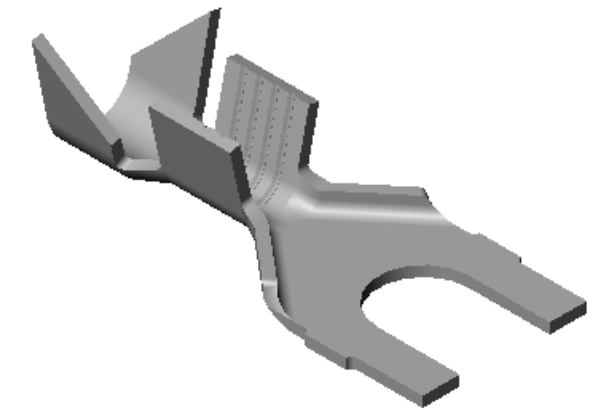
NOTE :

- 1.) MAT'L: .020 THK., BRASS,  
#2 TEMPER (HALF HARD),  
PER ETCO METAL CODE NO. 00400.
- 2.) MAT'L: .020 THK., PRE-TINNED BRASS,  
#2 TEMPER (HALF HARD),  
PER ETCO METAL CODE NO. 01460.
- 3.) PARTS MAY BE COATED WITH A LIGHT  
FILM OF LUBRICATION USED IN THE  
MANUFACTURING PROCESS.
- 4.) WIRE RANGE: 18-14 AWG.
- 5.) INSUL RANGE:  $\varnothing$ .090-.130

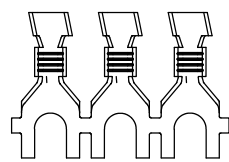
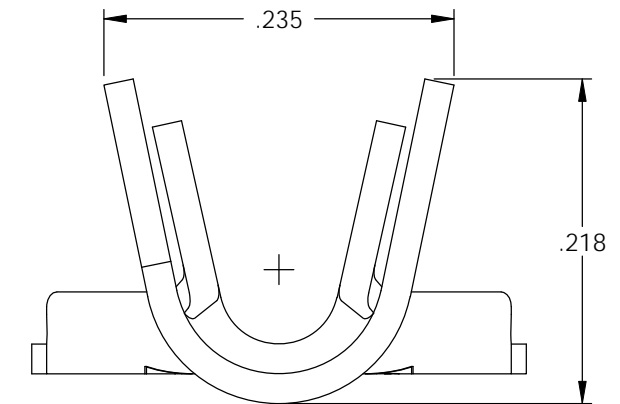


P/C	DESCRIPTION	DIM 'X'	MAT'L	UL	CSA
04150	S220-4-HB	.119	NOTE 1	X	X
04160	S220-4-THB	.119	NOTE 2	X	X
04170	S220-6-HB	.145	NOTE 1	X	X
04180	S220-6-THB	.145	NOTE 2	X	X
04190	S220-8-HB	.171	NOTE 1	X	X
04200	S220-8-THB	.171	NOTE 2	X	X
04210	S220-10-HB	.197	NOTE 1	X	X
04220	S220-10-THB	.197	NOTE 2	X	X

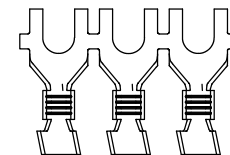
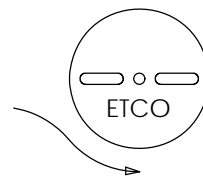
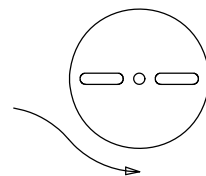
Rev.	Description of Change/ SCN#	Date
1	SCN# 102104 SCJ ORG.ENG.DWG.DATE: 12-21-92	1-13-03
2	ADDED P/Cs SCN#140162 SCJ	8-29-07



SECTION B-B  
SCALE 8 : 1



DIRECTION EXITING TOOL,  
EARS UP, TO THE BACK



DIRECTION TOWARD APPLICATOR,  
EARS UP, TO THE FRONT

# UNCONTROLLED COPY

<p>THIRD ANGLE PROJECTION TOLERANCES UNLESS OTHERWISE SPECIFIED INCHES: .XX - <math>\pm</math>.030 .XXX - <math>\pm</math>.015 ANGLES: <math>\pm</math>5°</p>	<p>TOOL NO. <b>0634</b></p>	<p>Title: <b>SPADE TERMINAL</b></p>		
		<p>DO NOT SCALE DWG.</p>	<p>Drawn By: S.JOHNSON</p>	<p>Date: 1-13-03</p>
<p>ETCO Incorporated Engineered Products 25 Bellows Street Warwick, RI 02888 Phone: (401) 467-2400 Fax: (401) 467-9230 www.ETCO.com</p>		<p>Chk'd/App'd By:</p>	<p>Scale: 8X</p>	<p>Size B</p>
		<p>Dwg. No.: <b>S220 cust</b></p>		