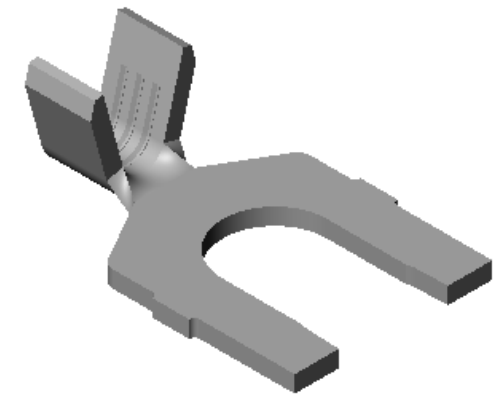
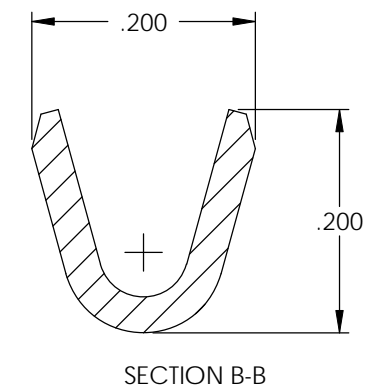
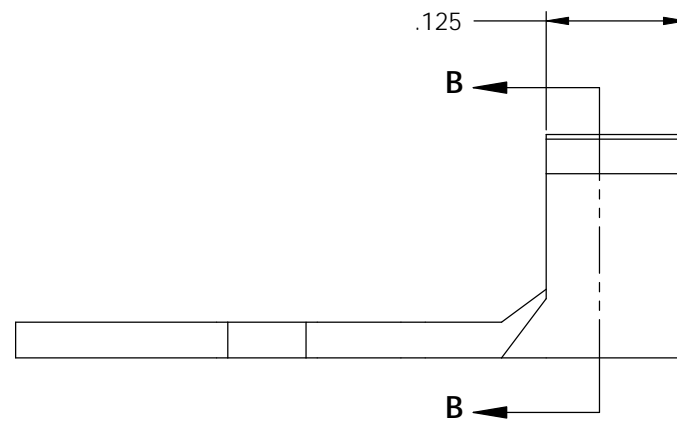
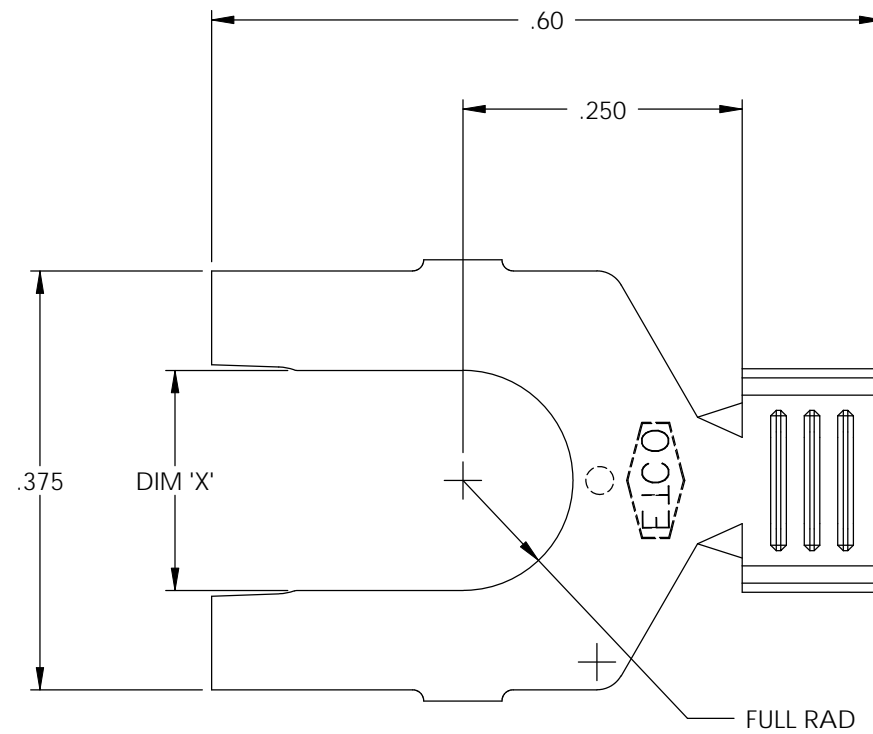

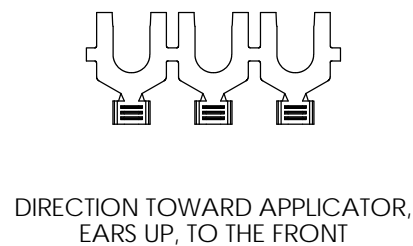
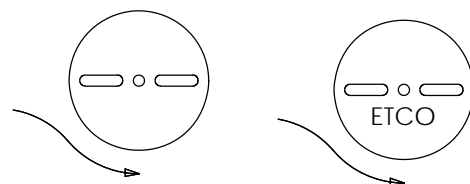


- NOTE:
 1.) MAT'L: .032 THK., BRASS,
 #2 TEMPER (HALF HARD),
 PER ETCO METAL CODE NO. 00770.
 2.) PARTS MAY BE COATED WITH A
 LIGHT FILM OF LUBRICATION
 USED IN THE MANUFACTURING
 PROCESS.
 3.) WIRE RANGE: 16-12 AWG





P/C	DESCRIPTION	DIM 'X'	MAT'L	
04321	S270-10-HB	.197	NOTE 1	X
04329	S270-6-HB	.145	NOTE 1	
04332	S270-6-THB	.145	NOTE 2	
04333	S270-8-HB	.171	NOTE 1	X
04334	S270-8-THB	.171	NOTE 2	X
04335	S270-10-THB	.197	NOTE 2	X

Rev.	Description of Change/ SCN#	Date
1	SCN# 102054 SCJ ORG.ENG.DWG.DATE: 6-27-01	10-29-02
2	ACTIVATED P/C 04333 SCJ	7-26-04
3	ADDED P/Cs SCN#140162 SCJ	8-1-07



UNCONTROLLED COPY

 THIRD ANGLE PROJECTION TOLERANCES UNLESS OTHERWISE SPECIFIED INCHES: .XX - ±.030 .XXX - ±.015 ANGLES: ±5°	TOOL NO. 0036	Title: SPADE TERMINAL	
		DO NOT SCALE DWG. Drawn By: S.JOHNSON Date: 10-29-02	Chk'd/App'd By: Scale: 6X Size: B
		Dwg. No.: S270 cust	
		ETCO Incorporated Engineered Products 25 Bellows Street Warwick, RI 02888 Phone: (401) 467-2400 Fax: (401) 467-9230 www.ETCO.com	