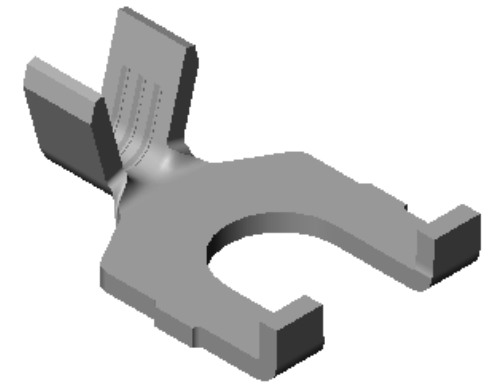
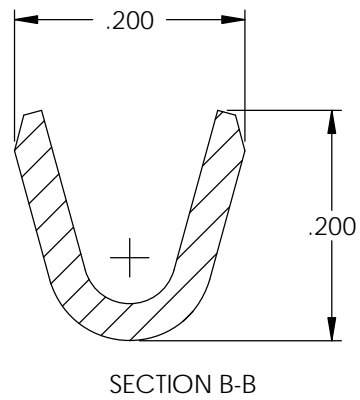
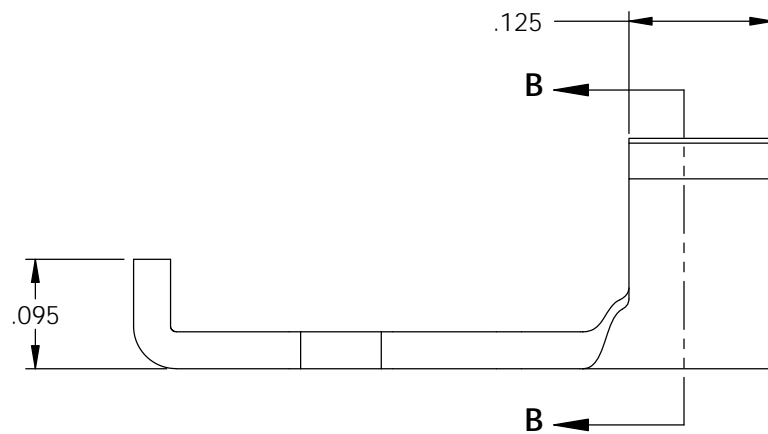
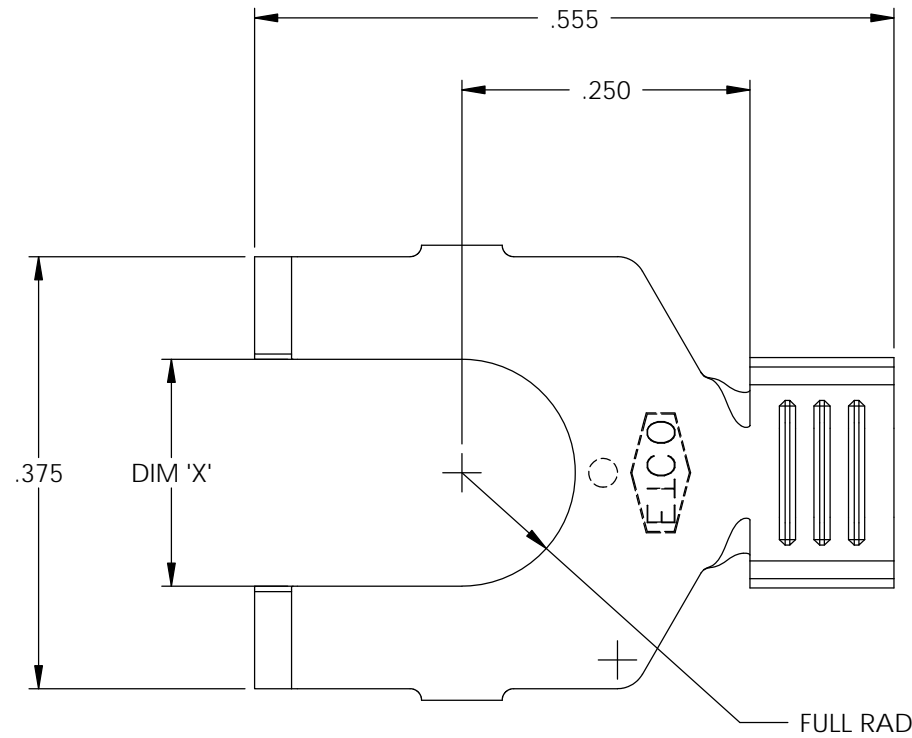
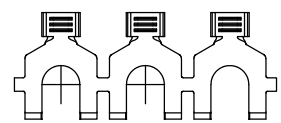


- NOTE:
 1.) MAT'L: .032 THK., BRASS,
 #2 TEMPER (HALF HARD),
 PER ETCO METAL CODE NO. 00770.
 2.) MAT'L: .032 THK., PRE-TINNED BRASS,
 #2 TEMPER (HALF HARD),
 PER ETCO METAL CODE NO. 01830.
 3.) PARTS MAY BE COATED WITH A
 LIGHT FILM OF LUBRICATION
 USED IN THE MANUFACTURING
 PROCESS.
 4.) WIRE RANGE: 16-12 AWG

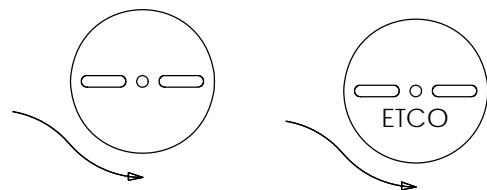


P/C	DESCRIPTION	DIM 'X'	MAT'L	UL
04315	S275-6-HB	.145	NOTE 1	X
04316	S275-6-THB	.145	NOTE 2	X
04317	S275-8-HB	.171	NOTE 1	X
04318	S275-8-THB	.171	NOTE 2	X
04319	S275-10-HB	.197	NOTE 1	X
04320	S275-10-THB	.197	NOTE 2	X

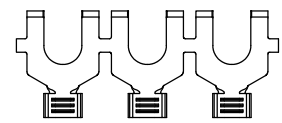
Rev.	Description of Change/ SCN#	Date
1	SCN# 102054 SCJ ORG.ENG.DWG.DATE: 6-29-94	10-29-02
2	ADDED P/Cs SCN#140162 SCJ	8-1-07



DIRECTION EXITING TOOL,
EARS UP, TO THE BACK



DIRECTION TOWARD APPLICATOR,
EARS UP, TO THE FRONT



UNCONTROLLED COPY

<p>THIRD ANGLE PROJECTION TOLERANCES UNLESS OTHERWISE SPECIFIED INCHES: .XX - ±.030 .XXX - ±.015 ANGLES: ±5°</p>	<p>TOOL NO. 0036</p>	<p>Title: SPADE TERMINAL</p>		
		<p>DO NOT SCALE DWG.</p>	<p>Drawn By: S.JOHNSON</p>	<p>Date: 10-29-02</p>
<p>ETCO Incorporated Engineered Products 25 Bellows Street Warwick, RI 02888 Phone: (401) 467-2400 Fax: (401) 467-9230 www.ETCO.com</p>		<p>Chk'd/App'd By:</p>	<p>Scale: 6X</p>	<p>Size B</p>
		<p>Dwg. No.: S275 cust</p>		