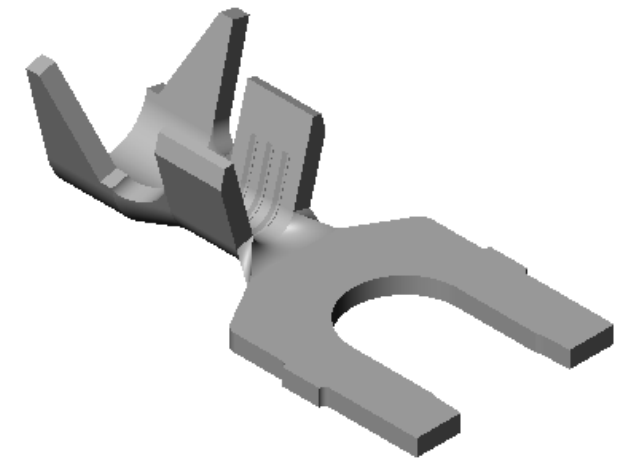
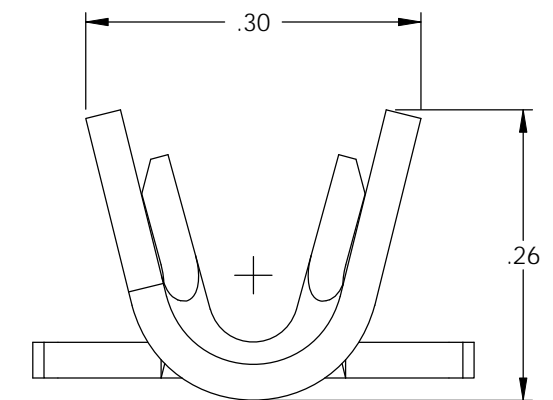
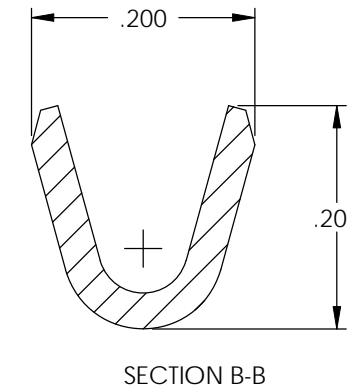
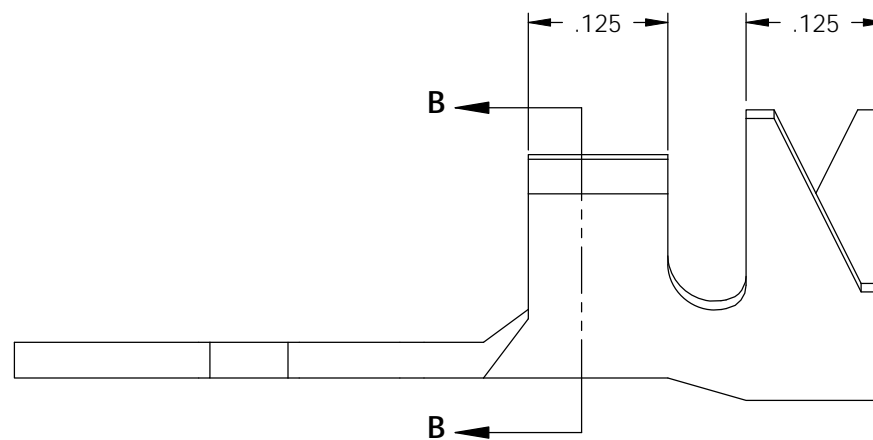
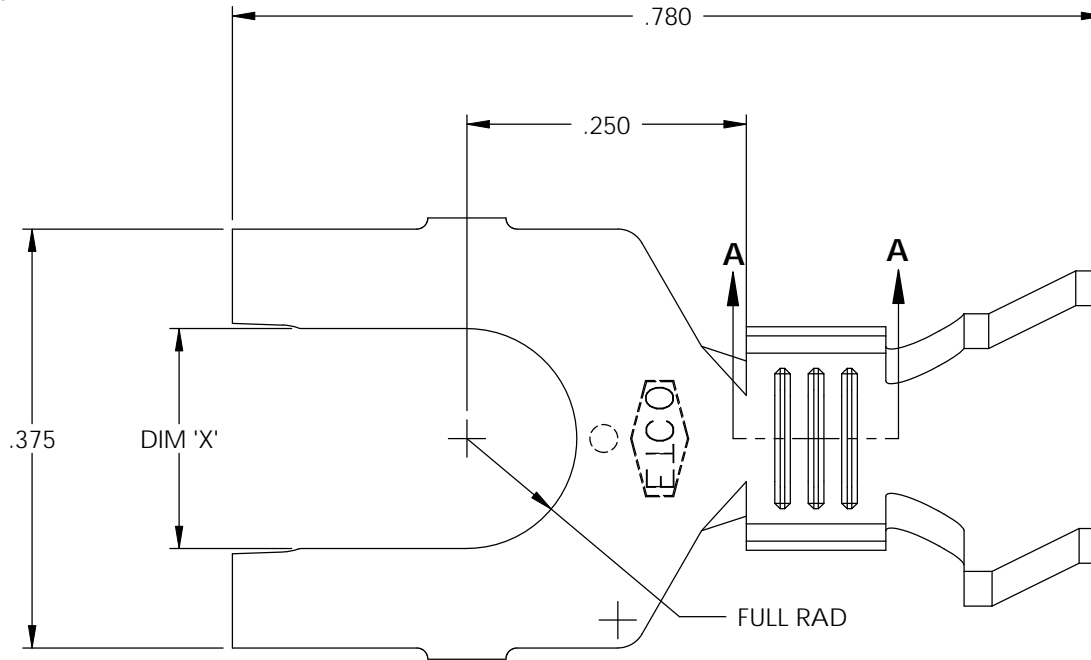


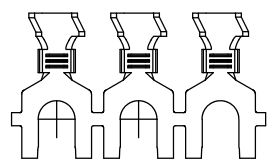
NOTE:

- 1.) MAT'L: .032 THK., BRASS, #2 TEMPER (HALF HARD), PER ETCO METAL CODE NO. 00840.
- 2.) MAT'L: .032 THK., PRE-TINNED BRASS, #2 TEMPER (HALF HARD), PER ETCO METAL CODE NO. 01840.
- 3.) PARTS MAY BE COATED WITH A LIGHT FILM OF LUBRICATION USED IN THE MANUFACTURING PROCESS.
- 4.) WIRE RANGE: 16-12 AWG
- 5.) INSUL RANGE: \varnothing .090-.140

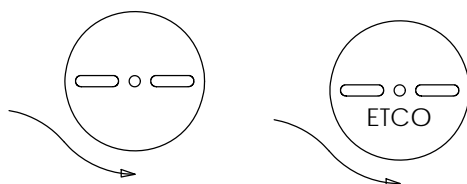


P/C	DESCRIPTION	DIM 'X'	MAT'L	UL	SP
04322	S280-6-HB	.145	NOTE 1	X	X
04323	S280-6-THB	.145	NOTE 2	X	X
04324	S280-8-HB	.171	NOTE 1	X	X
04325	S280-8-THB	.171	NOTE 2	X	X
04326	S280-10-HB	.197	NOTE 1	X	X
04327	S280-10-THB	.197	NOTE 2	X	X

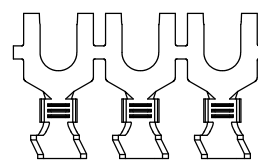
Rev.	Description of Change/ SCN#	Date
2	SCN# 102054 SCJ ORG.ENG.DWG.DATE: 4-24-98	10-29-02
3	SCN# 103153 SCJ	3-14-06
4	ADDED P/Cs SCN#140162 SCJ	8-1-07
5	SCN# 140241 SCJ	10-9-07



DIRECTION EXITING TOOL,
EARS UP, TO THE BACK



DIRECTION TOWARD APPLICATOR,
EARS UP, TO THE FRONT



UNCONTROLLED COPY

<p>THIRD ANGLE PROJECTION TOLERANCES UNLESS OTHERWISE SPECIFIED INCHES: .XX - \pm.030 .XXX - \pm.015 ANGLES: \pm5°</p>	<p>TOOL NO. 0036</p>	<p>Title: SPADE TERMINAL</p>		
		<p>DO NOT SCALE DWG.</p>	<p>Drawn By: S.JOHNSON</p>	<p>Date: 10-29-02</p>
<p>ETCO Incorporated Engineered Products 25 Bellows Street Warwick, RI 02888 Phone: (401) 467-2400 Fax: (401) 467-9230 www.ETCO.com</p>		<p>Chk'd/App'd By:</p>	<p>Scale: 6X</p>	<p>Size B</p>
		<p>Dwg. No.: S280 cust</p>		