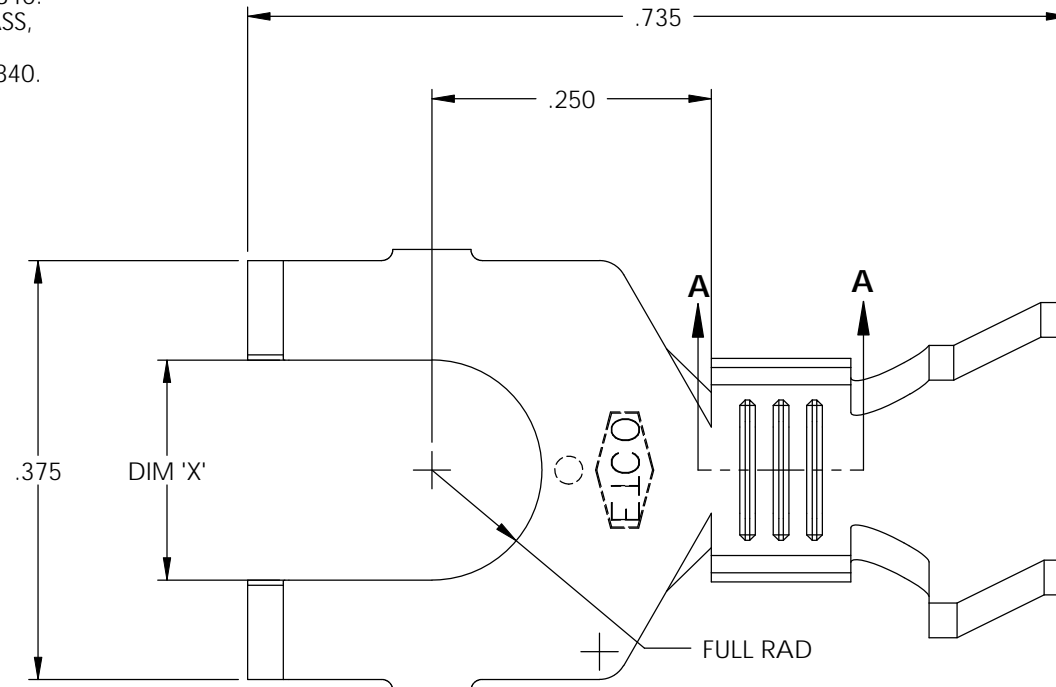
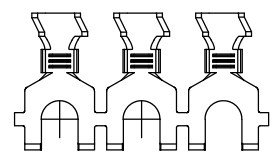
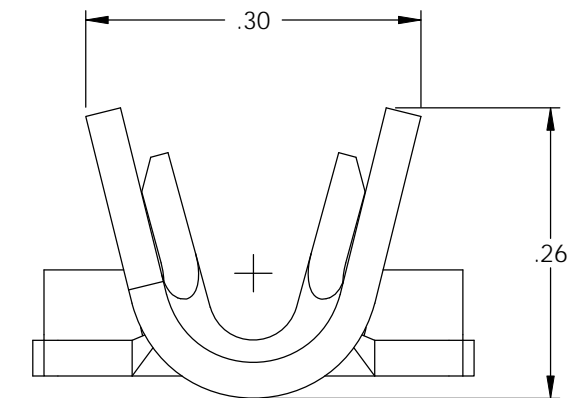
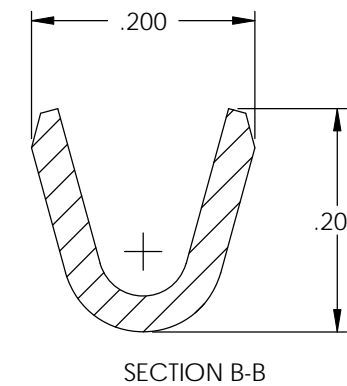
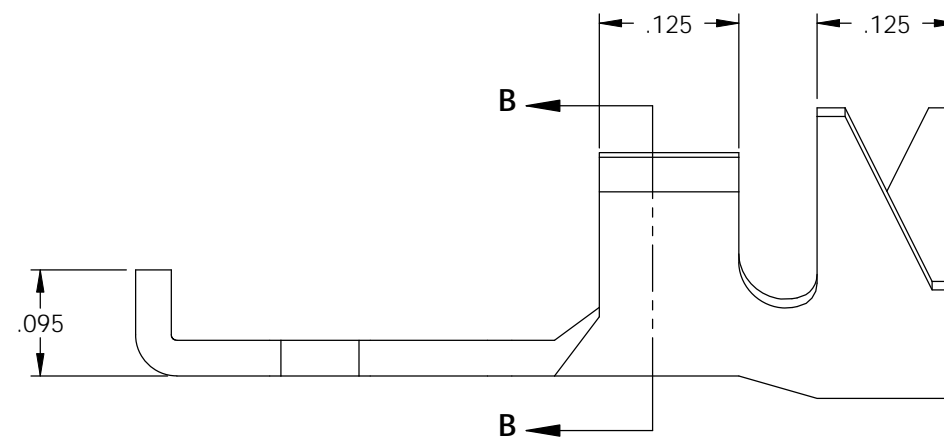
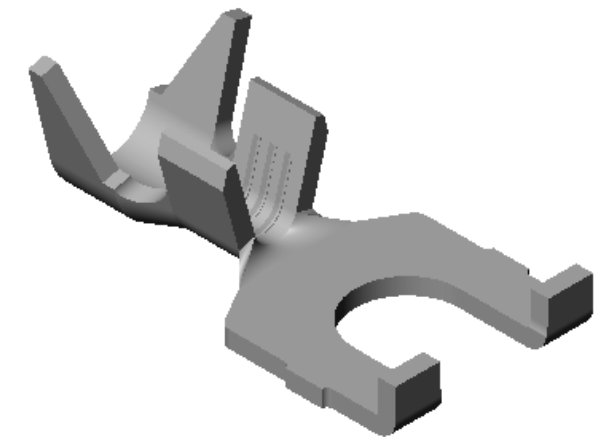


- NOTE:
- 1.) MAT'L: .032 THK., BRASS, #2 TEMPER (HALF HARD), PER ETCO METAL CODE NO. 00840.
  - 2.) MAT'L: .032 THK., PRE-TINNED BRASS, #2 TEMPER (HALF HARD), PER ETCO METAL CODE NO. 01840.
  - 3.) PARTS MAY BE COATED WITH A LIGHT FILM OF LUBRICATION USED IN THE MANUFACTURING PROCESS.
  - 4.) WIRE RANGE: 16-12 AWG
  - 5.) INSUL RANGE:  $\varnothing$ .090-.140

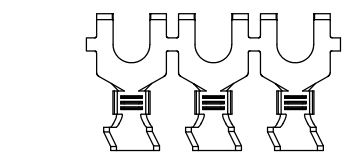
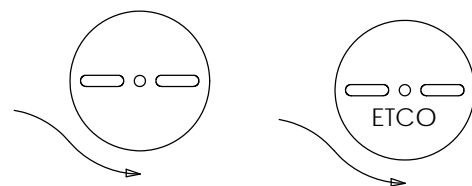


P/C	DESCRIPTION	DIM 'X'	MAT'L	UL
04328	S285-10-HB	.197	NOTE 1	X
04336	S285-6-HB	.145	NOTE 1	X
04337	S285-6-THB	.145	NOTE 2	X
04338	S285-8-HB	.171	NOTE 1	X
04339	S285-8-THB	.171	NOTE 2	X
04340	S285-10-THB	.197	NOTE 2	X

Rev.	Description of Change/ SCN#	Date
1	SCN# 102054 SCJ ORG.ENG.DWG.DATE: 4-24-98	10-29-02
2	SCN# 103153 SCJ	3-14-06



DIRECTION EXITING TOOL,  
EARS UP, TO THE BACK



DIRECTION TOWARD APPLICATOR,  
EARS UP, TO THE FRONT

## UNCONTROLLED COPY

<p>THIRD ANGLE PROJECTION</p>	<p>TOOL NO. <b>0036</b></p>	<p>Title: <b>SPADE TERMINAL</b></p>			
		<p>DO NOT SCALE DWG.</p>	<p>Drawn By: S.JOHNSON</p>	<p>Date: 10-29-02</p>	
<p>TOLERANCES UNLESS OTHERWISE SPECIFIED</p> <p>INCHES: .XX - <math>\pm</math>.030 .XXX - <math>\pm</math>.015</p> <p>ANGLES - <math>\pm</math>5°</p>		<p>ETCO Incorporated Engineered Products 25 Bellows Street Warwick, R.I. 02888 Phone: (401)467-2400 FAX: (401)467-9230 www.ETCO.com</p>	<p>Chk'd/App'd By:</p>	<p>Scale: 6:1</p>	<p>Size <b>B</b></p>
			<p>Dwg. No.: <b>S285</b></p>		