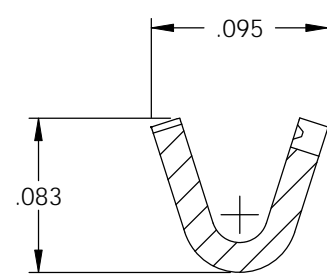
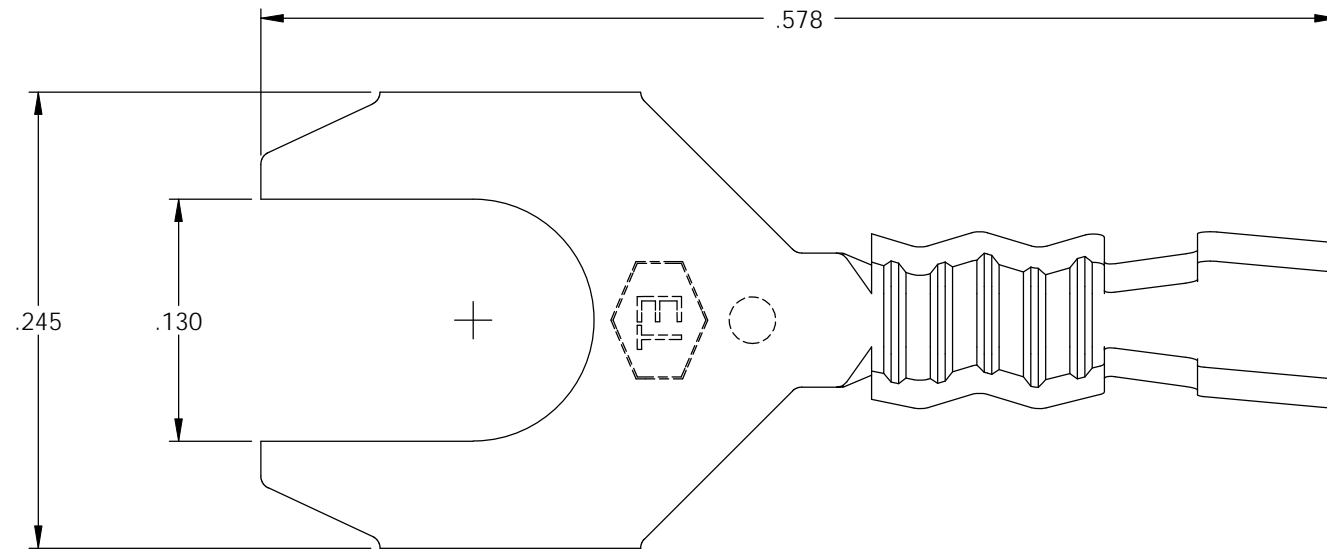


NOTE:

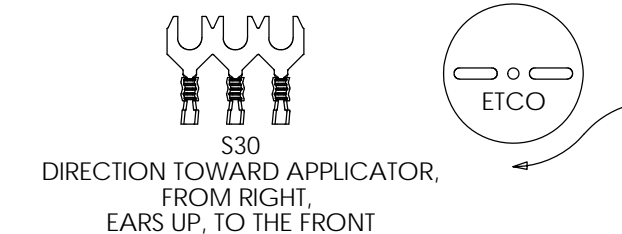
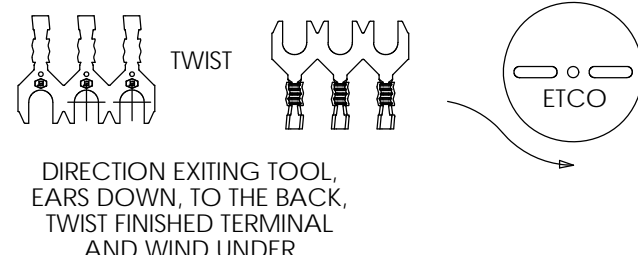
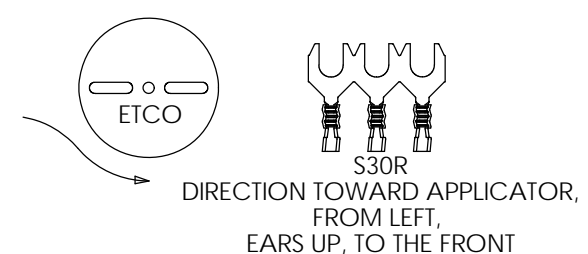
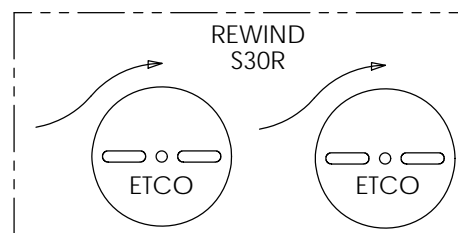
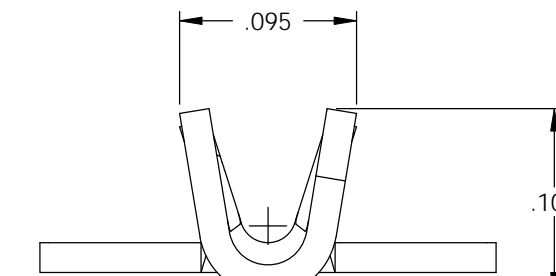
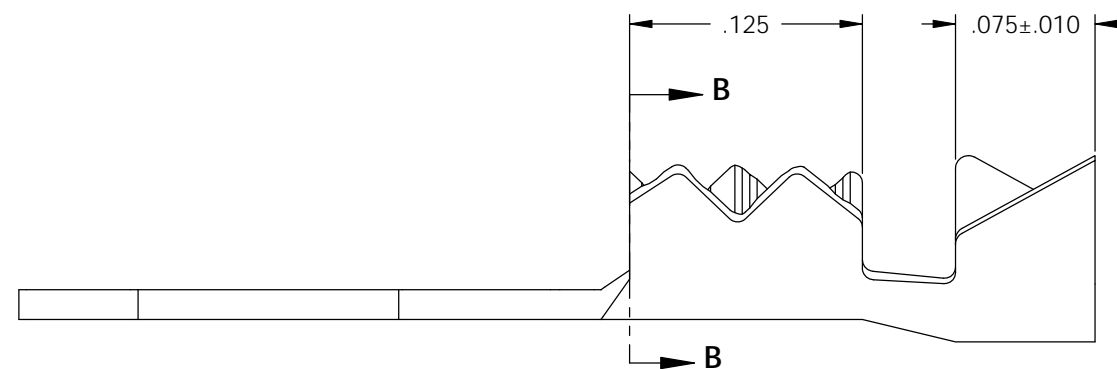
- 1.) MAT'L: .016 THK., BRASS, #2 TEMPER (HALF HARD), PER ETCO METAL CODE NO. 00081.
- 2.) MAT'L: .016 THK., PRE-TINNED BRASS, #2 TEMPER (HALF HARD), PER ETCO METAL CODE NO. 01110.
- 3.) PARTS MAY BE COATED WITH A LIGHT FILM OF LUBRICATION USED IN THE MANUFACTURING PROCESS.
- 4.) WIRE RANGE: 26-22 AWG
- 5.) INSUL RANGE: UP TO \varnothing .050

P/C	DESCRIPTION	REWIND	MAT'L	UL	SP
03066	S30-130-HB	NO	NOTE 1	X	X
03067	S30-130-THB	NO	NOTE 2	X	X
03068	S30R-130-THB	YES	NOTE 2	X	X

Rev.	Description of Change/ SCN#	Date
1	SCN# 102057 SCJ ORG.ENG.DWG.DATE: 11-22-92	11-15-02
2	SCN# 140199 SCJ	6-29-07
3	SCN# 140361 JMR	5-13-08



SECTION B-B
SCALE 10 : 1



UNCONTROLLED COPY

<p>THIRD ANGLE PROJECTION TOLERANCES UNLESS OTHERWISE SPECIFIED INCHES: .XX - ±.030 .XXX - ±.015 ANGLES: ±5°</p>	<p>TOOL NO. 0057</p>	<p>Title: PIERCING SPADE TERMINAL</p>	
		<p>ETCO Incorporated Engineered Products 25 Bellows Street Warwick, RI 02888 Phone: (401) 467-2400 Fax: (401) 467-9230 www.ETCO.com</p>	<p>DO NOT SCALE DWG.</p> <p>Drawn By: S.JOHNSON Date: 11-15-02</p>
		<p>Chk'd/App'd By:</p>	<p>Scale: 10X Size: B</p>
		<p>Dwg. No.: S30 & S30R cust</p>	