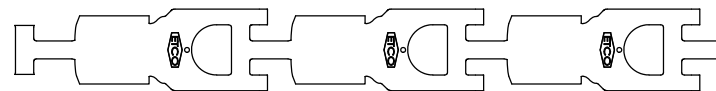
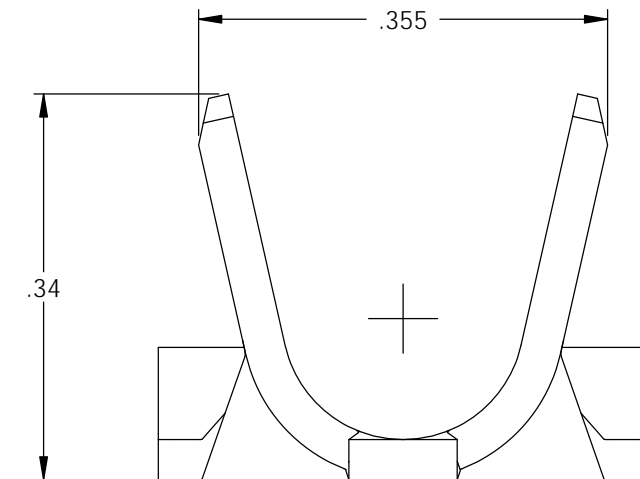
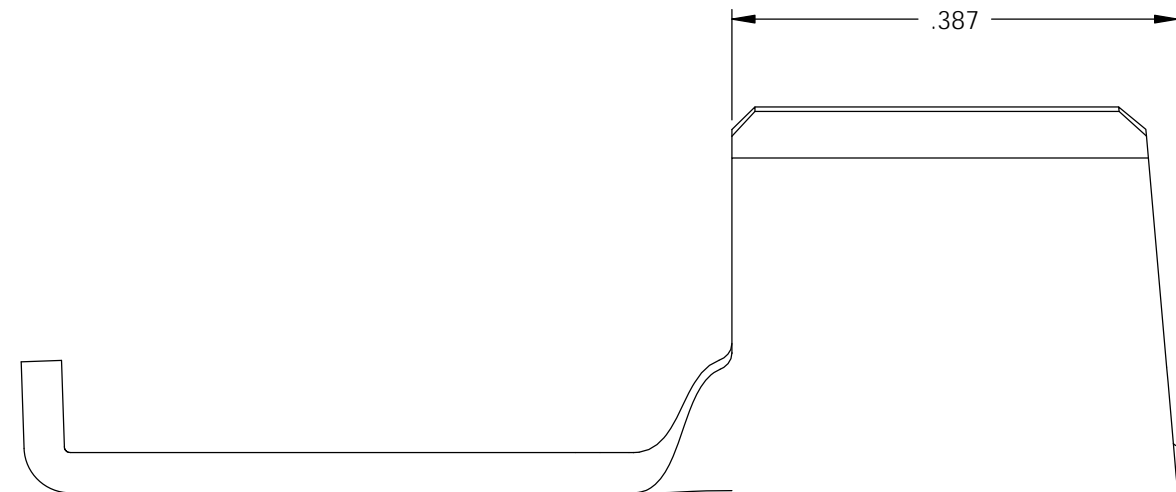
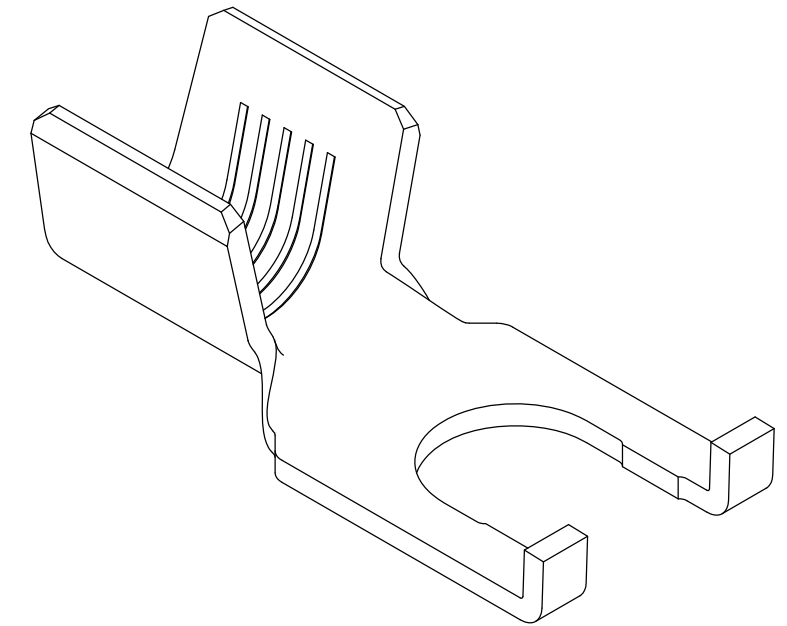
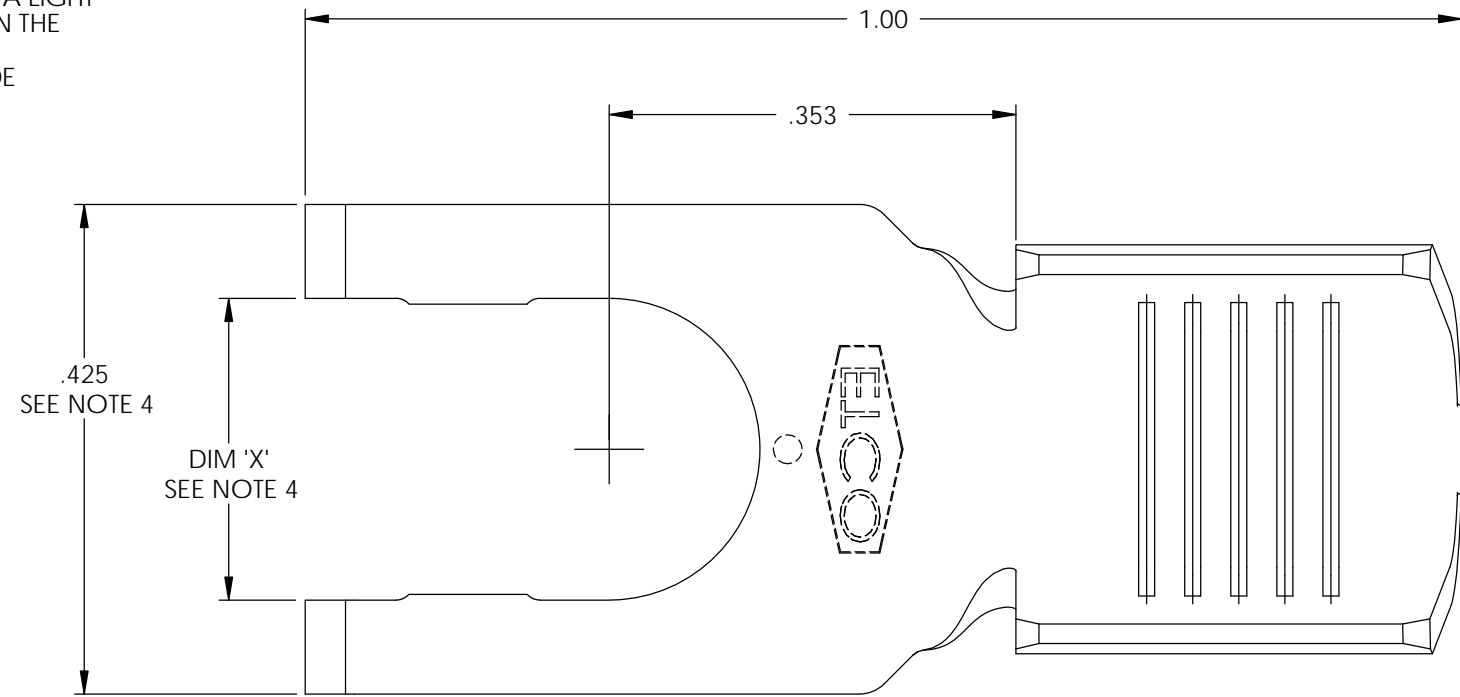


- NOTE:
- MAT'L: .035 THK., BRASS, #2 TEMPER (HALF HARD), PER ETCO METAL CODE NO. 05085.
  - MAT'L: .035 THK., PRE-TINNED BRASS, #2 TEMPER (HALF HARD), PER ETCO METAL CODE NO. 01871.
  - PARTS MAY BE COATED WITH A LIGHT FILM OF LUBRICATION USED IN THE MANUFACTURING PROCESS.
  - DIMENSIONS DO NOT INCLUDE BULGE DUE TO FORMING.
  - .0015 BURR ALLOWED.
  - WIRE RANGE: 8-6 AWG.

P/C	DESCRIPTION	DIM 'X'	MAT'L
04611	S417E-262-HB	.262	NOTE 1
04614	S417E-10-HB	.197	NOTE 1

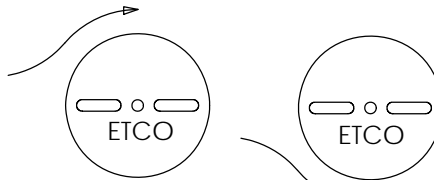
Rev.	Description of Change/ SCN#	Date
1	REDRAWN ON SOLIDWORKS NO CHANGES SCJ ORG.ENG.DWG.DATE: 1-2-96	3-10-03
2	ECR# 5038 SCJ	3/23/18



DIRECTION EXITING TOOL,  
EARS DOWN, TO THE LEFT



DIRECTION TOWARD APPLICATOR,  
EARS UP, TO THE RIGHT



THIS PRINT IS THE PROPERTY OF ETCO INCORPORATED. NO PART OF THIS DESIGN MAY BE USED IN ANY WAY WITHOUT WRITTEN CONSENT FROM ETCO INCORPORATED.

## UNCONTROLLED COPY

<p>THIRD ANGLE PROJECTION TOLERANCES UNLESS OTHERWISE SPECIFIED INCHES: .XX - ±.030 .XXX - ±.015 ANGLES: ±5°</p>	<p>TOOL NO. <b>0790</b></p>	<p>Title: <b>SPADE TERMINAL</b></p>		
		<p>DO NOT SCALE DWG.</p>	<p>Drawn By: S.JOHNSON</p>	<p>Date: 3-10-03</p>
<p>ETCO Incorporated Engineered Products 25 Bellows Street Warwick, RI 02888 Phone: (401) 467-2400 Fax: (401) 467-9230 www.ETCO.com</p>		<p>Chk'd/App'd By:</p>	<p>Scale: 6X</p>	<p>Size B</p>
		<p>Dwg. No.:</p>	<p><b>S417E cust</b></p>	