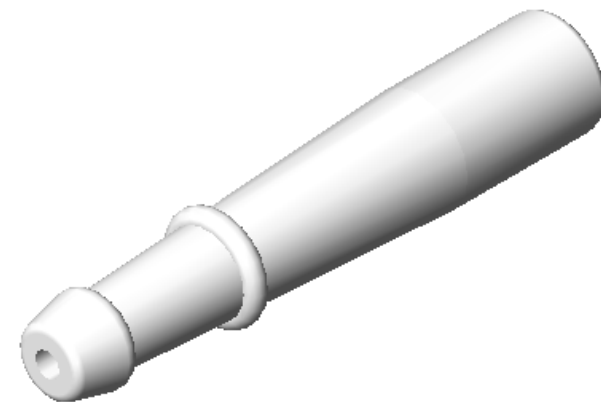
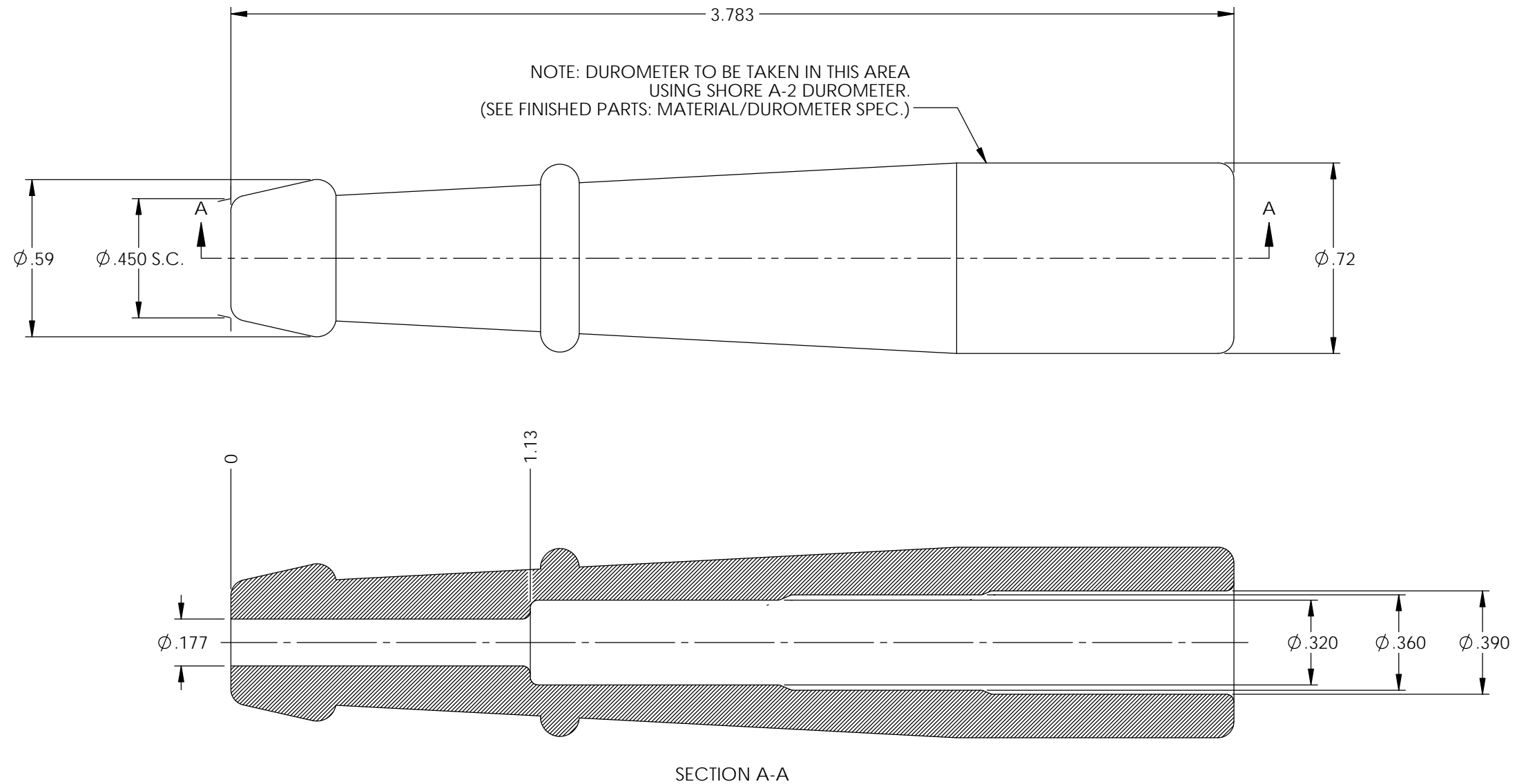


P/C	DESCRIPTION	COLOR	MATERIAL	TEMPERATURE
18028	SB29-5-BS	BLACK	SILICONE	400°

Rev.	Description of Change/ SCN#	Date
1	Redrawn in SW from ACAD Org.Eng.Dwg.Date: 4/29/93	7/23/19

NOTE:  
FOR MAXIMUM PERFORMANCE AND RELIABILITY,  
ALWAYS USE ETCO ENGINEERED IGNITION TERMINALS  
WITH ETCO AUTOMOTIVE INSULATORS.



## UNCONTROLLED COPY

<p>THIRD ANGLE PROJECTION TOLERANCES UNLESS OTHERWISE SPECIFIED INCHES: .XX - <math>\pm .030</math> .XXX - <math>\pm .015</math> ANGLES: <math>\pm 5^\circ</math></p>	<p>TOOL NO. <b>2110</b></p>	<p>Title: <b>Straight Boot - 5mm</b></p>		
	<p><b>ETCO</b></p>	<p>DO NOT SCALE DWG.</p>	<p>Drawn By: <b>S.Johnson</b></p>	<p>Date: <b>7/23/19</b></p>
<p>ETCO Incorporated Engineered Products 25 Bellows Street Warwick, RI 02888 Phone: (401) 467-2400 Fax: (401) 467-9230 www.ETCO.com</p>		<p>Design Controlled By: <b>ETCO</b></p>	<p>Scale: <b>2X</b></p>	<p>Size <b>B</b></p>
		<p>Dwg. No.: <b>SB29-5 cust</b></p>		