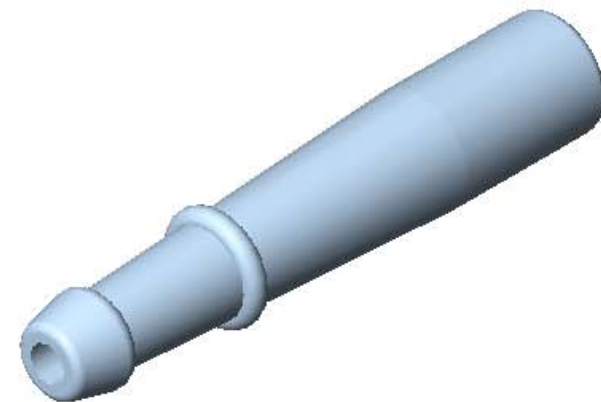
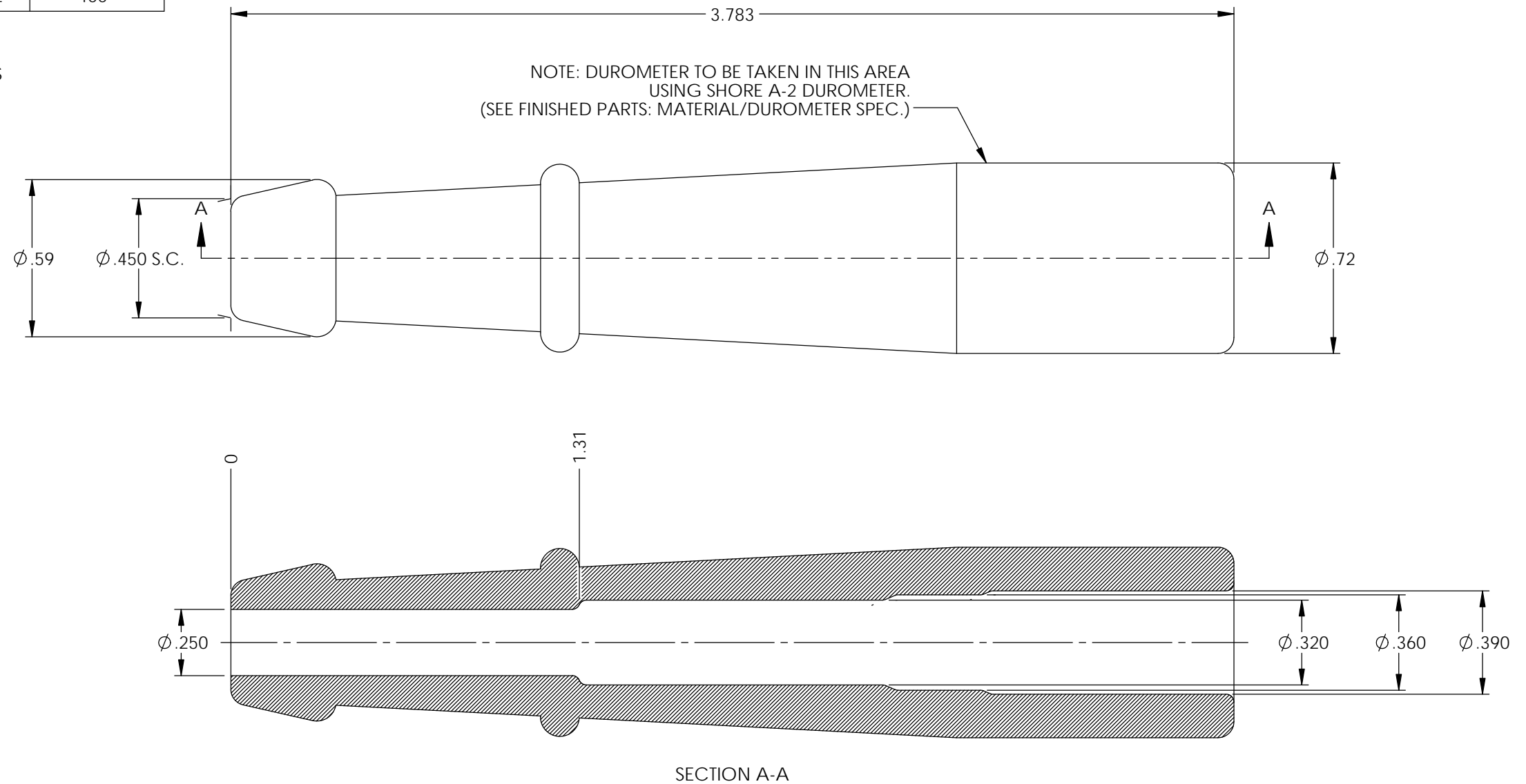


P/C	DESCRIPTION	COLOR	MATERIAL	TEMPERATURE
18017	SB29-BS	BLACK	SILICONE	400°
18055	SB29-GS/HT	GREY	SILICONE	500°
18018	SB29-RS	RED	SILICONE	400°
18022	SB29-VS	LIGHT BLUE	SILICONE	400°
18047	SB29-VS/RB-2752	ROYAL BLUE	SILICONE	400°

Rev.	Description of Change/ SCN#	Date
1	Redrawn in SW from ACAD Org.Eng.Dwg.Date: 4/29/93	7/23/19

NOTE:
FOR MAXIMUM PERFORMANCE AND RELIABILITY,
ALWAYS USE ETCO ENGINEERED IGNITION TERMINALS
WITH ETCO AUTOMOTIVE INSULATORS.



UNCONTROLLED COPY

 THIRD ANGLE PROJECTION TOLERANCES UNLESS OTHERWISE SPECIFIED INCHES: .XX - $\pm .030$.XXX - $\pm .015$ ANGLES: $\pm 5^\circ$	TOOL NO. 2110	Title: Straight Boot	
	 ETCO	DO NOT SCALE DWG. ETCO Incorporated Engineered Products 25 Bellows Street Warwick, RI 02888 Phone: (401) 467-2400 Fax: (401) 467-9230 www.ETCO.com	Drawn By: S.Johnson Design Controlled By: ETCO Dwg. No.: SB29 cust