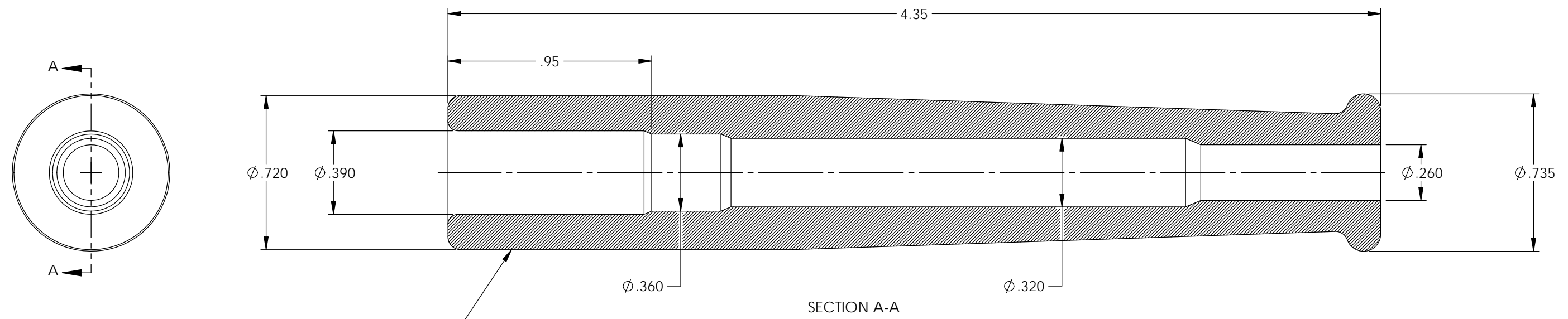
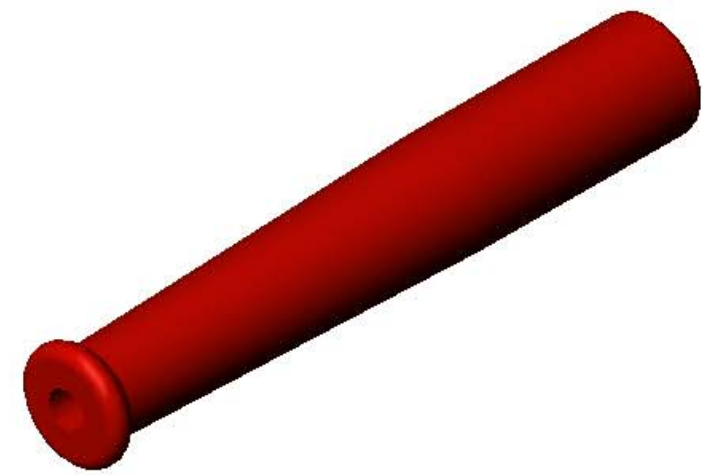


P/C	DESCRIPTION	COLOR	MATERIAL	TEMPERATURE
16029	SB3-BS	BLACK	SILICONE	400°
16153	SB3-RS	RED	SILICONE	400°
16167	SB3-VS/RB-2752	ROYAL BLUE	SILICONE	400°
18020	SB3-OS	ORANGE	SILICONE	400°
18051	SB3-VS/MB-4757	MEDIUM BLUE	SILICONE	400°
18064	SB3-GS/HT	GREY	SILICONE	500°

Rev.	Description of Change/ SCN#	Date
1	Redrawn in SW from ACAD Org.Eng.Dwg.Date: 4/05/89	7/18/19

NOTE:
FOR MAXIMUM PERFORMANCE AND RELIABILITY,
ALWAYS USE ETCO ENGINEERED IGNITION TERMINALS
WITH ETCO AUTOMOTIVE INSULATORS.



NOTE: DUROMETER TO BE TAKEN IN THIS AREA
USING SHORE A-2 DUROMETER.
(SEE FINISHED PARTS: MATERIAL/DUROMETER SPEC.)

UNCONTROLLED COPY

 THIRD ANGLE PROJECTION TOLERANCES UNLESS OTHERWISE SPECIFIED INCHES: .XX - ±.030 .XXX - ±.015 ANGLES: ±2°	TOOL NO. 2226	Title: <h3 style="text-align: center;">Straight Boot</h3>		
		DO NOT SCALE DWG.	Drawn By: S.Johnson	Date: 7/18/19
		ETCO Incorporated Engineered Products 25 Bellows Street Warwick, RI 02888 Phone: (401) 467-2400 Fax: (401) 467-9230 www.ETCO.com	Design Control By: ETCO	Scale: 2X Size: B
		Dwg. No.: SB3 cust		