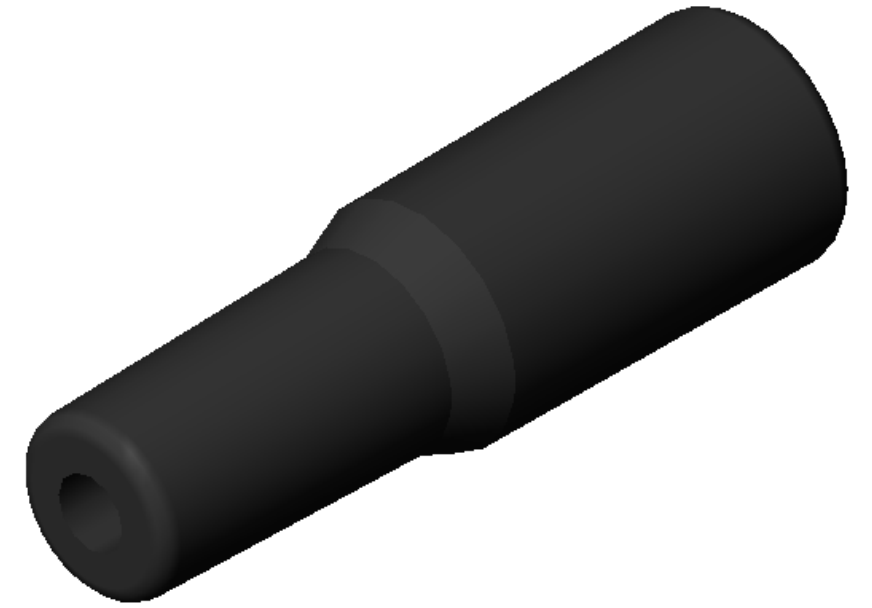
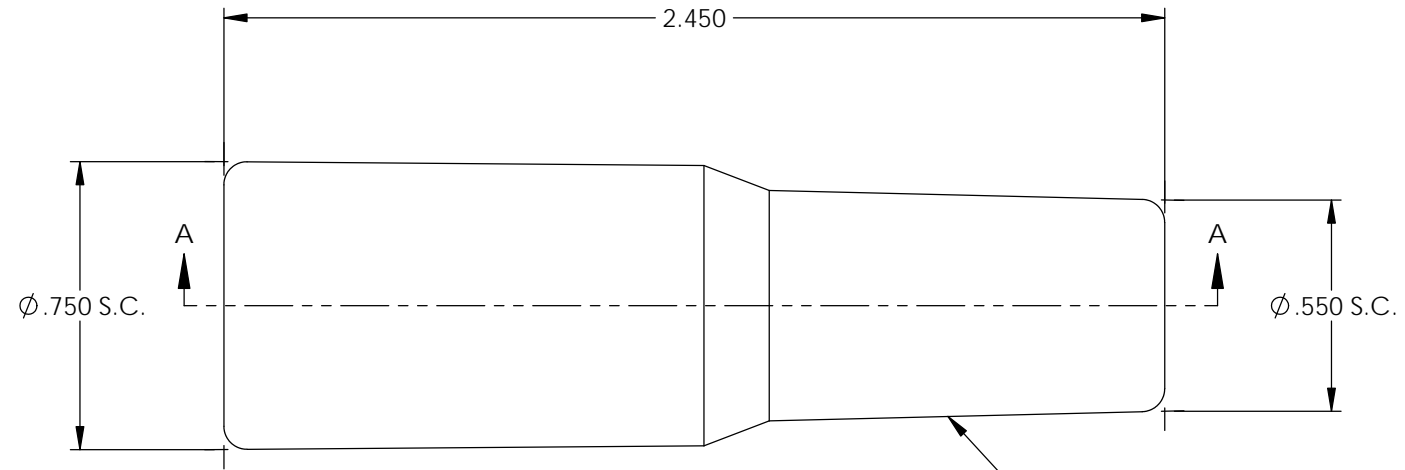


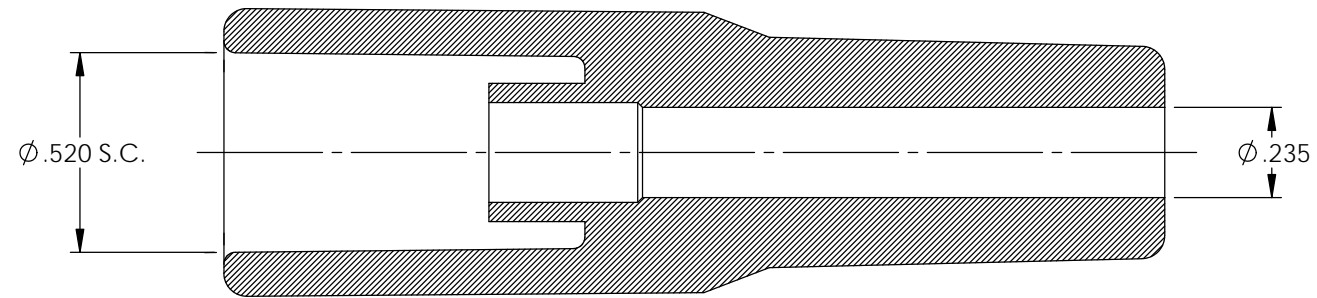
P/C	DESCRIPTION	MAT'L	COLOR	TEMPERATURE
18093	SB34-BS	SILICONE	BLACK	400°

Rev.	Description of Change/ SCN#	Date
1	Redrawn in SW from ACAD Org.Eng.Dwg.Date: 9/22/94	2/20/19

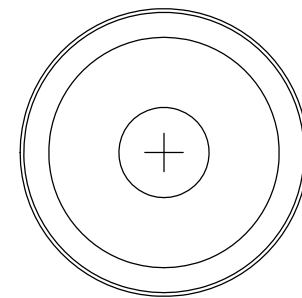
NOTE:
FOR MAXIMUM PERFORMANCE AND RELIABILITY,
ALWAYS USE ETCO ENGINEERED IGNITOR TERMINALS
WITH ETCO AUTOMOTIVE INSULATORS.



DUROMETER TO BE TAKEN IN THIS AREA USING
SHORE A-2 DUROMETER.
(SEE FINISHED PARTS: MAT'L/DUROMETER SPEC.)



SECTION A-A



UNCONTROLLED COPY

<p>THIRD ANGLE PROJECTION TOLERANCES UNLESS OTHERWISE SPECIFIED INCHES: .XX - ±.030 .XXX - ±.015 ANGLES: ±5°</p>	<p>MOLD NO.</p> <p>2152</p>	<p>Title: Distributor Boot</p>		
		<p>DO NOT SCALE DWG.</p>	<p>Drawn By: S.Johnson</p>	<p>Date: 2/20/19</p>
<p>ETCO Incorporated Engineered Products 25 Bellows Street Warwick, RI 02888 Phone: (401) 467-2400 Fax: (401) 467-9230 www.ETCO.com</p>		<p>Design Control By: ETCO</p>	<p>Scale: 2X</p>	<p>Size B</p>
		<p>Dwg. No.: SB34 cust</p>		