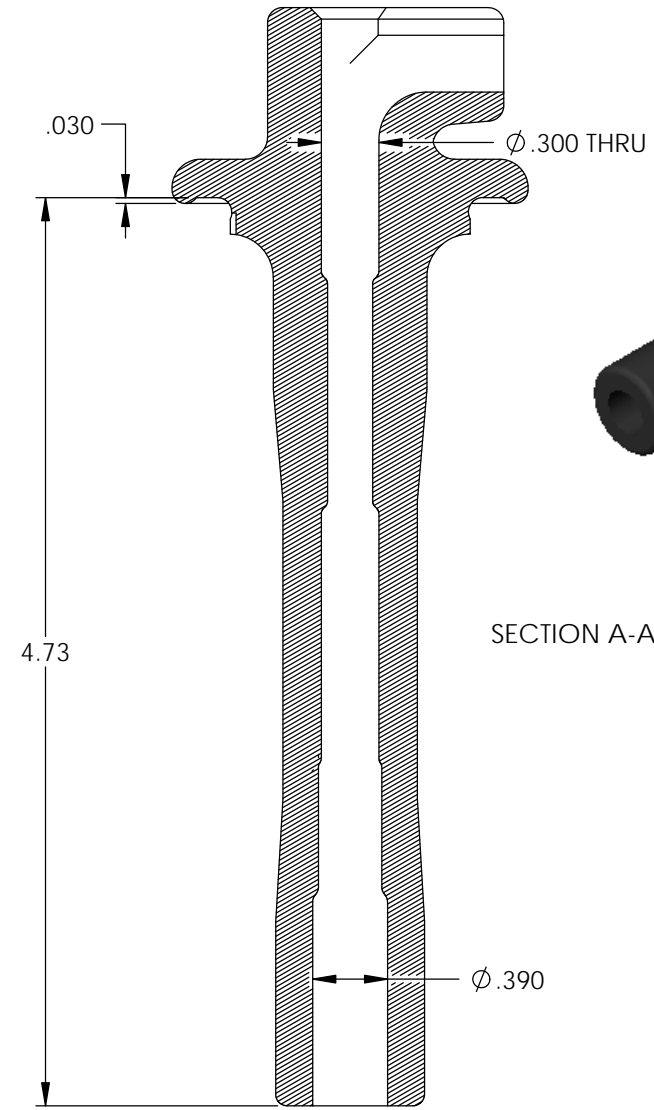
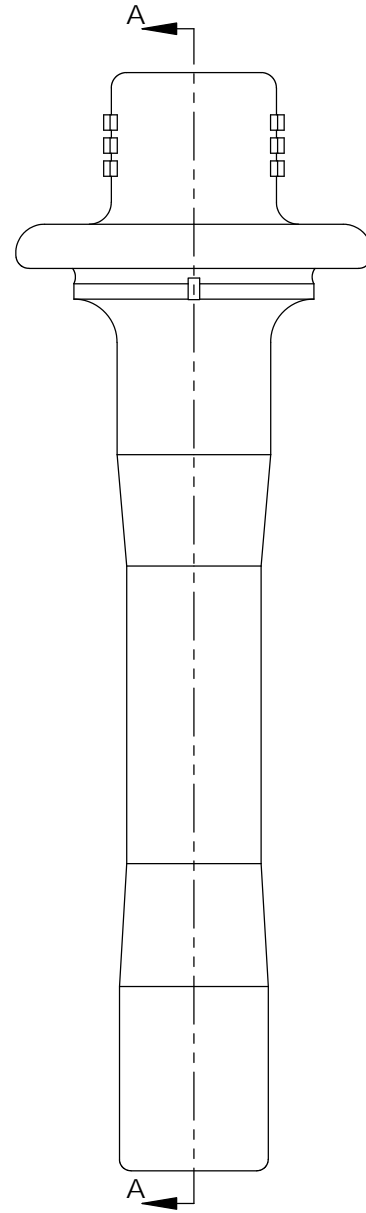
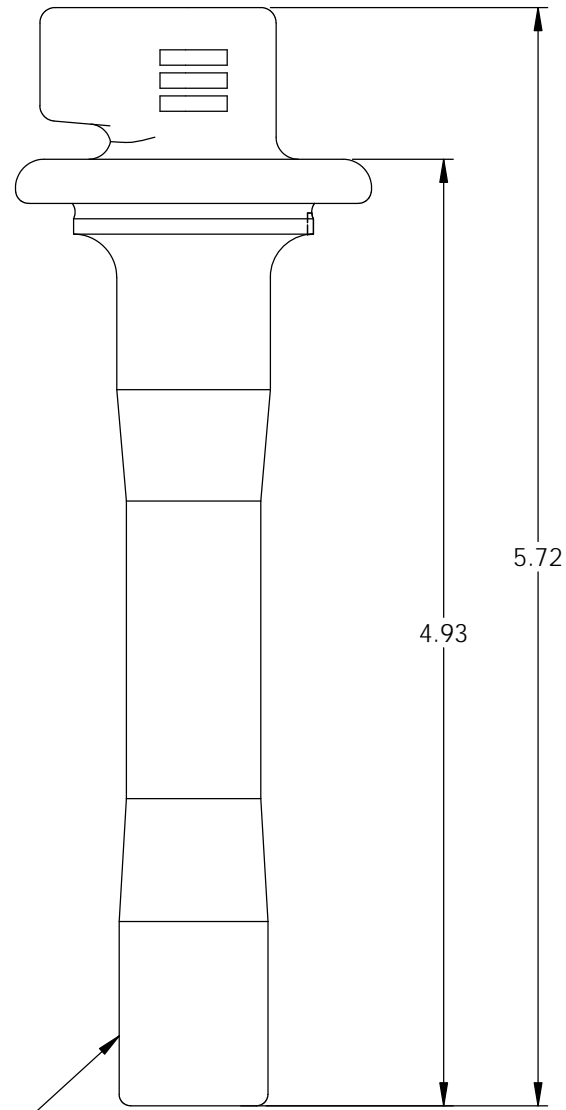
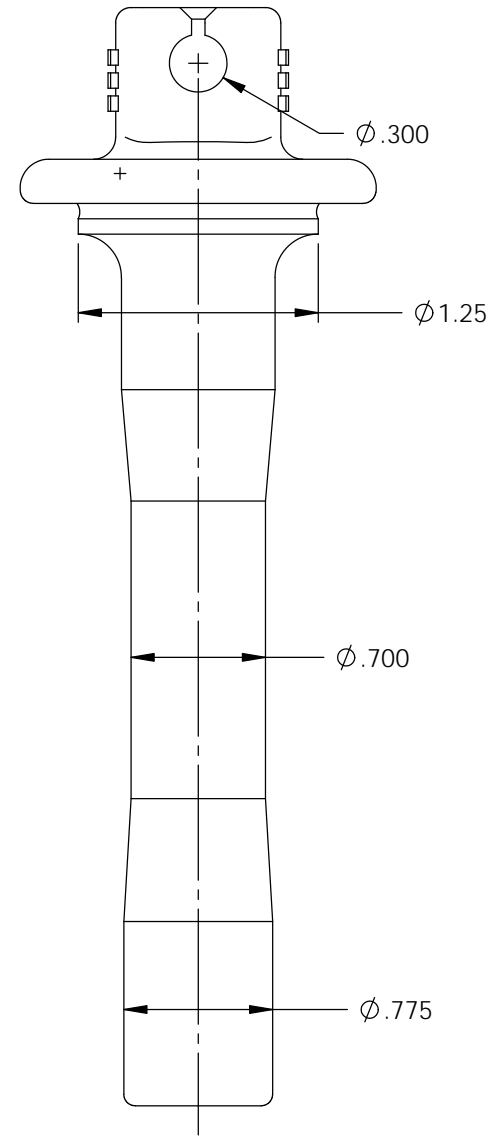
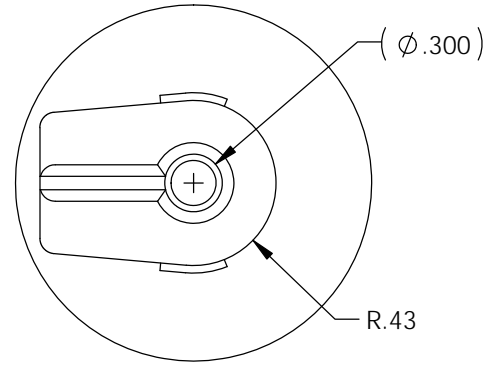


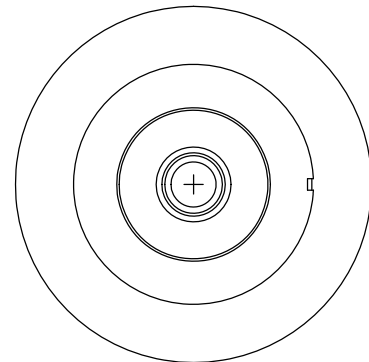
P/C	DESCRIPTION	MAT'L	COLOR	TEMPERATURE
18034	SB37-BS	SILICONE	BLACK	400°

NOTE: FOR MAXIMUM PERFORMANCE AND RELIABILITY, ALWAYS USE ETCO ENGINEERED IGNITION TERMINALS WITH ETCO AUTOMOTIVE INSULATORS.

Rev.	Description of Change/ SCN#	Date
1	Redraw in ACAD from SW Org.Eng.Dwg.Date: 8/16/95	10/16/19



DUROMETER TO BE TAKEN IN THIS AREA USING SHORE A-2 DUROMETER. (SEE FINISHED PARTS: MAT'L/DUROMETER SPEC.)



UNCONTROLLED COPY

 THIRD ANGLE PROJECTION TOLERANCES UNLESS OTHERWISE SPECIFIED INCHES: .XX - ±.030 .XXX - ±.015 ANGLES: ±2°	MOLD NO. 2154	Title: Straight Boot	
		DO NOT SCALE DWG.	Drawn By: S.Johnson Design Control By: ETCO Dwg. No.: SB37 cust
	ETCO Incorporated Engineered Products 25 Bellows Street Warwick, RI 02888 Phone: (401) 467-2400 Fax: (401) 467-9230 www.ETCO.com	Date: 10/16/19 Scale: 1X Size: B	