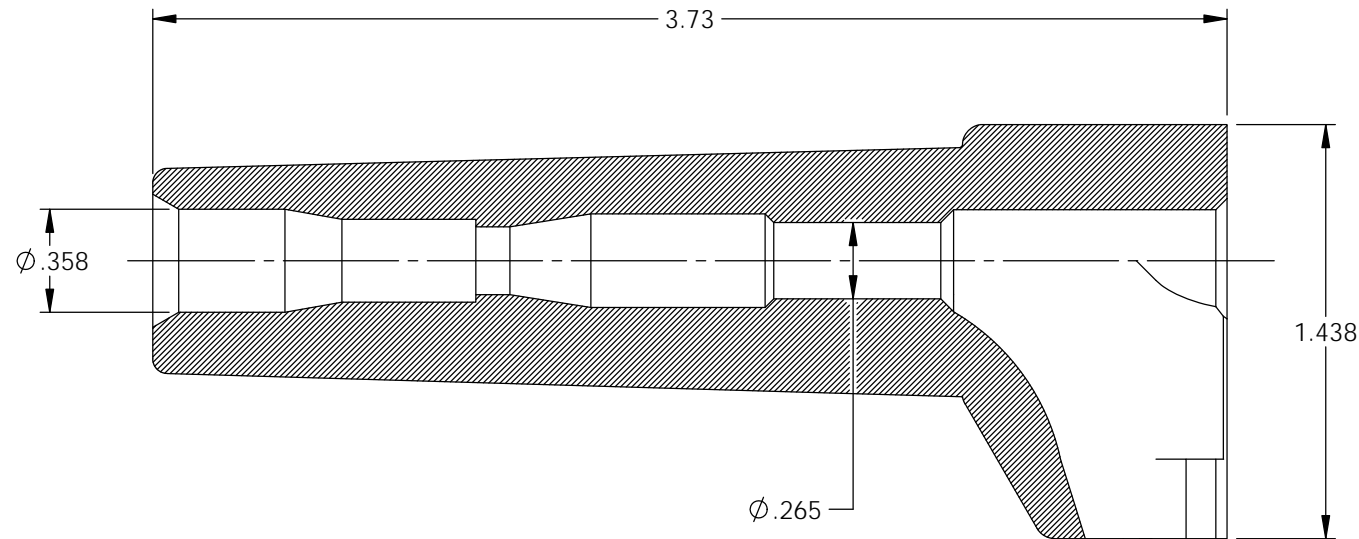


NOTES:

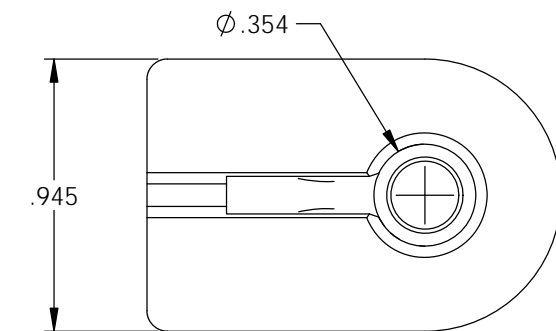
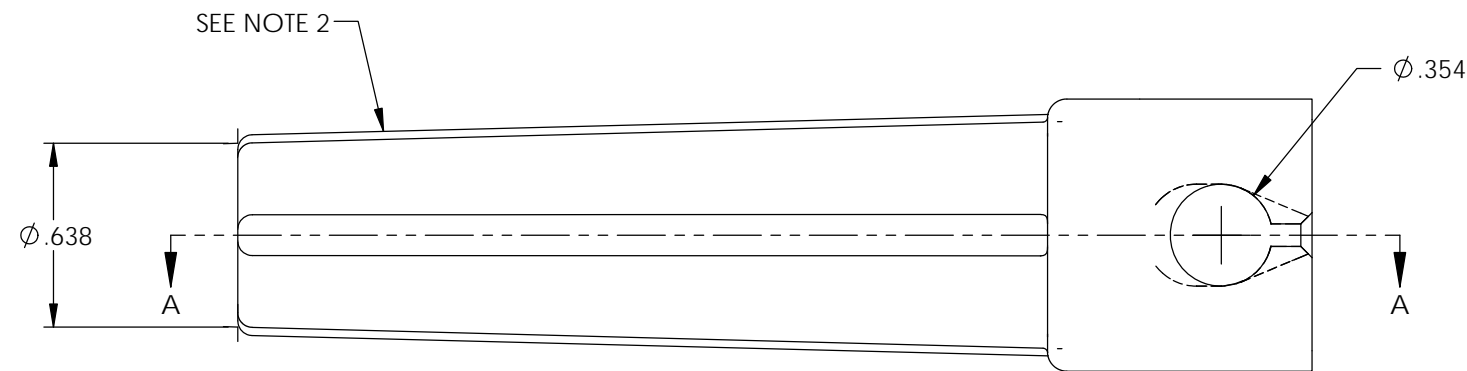
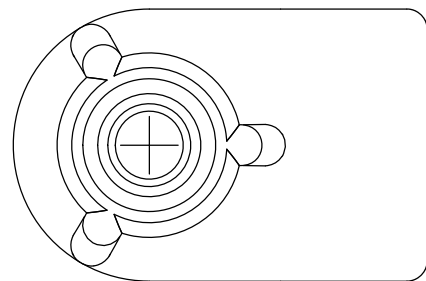
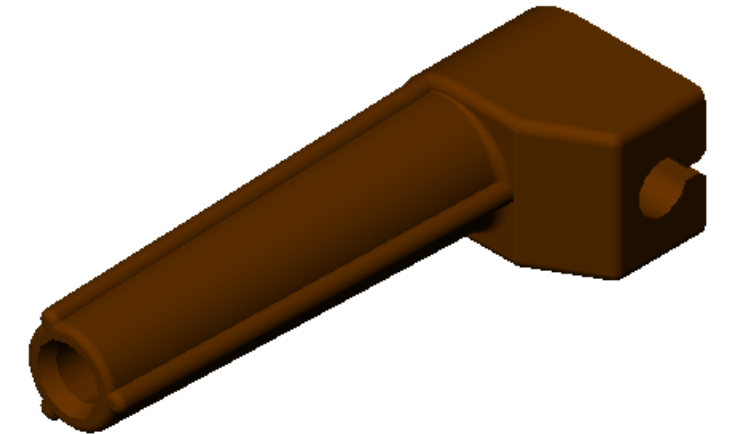
1. MATERIAL: SILICONE (TEMPERATURE 500°).
2. DUROMETER TO BE TAKEN IN THIS AREA USING SHORE A-2 DUROMETER. (SEE FINISHED PARTS: MAT'L/DUROMETER SPEC.)
3. FOR MAXIMUM PERFORMANCE AND RELIABILITY, ALWAYS USE ETCO ENGINEERED IGNITOR TERMINALS WITH ETCO AUTOMOTIVE INSULATORS.

P/C	DESCRIPTION	MAT'L	COLOR
16111	SB38-BRS/HT	NOTE 1	BROWN

Rev.	Description of Change/ SCN#	Date
1	Redrawn in SW from ACAD Org.Eng.Dwg.Date: 1/17/95	2/11/19



SECTION A-A



# UNCONTROLLED COPY

<p>THIRD ANGLE PROJECTION TOLERANCES UNLESS OTHERWISE SPECIFIED INCHES: .XX - ±.030 .XXX - ±.015 ANGLES: ±5°</p>	<p>MOLD NO.</p> <p><b>2138</b></p>	<p>Title: <b>Spark Plug Boot - 8mm</b></p>		
		<p>DO NOT SCALE DWG.</p>	<p>Drawn By: <b>S.Johnson</b></p>	<p>Date: <b>2/11/19</b></p>
<p>ETCO Incorporated Engineered Products 25 Bellows Street Warwick, RI 02888 Phone: (401) 467-2400 Fax: (401) 467-9230 www.ETCO.com</p>		<p>Design Control By: <b>ETCO</b></p>	<p>Scale: <b>3:2</b></p>	<p>Size <b>B</b></p>
		<p>Dwg. No.: <b>SB38</b></p>		