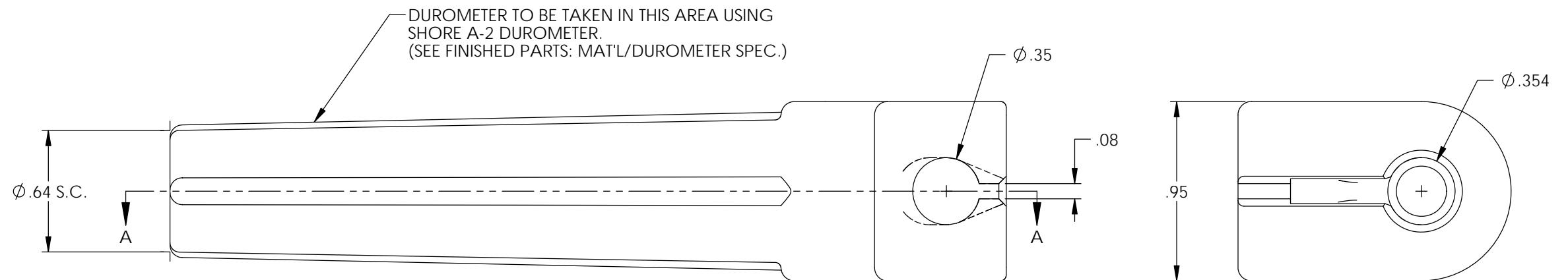
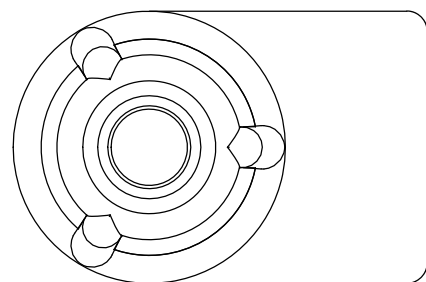
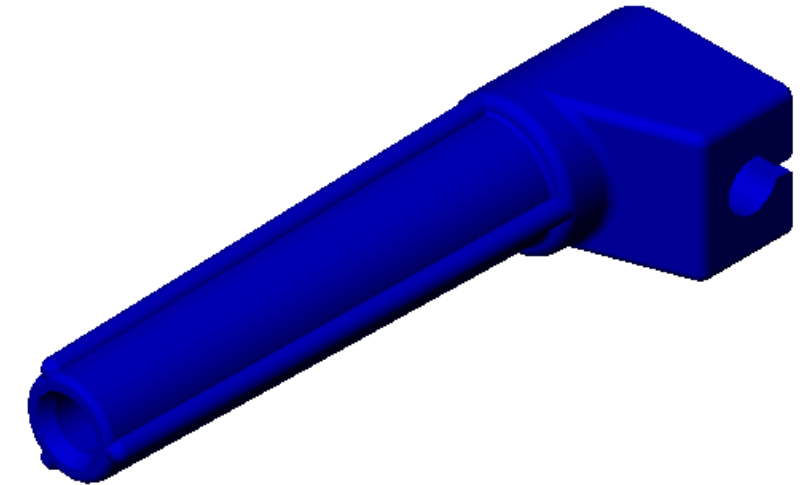
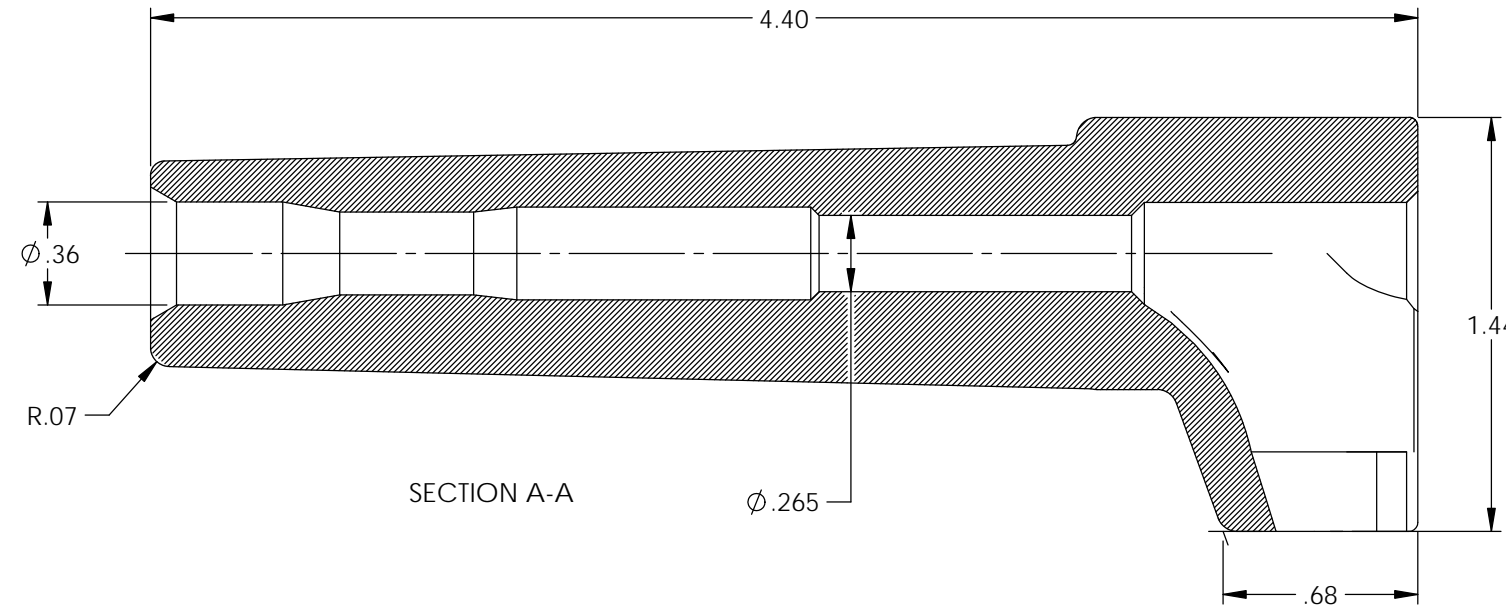


| P/C   | DESCRIPTION     | MAT'L    | COLOR      | TEMPERATURE |
|-------|-----------------|----------|------------|-------------|
| 16116 | SB39-BRS/HT     | SILICONE | BROWN      | 500°        |
| 16123 | SB39-VS-RB-2752 | SILICONE | ROYAL BLUE | 400°        |

| Rev. | Description of Change/ SCN#                          | Date     |
|------|--|----------|
| 1    | Redrawn in SW from ACAD<br>Org.Eng.Dwg.Date: 1/17/95 | 10/16/19 |

NOTE: FOR MAXIMUM PERFORMANCE AND RELIABILITY,  
ALWAYS USE ETCO ENGINEERED IGNITION TERMINALS  
WITH ETCO AUTOMOTIVE INSULATORS.



## UNCONTROLLED COPY

|  |                         |  |                            |                       |
|--|-------------------------|--|----------------------------|-----------------------|
| <br>THIRD ANGLE PROJECTION<br>TOLERANCES UNLESS OTHERWISE SPECIFIED<br>INCHES: .XX - ±.030<br>.XXX - ±.015<br>ANGLES: ±2°                          | TOOL NO.<br><b>2139</b> | Title:<br><b>Spark Plug Boot - 8mm</b> |                            |                       |
|  | <br><b>ETCO</b>         | DO NOT SCALE DWG.                      | Drawn By: <b>S.Johnson</b> | Date: <b>10/16/19</b> |
| ETCO Incorporated<br>Engineered Products<br>25 Bellows Street<br>Warwick, RI 02888<br>Phone: (401) 467-2400<br>Fax: (401) 467-9230<br>www.ETCO.com |                         | Design Control By:<br><b>ETCO</b>      | Scale:<br><b>3:2</b>       | Size<br><b>B</b>      |
|  |                         | Dwg. No.: <b>SB39 cust</b>             |                            |                       |