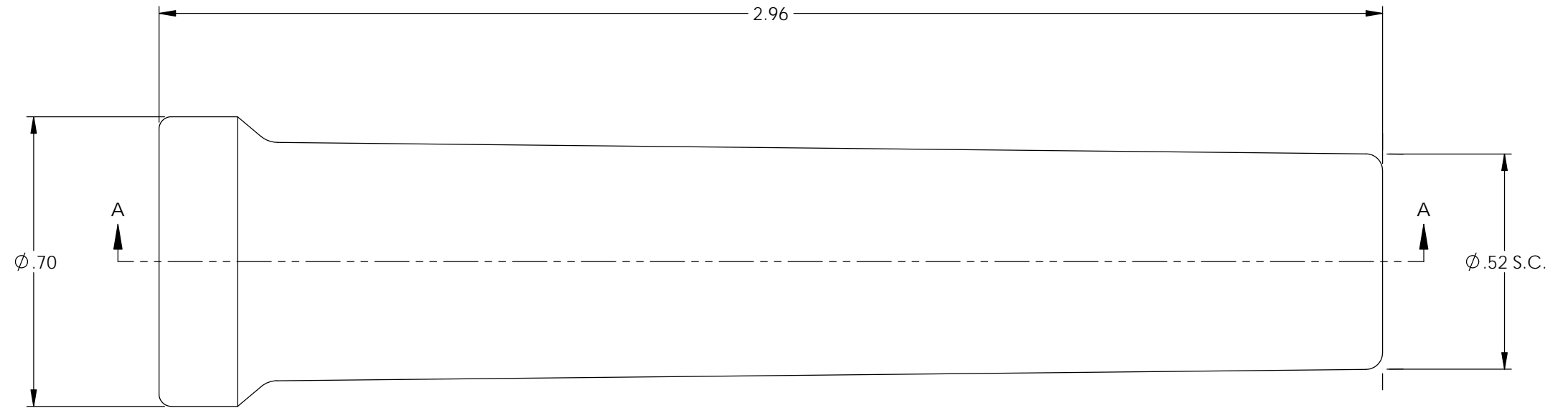


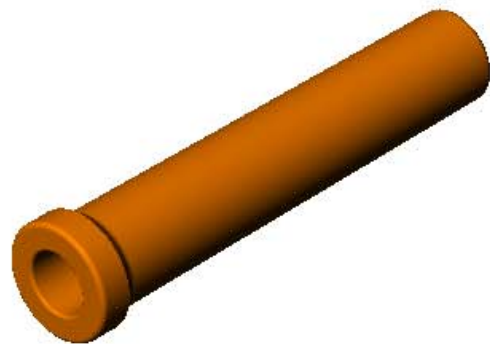
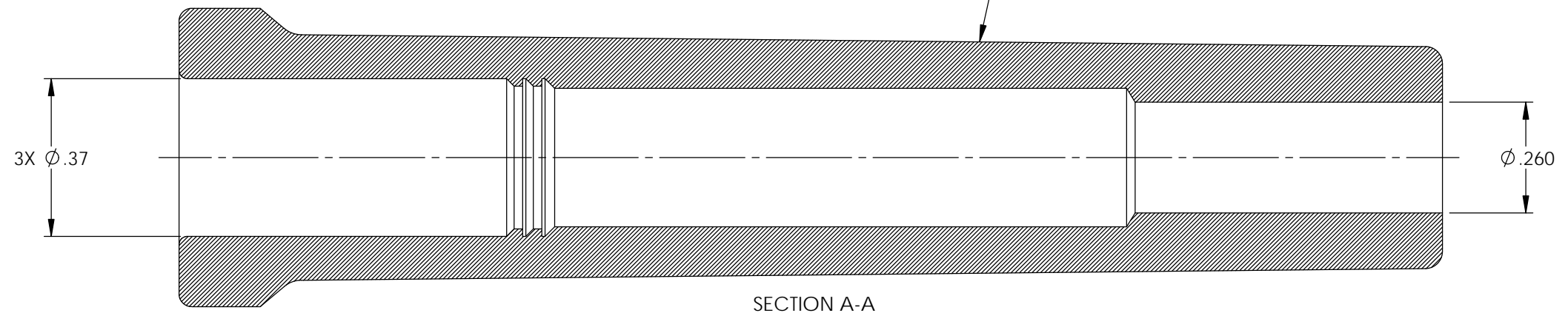
P/C	DESCRIPTION	COLOR	MATERIAL	TEMPERATURE
16003	SB4-OS	ORANGE	SILICONE	400°
16023	SB4-BS	BLACK	SILICONE	400°
16044	SB4-RS	RED	SILICONE	400°
16112	SB4-GS/HT	GREY	SILICONE	500°
16173	SB4-GS-600	GREY	SILICONE	600°

Rev.	Description of Change/ SCN#	Date
1	Redrawn in SW from ACAD Org.Eng.Dwg.Date: 12/13/89	7/02/19

NOTE:
FOR MAXIMUM PERFORMANCE AND RELIABILITY,
ALWAYS USE ETCO ENGINEERED IGNITION TERMINALS
WITH ETCO AUTOMOTIVE INSULATORS.



NOTE: DUROMETER TO BE TAKEN IN THIS AREA
USING SHORE A-2 DUROMETER.
(SEE FINISHED PARTS: MATERIAL/DUROMETER SPEC.)



UNCONTROLLED COPY

 THIRD ANGLE PROJECTION TOLERANCES UNLESS OTHERWISE SPECIFIED INCHES: .XX - ±.030 .XXX - ±.015 ANGLES: ±2°	MOLD NO. 2079	Title: Straight Boot, 8mm	
	 ETCO	DO NOT SCALE DWG. ETCO Incorporated Engineered Products 25 Bellows Street Warwick, RI 02888 Phone: (401) 467-2400 Fax: (401) 467-9230 www.ETCO.com	Drawn By: S.Johnson Design Control By: ETCO Dwg. No.: SB4 cust